

# Models

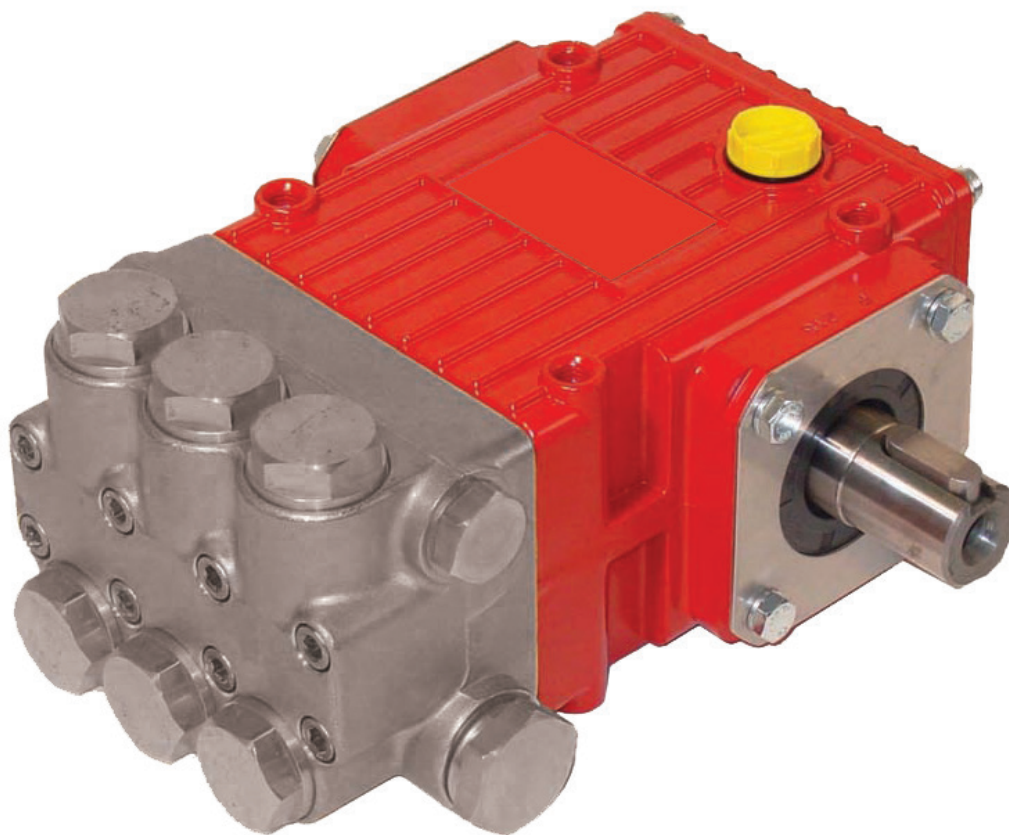
## P206-5125

## P207-5125

Triplex Ceramic  
Plunger Pump  
Operating Instructions/  
Repair and Service Manual

316 Stainless Steel with Teflon Seals and Parofluor O-Rings

---



---

**GIANT**  
Performance Under Pressure

#### Contents:

Installation Instructions:	page 2
Pump Specifications:	pages 3-5
Exploded View:	page 6
Parts List / Kits:	page 7
Torque Specifications:	page 8
Preventative Maintenance	page 8
Repair Instructions:	pages 9-10
Dimensions:	page 11
Warranty Information:	back page

Updated 05/25

# PUMP SPECIFICATIONS

## Performance

	Power Required	Pressure	Max. Speed	Max. Flow	Max. Temp.	Plunger Ø	Plunger Stroke	Weight
Model	BHP (kW)	PSI (bar)	RPM	GPM (l/min)	°F (°C)	in (mm)	in (mm)	lbs. (kg)
P206-5125	1.3 (1.0)	2500 (170)	1750	0.73 (2.8)	160 (70)	0.47 (12)	0.22 (5.5)	13.3 (6.0)
P207-5125	1.5 (1.1)	2500 (170)	1750	0.9 (3.4)	160 (70)	0.47 (12)	0.25 (6.3)	13.3 (6.0)

Performance data for intermittent operation, data for continuous operation on request.

For information on intermittent operation and calculating of the performance data, see the Giant Industries assembly instructions.

### NPSHR / Inlet pressure

Required NPSH refers to water at 70°F (20°C) at maximum permissible pump speed.  
Maximum inlet pressure: 29 PSI (2 bar)

### Level of noise emission

Emission sound pressure level:  $\leq 77$  dB(A)

### Fields of application

The fields of application of these pump types correspond to the specifications in the assembly instructions Giant Industries.

### Ambient conditions

Ambient temperature:  $41^{\circ}\text{C} < T_{\text{Amb.}} < 86^{\circ}\text{C}$   
Ambient temperature:  $5^{\circ}\text{C} < T_{\text{Amb.}} < 30^{\circ}\text{C}$

### Oil filling

- Filling quantity: **8.1 fl. oz. (0.24 l)**
- Quality: Industrial gear oil **ISO VG 220** or automotive gear oil **SAE 90 GL4** or Giant's part number **01154**
- Intervals: first oil change after **50 operating hours** then every **500 operating hours**, but at the latest after **12 months**

## Installation/ Putting into Operation

### To Turn Drive Shaft to the Other Side

Remove the valve casing.

Turn the seal adaptors (20) by 180° also so that the leakage holes are underneath.

Remount valve casing rotated 180°.

Interchange plug (5) and oil dipstick (2) with each other.

Turn crankcase cover (3) by 180°.

### Direction of pump rotation

When looking at crankshaft with valve casing mounted on left-hand side, counterclockwise direction of rotation.

When looking at crankshaft with valve casing mounted on right-hand side, clockwise direction of rotation.

### Suction line filter

Recommended mesh size 150 µm.

# Repair Instructions

## Operation

**For information, see assembly instructions Giant Industries**

## Maintenance and Servicing

For the type of threadlocker used and the required tightening torques, observe the table in the exploded view.

## Special tools required

No special tools are required for assembly.

## Suction and Discharge Valves

Screw out plugs (32) with a 12-point socket wrench. Check suction and discharge valves that are under the plugs by taking out the valves with a pair of flat tongs and then taking them apart.

Examine valve plate (28) and valve seat (27).

Cover thread of plugs (32) with a thin coat of threadlocker and tighten plugs (32) to the required torque.

Take care to reassemble in correct sequence.

## Seals and Plunger

Loosen screws (34) and remove valve casing (26) by pulling it off over the plungers.

Remove drip-return ring (25), support ring (24) grooved seal (black) (23), Sleeve (30B) and O-Ring (30C) from valve casing (26).

Remove grooved seal (23) and support ring (24) out of seal adaptor (20).

When replace, wet new seals and O-rings thinly with silicone grease or mineral oil and insert carefully.

Pay attention to the sequence and installation position of the seals.

Check O-rings (21) and replace if necessary.

Check plunger surfaces (16).

Damaged surfaces cause hard wear on seals.

Lime deposits or similar on the plunger must be removed.



Plunger surface must not be damaged in the process.

In the case of lime deposits in the pump, care must be taken that the drip-return bores in parts (25) and (26) ensure trouble-free drip-return.

If the plunger (16) is worn, the complete plunger must be changed. The ceramic plunger alone cannot be changed due to reasons of precision.

For replacement please contact manufacturer.

When assembling, tighten the screws (34) to the required torque.

**If required, supplementary assembly instructions can be requested from the manufacturer Giant Industries.**

## Spare Parts

When **ordering spare parts**, please specify **pump type, pump number, year of manufacture, and spare parts code no.**

This data can be found on the nameplate and in the spare parts list.

## Malfunctions / Remedy

For informations, see assembly instructions Giant Industries.

## Materials Used

Valve Casing: AISI 316

Plunger: Ceramic

Valves: High-Grade Stainless Steel

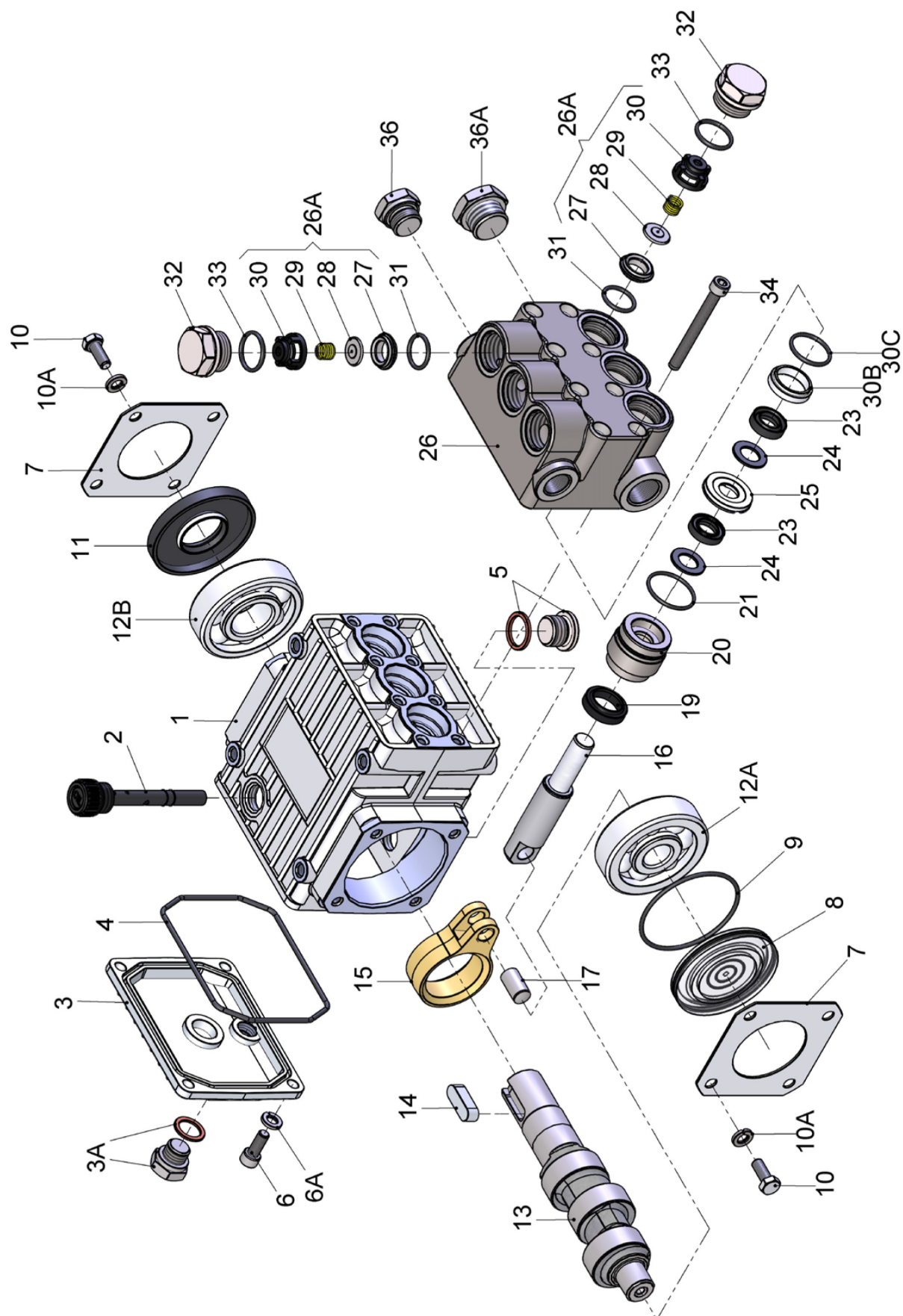
Seals: Teflon

O-Rings: Parofluor

## Paint

The pump drive is painted in RAL 7004 as standard.

# EXPLODED VIEW



# Spare Parts List

<u>ITEM</u>	<u>PART NO.</u>	<u>DESCRIPTION</u>	<u>QTY.</u>	<u>ITEM</u>	<u>PART NO.</u>	<u>DESCRIPTION</u>	<u>QTY.</u>
1	08300C	Crankcase, Anodized	1	17	08442	Wrist Pin	3
2	08301	Oil Dipstick with O-Ring	1	19	08356	Oil Seal	3
3	08302	Crankcase Cover, Short	1	20	06645-0100	Seal Case	3
3A	07190-0100	Drain Plug w/Gasket	1	21	08443-0005	O-Ring	3
4	08005	O-Ring	1	23	07391-0020	V-Sleeve	6
5	08185-0100	Oil Drain Plug with Gasket	1	24	07392	Support Ring	6
6	07188-0100	Screw, Short Cover	4	25	06646-0100	Weep Return Ring	3
6A	07223-0100	Spring Washer	4	26	06582-5000	Valve Casing	1
7	08303	Bearing Cover I	2	26A	04273	Valve Assembly (27-30)	6
8	08491	Sight Glass	1	27	07849-0100	Valve Seat	6
9	07193	O-Ring	1	28	06809	Valve Plate	6
10	07225-0100	Hexagon Screw	8	29	06816	Valve Spring	6
10A	07223-0100	Spring Washer	8	30	07907	Valve Spring Retainer	6
11	08331	Radial Shaft Seal	1	30B	05510-0100	Sleeve	3
12A	04917	Ball Bearing	1	30C	06015-0005	O-Ring	3
12B	01086	Ball Bearing	1	31	07853-0005	O-Ring, Parafluor	6
13	03026	Crankshaft (P206)	1	32	07928-0100	Valve Plug	6
13	06547	Crankshaft (P207)	1	33	07913-0005	O-Ring	6
14	06207	Fitting Key	1	34	08316-0100	Hexagon Screw	8
15	08333	Connecting rod	3	36	12138	Plug, 3/8" BSP	1
16	06641	Plunger, Complete	3	36A	07109-0400	Plug, 1/2" BSP	1

## REPAIR KITS

### Plunger Packing Kit

**Part# 09656-0025**

<u>Item</u>	<u>Part #</u>	<u>Description</u>	<u>Qty.</u>
21	08443-0005	O-Ring	3
23	07391-0020	V-Sleeve	6
24	07392	Support Ring	6

### Valve Assembly Kit

**Part# 09775**

<u>Item</u>	<u>Part #</u>	<u>Description</u>	<u>Qty.</u>
26A	04273	Valve Assembly	6
31	07853-0005	O-Ring	6
33	07913-0005	O-Ring	6

### Oil Seal Kit

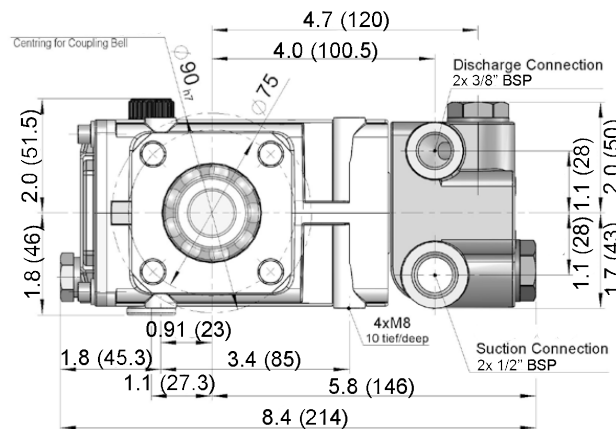
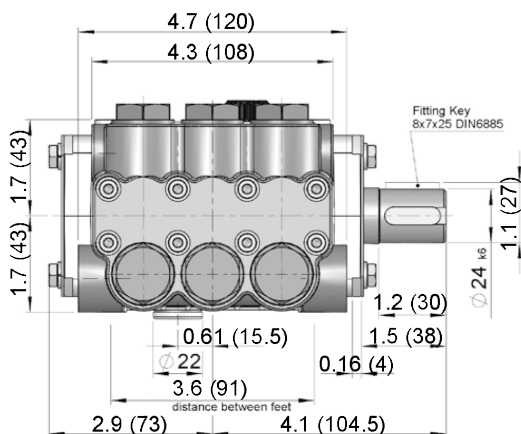
**Part# 09144**

<u>Item</u>	<u>Part #</u>	<u>Description</u>	<u>Qty.</u>
19	08356	Oil Seal	3

Lubrication Information/ Torque Specification/Tool List			
Item #	Thread	Lubrication	Torque
3A	1/4" BSP		22 ft.-lbs. (30 Nm)
5	3/8" BSP		22 ft.-lbs. (30 Nm)
6	M6		88 in.-lbs. (10 Nm)
10	M6		88 in.-lbs. (10 Nm)
32	M22 x 1.5	Pro Pack 550	55 ft.-lbs. (75 Nm)
34	M6		106 in.-lbs. (12 Nm)



## DIMENSIONS - INCHES (mm)



## GIANT INDUSTRIES LIMITED WARRANTY

Giant Industries, Inc. pumps and accessories are warranted by the manufacturer to be free from defects in workmanship and material as follows:

1. Five (5) years from the date of shipment for all pumps used in portable pressure washers with NON-SALINE, clean water applications.
2. Two (2) years from the date of shipment for Giant pumps used in car wash applications.
3. One (1) year from the date of shipment for all other Giant industrial and consumer pumps.
4. Six (6) months from the date of shipment for all rebuilt pumps
5. Ninety (90) days from the date of shipment for all Giant accessories.

This warranty is limited to repair or replacement of pumps and accessories of which the manufacturer's evaluation shows were defective at the time of shipment by the manufacturer. The following items are NOT covered or will void the warranty:

1. Defects caused by negligence or fault of the buyer or third party.
2. Normal wear and tear to standard wear parts.
3. Use of repair parts other than those manufactured or authorized by Giant.
4. Improper use of the product as a component part.
5. Changes or modifications made by the customer or third party.
6. The operation of pumps and or accessories exceeding the specifications set forth in the Operations Manuals provided by Giant Industries, Inc.

Liability under this warranty is on all non-wear parts and limited to the replacement or repair of those products returned freight prepaid to Giant Industries which are deemed to be defective due to workmanship or failure of material. A Returned Goods Authorization (R.G.A.) number and completed warranty evaluation form is required prior to the return to Giant Industries of all products under warranty consideration. Call (419)-531-4600 or fax (419)-531-6836 to obtain an R.G.A. number.

Repair or replacement of defective products as provided is the sole and exclusive remedy provided hereunder and the MANUFACTURER SHALL NOT BE LIABLE FOR FURTHER LOSS, DAMAGES, OR EXPENSES, INCLUDING INCIDENTAL AND CONSEQUENTIAL DAMAGES DIRECTLY OR INDIRECTLY ARISING FROM THE SALE OR USE OF THIS PRODUCT.

THE LIMITED WARRANTY SET FORTH HEREIN IS IN LIEU OF ALL OTHER WARRANTIES OR REPRESENTATION, EXPRESS OR IMPLIED, INCLUDING WITHOUT LIMITATION ANY WARRANTIES OR MERCHANTABILITY OR FITNESS FOR A PARTICULAR PURPOSE AND ALL SUCH WARRANTIES ARE HEREBY DISCLAIMED AND EXCLUDED BY THE MANUFACTURER.



**WARNING:** This product might contain a chemical known to the State of California to cause cancer, and birth defects or other reproductive harm.

For more information go to [www.P65Warnings.ca.gov](http://www.P65Warnings.ca.gov)

**GIANT**  
Performance Under Pressure

GIANT INDUSTRIES, INC., 900 N. Westwood Ave., Toledo, Ohio 43607  
PHONE (419) 531-4600, FAX (419) 531-6836, [www.giantpumps.com](http://www.giantpumps.com)  
© Copyright 2025 Giant Industries, Inc.