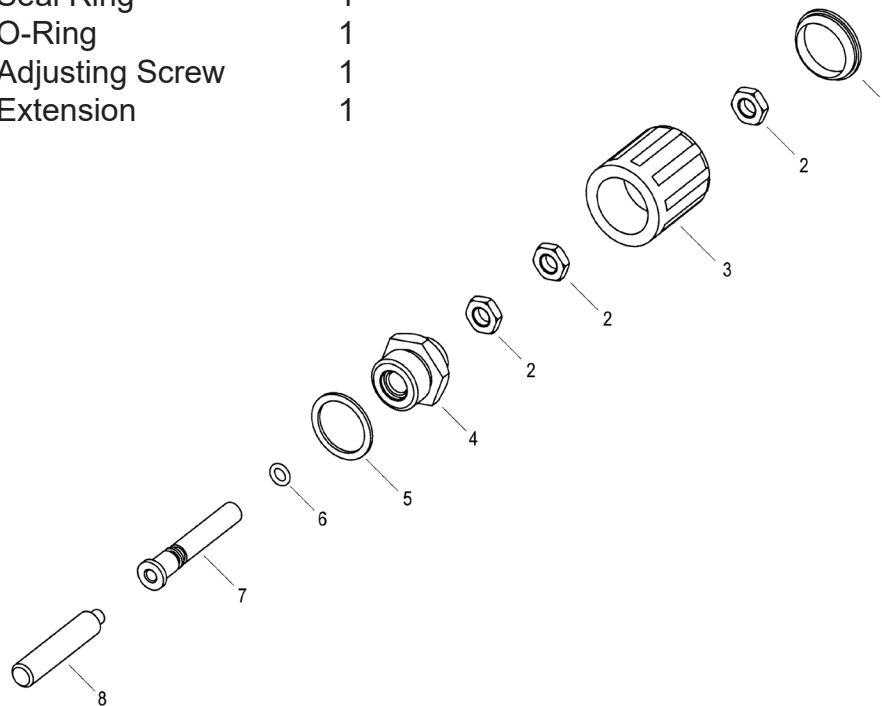


# Model 22748

## Pulsator Valve

Item	Part #	Description	Quantity
1	07046	Cover	1
2	07044	Lock Nut	3
3	07045	Handwheel	1
4	06499	Cap	1
5	08541	Seal Ring	1
6	07937	O-Ring	1
7	06498	Adjusting Screw	1
8	03617	Extension	1

For Use On Pump Models  
GP8055, GP8060, GP8065  
GP8155, GP8160, GP8165



### Installation

1. Remove plug (59) and copper ring (59A).
2. Screw pulsator valve into the open part.

### Operation

Turn clockwise to disengage inlet valve; this will induce the pulsation.  
Turn counterclockwise to re-engage inlet valve; this removes the pulsation.



**WARNING:** This product might contain a chemical known to the State of California to cause cancer, and birth defects or other reproductive harm.  
For more information go to [www.P65Warnings.ca.gov](http://www.P65Warnings.ca.gov)

**GIANT**  
Performance Under Pressure

Giant Industries, Inc.  
900 N. Westwood Ave.  
Toledo, Ohio 43607  
(419) 531-4600  
(419) 531-6836 Fax  
[www.giantpumps.com](http://www.giantpumps.com)

© Copyright 2023 Giant Industries, Inc.