

KSP3000 Spray Gun

Z5-1e

- HP - Gun complete with spray tube - 29.5 in. (750 mm) and nozzle holder for insert nozzles.
(Supplied without nozzles)

Optional Equipment:

Without lance tube 7018126

Additional Equipment:

- (a) Shoulder Support: 7009215
- (b) Half Shell Handle: 7009921
- (c) Handle (not shown): 7001071
- (d) Switch Element: 7017928



Technical Data

	<u>U.S.</u>	<u>Metric</u>
Max. Working Pressure:	43,500 PSI	3000 bar
Max. Capacity:	10.6 GPM	40 L/min
Connection:		M 26x1.5 female
Total Length:	39.4"	1000 mm
Weight:	6.6 lbs.	3.0 kg
Temperature:	max. 122 °F	max. 50 °C
Usable Nozzle Inserts:	-Insert nozzles Type 0952 (see page Z 45-1e) -Rotating nozzle PRD 3000 (see page Z 20-1e) -and nozzle heads (see page Z 20-2e) -Rotating nozzle PRD 3000 Air (see page Z 30-1e) -Orbital nozzle KOD 2500 (see page Z 40-1e/2e/3e/4e)	

Applications

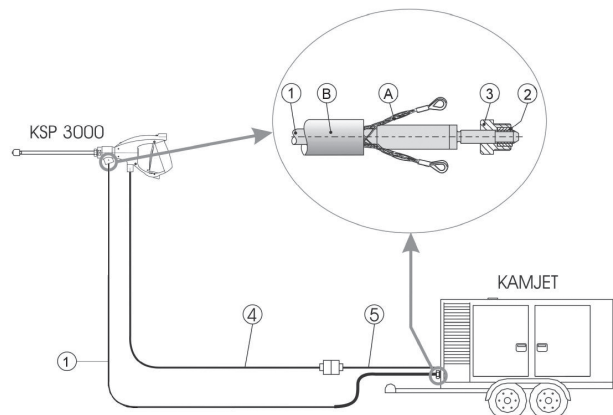
For manual surface cleaning of all types of forms and materials.



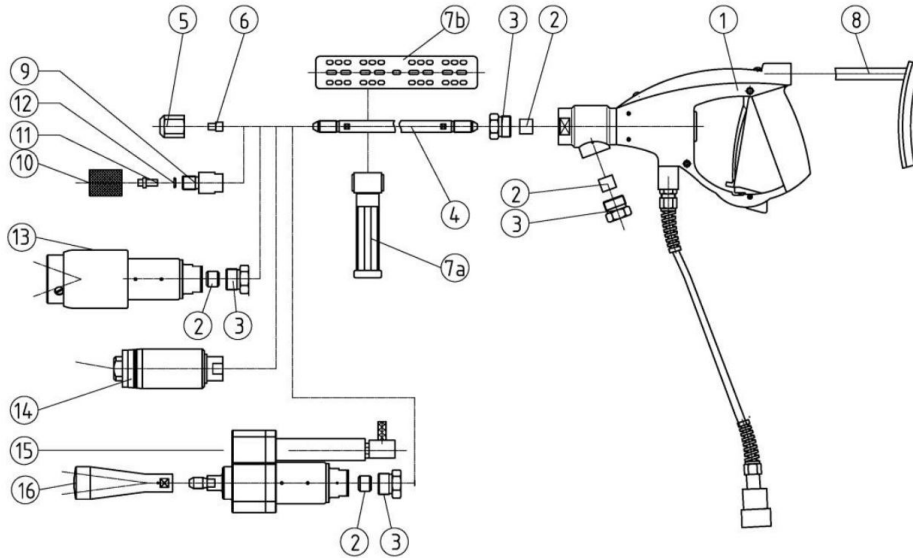
For hand-help operation of a spray gun the nozzle diameter must be selected to ensure that the reaction force in the longitudinal axis when used at the maximum operating pressure does not exceed 56.2 lbs.-force (250 N). If the reaction force is in excess of 33.7 lbs.-force (150 N) the gun must be equipped with a support.

Connection Arrangements

Item	Description	Part No.
1	High pressure hose with safety hose (Pos. A and B) Fitting: M 14x1.5 LH	High Pressure Hose Literature
2	Pressure Ring M 14 x 1,5 LH	7006365
3	Pressure Screw M 26 x 1.5	7006364
4	Remote control cable on cable reel 164 FT (50M) 262 FT (80M) 328 FT (100M)	7017923 7017922 7017924



KSP3000 Accessories and Spares



Item	Description	Part No.
	Spray gun KSP 3000 items 1 - 4c + 5	7018125
1	Gun handle with connector block	7018126
2	Pressure ring M 14 x 1.5 LH	7006365
3	Pressure screw M 26 x 1.5	7006364
4	Gun tube M 14 x1,5 LH	
a.	9.8" (250 mm)	7010480
b.	19.7" (500 mm)	7006964
c.	29.5" (750 mm)	7006963
d.	39.4" (1000 mm)	7006382
e.	59.1" (1500 mm)	7016913
f.	78.7" (2000 mm)	7006996
g.	98.4" (2500 mm)	7014917
h.	118.1" (3000 mm)	7014918
i.	157.5" (4000 mm)	7014919
5	Nozzle holder M 14 x 1,5 LH	7004818
6	Straight jet insert nozzles Type 0952	see page Z 45-1e
7a	Additional handle	7001071
7b	Half shell handle	7009921

Item	Description	Part No.
8	Shoulder Support	7009215
9	Adaptor for flat jet nozzle 21,750 PSI (1500 bar)	7005562
10	Cap nut for adaptor	7005563
11	Flat jet insert nozzle 1500 bar	see page Z 41-2e
12	O-Ring	1060382
13	Rotating nozzle PRD 3500 Nozzle heads DK1 - DK4 Straight jet threaded nozzles Form 0964 for DK1 - DK4	see page Z 20-1e
14	Orbital nozzle Type KOD	see page Z 40-1e/2e/3e/4e
15	Pneumatically driven rotating nozzle PRD 3500 Air	see page Z 30-1e
16	Various nozzle heads for PRD 3000 Air Straight jet threaded nozzles Form 0987 or 0964	see page Z 30-1e