

**KAMAT**

Since 1974



**GIANT**

Performance Under Pressure

Since 1972

Portfolio

**PLUNGER  
PUMPS**



## HIGH-PRESSURE TECHNOLOGY AND SOLUTIONS BY GIANT AND KAMAT

### Customized plunger pumps for any industrial application

We are an American distributor of German manufactured industrial crankshaft-driven plunger pumps with three or five plungers for pressures ranging from 0 PSI (0 bar) to more than 50,750 PSI (3500 bar) and up to 2000 HP (1500 kW) power input.

Being in the market since 1974, and with a worldwide distribution, we are experienced in designing and producing high-pressure technology and high-pressure solutions for our customers.

Our well known design flexibility of high-pressure plunger pumps and components allows us to cover most of the possible applications. These can be divided into three general groups: water jetting, fluid hydraulics and process technology.

### MODULAR DESIGN MAKES IT EASY TO FIND THE RIGHT PUMP

As a high-pressure system supplier KAMAT designs and manufactures plunger pumps using a modular system: Each pump type is based on a certain size gear box and is assembled from different recombined modules for various applications up to 50,750 PSI (3500 bar) and 2000 HP (1500 kW).

Our present pump portfolio gives an overview of our eleven pump types, our two pump heads and our different pump and hydraulic valves. As a first step, it introduces our customers to choose our modular system. Further details can always be discussed with our sales experts and engineers.

Even if the requested pump is not at first glance in our portfolio at first glance, we are able to find the right solution for any project! Providing individual and custom-made high-pressure solutions - that we can do!

### PUMP POWER INPUT

	Maximum Flow GPM (L/min)	Maximum Pressure PSI (bar)	Maximum Power Input HP (kW)
K100-3	1.9 (7)	30,000 (2000)	20 (15)
K4500-3	61 (232)	30,000 (2000)	60 (45)
K8000-3G	75 (283)	42,750 (2950)	100 (75)
K9000-3G	75 (283)	45,000 (3100)	121 (90)
K11000-3G	120 (454)	40,000 (2760)	147 (110)
K18000-3G	138 (522)	50,750 (3500)	241 (180)
K25000-3G	303 (1148)	46,400 (3200)	335 (250)
K45000-3G	346 (1310)	50,750 (3500)	603 (450)
K55000-3G	505 (1913)	50,750 (3500)	737 (550)
K100000-3G	920 (3482)	50,750 (3500)	1340 (1000)
K150000-3G	1235 (4677)	50,750 (3500)	2011 (1500)

### UNIQUE KAMAT FEATURES

- Made from high-quality materials sourced in Germany
- Stainless Steel as standard, special materials available
- 100% designed and manufactured in Germany
- Pump body made as a single forged component thus reducing failure probability due to a lack of seals
- Compact, low weight to power ratio, extremely small footprint
- Low NPSHr - thus preventing cavitation
- Optimized for VFD drive
- High particle tolerance - thus no high demands on the fluid's filtration up to 350 µm
- Easy to install, to service and maintain
- Low number of mostly interchangeable parts - less seals, less leaks, lower failure probability
- Simple service, without dismantling the gear box or pump head removal, no hoist needed
- Pumps are supported worldwide
- API 674 compliant
- Customized seal solutions
- >90% efficiency

### MAIN FIELDS OF APPLICATION



Hydraulics



Process Industry



Jetting



Mining



## KAMAT PLUNGER PUMPS

**K100-3**

- max. 30,000 PSI
- max. 3.0 GPM
- max. 20 HP
- 55 lbs.

max. 2000 bar @ max. 11.5 l/min, max. 15 kW, 25 kg



**K4500-3**

- max. 43,500 PSI
- max. 61 GPM
- max. 60 HP
- 430 lbs.

max. 3000 bar @ max. 232 L/min, max. 45 kW, 195 kg



**K819000-3G**

- max. 45,000 PSI
- max. 75 GPM
- max. 100/121 HP
- 562 lbs.

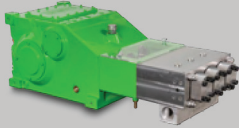
max. 3100 bar @ max. 283 l/min, max. 75/90 kW, 255 kg



**K11000-3G**

- max. 40,000 PSI
- max. 120 GPM
- max. 147 HP
- 937 lbs.

max. 2760 bar @ max. 454 l/min, max. 110 kW, 425 kg



**K18000-3G**

- max. 50,750 PSI
- max. 138 GPM
- max. 241 HP
- 970 lbs.

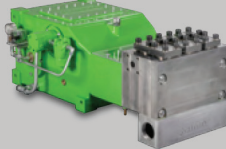
max. 3500 bar @ max. 522 l/min, max. 180 kW, 440 kg



**K25000-3G**

- max. 46,400 PSI
- max. 303 GPM
- max. 335 HP
- 2128 lbs.

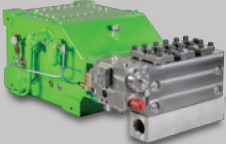
max. 3200 bar @ max. 1148 l/min, max. 250 kW, 965 kg



**K45000-3G**

- max. 50,750 PSI
- max. 346 GPM
- max. 603 HP
- 2997 lbs.

max. 3500 bar @ max. 1310 l/min, max. 450 kW, 1360 kg



**K55000-5G**

- max. 50,750 PSI
- max. 505 GPM
- max. 737 HP
- 2128 lbs.

max. 3500 bar @ max. 1913 l/min, max. 550 kW, 965 kg



**K100000-5G**

- max. 50,750 PSI
- max. 920 GPM
- max. 1340 HP
- 8046 lbs.

max. 3500 bar @ max. 3482 l/min, max. 1000 kW, 3650 kg



**K150000-5G**

- max. 50,750 PSI
- max. 1235 GPM
- max. 2011 HP
- 16,535 lbs.

max. 3500 bar @ max. 4677 l/min, max. 1500 kW, 7500 kg



## HYDRAULIC VALVES

**PRESSURE REGULATORS**

- max. 58,000 PSI (max. 4000 bar)
- max. 1215 GPM (max. 4600 l/min)



**UNLOADER VALVES**

- max. 10,150 PSI (max. 700 bar)
- max. 951 GPM (max. 3600 l/min)




**CONTROL VALVES**

- max. 50,750 PSI (max. 3500 bar)
- max. 63.4 GPM (max. 240 l/min)



**SAFETY VALVES**

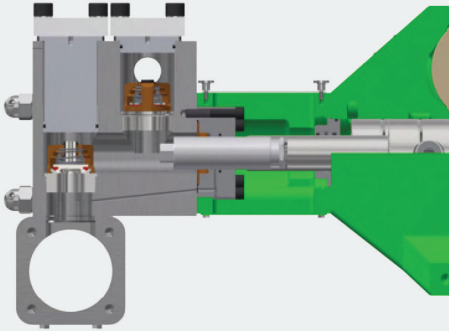
- max. 58,000 PSI (max. 4000 bar)
- max. 515 GPM (max. 1950 l/min)



**PUMP HEADS**

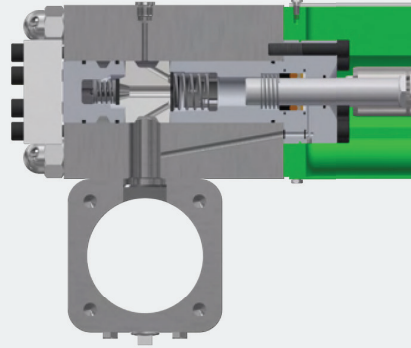
**M-HEAD**

- Pressure Range: 0 - 15,000 PSI  
(0 - 1000 bar)
- Filtration < 350 µm
- Valve Design Vertical
- Plate and Soft Valves



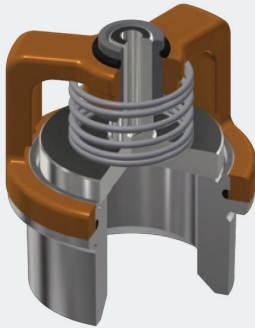
**A-HEAD**

- Pressure Range: 0 - 50,750 PSI  
(0 - 3500 bar)
- Filtration < 100 µm
- Valve Design Horizontal
- Load Cycle Free

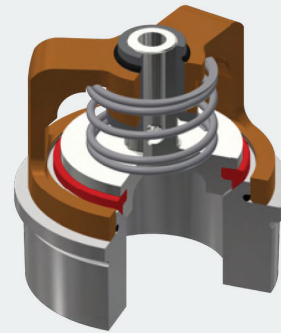


**PUMP HEAD VALVES**

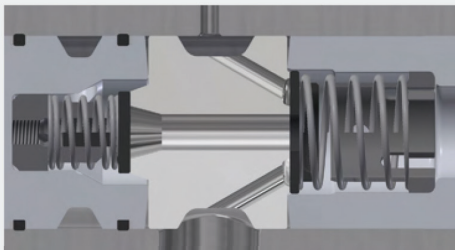
**M VALVE PLATE**

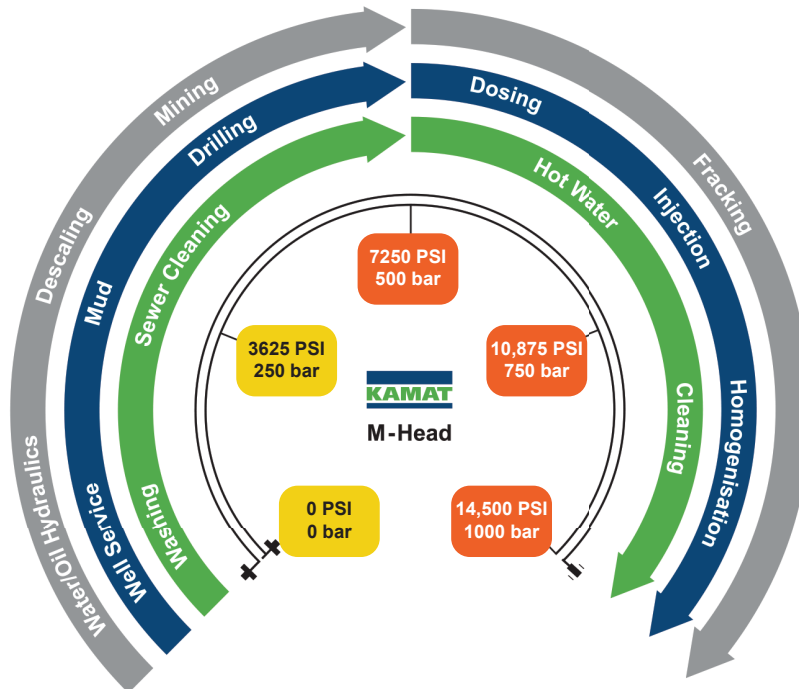


**M VALVE SOFT**

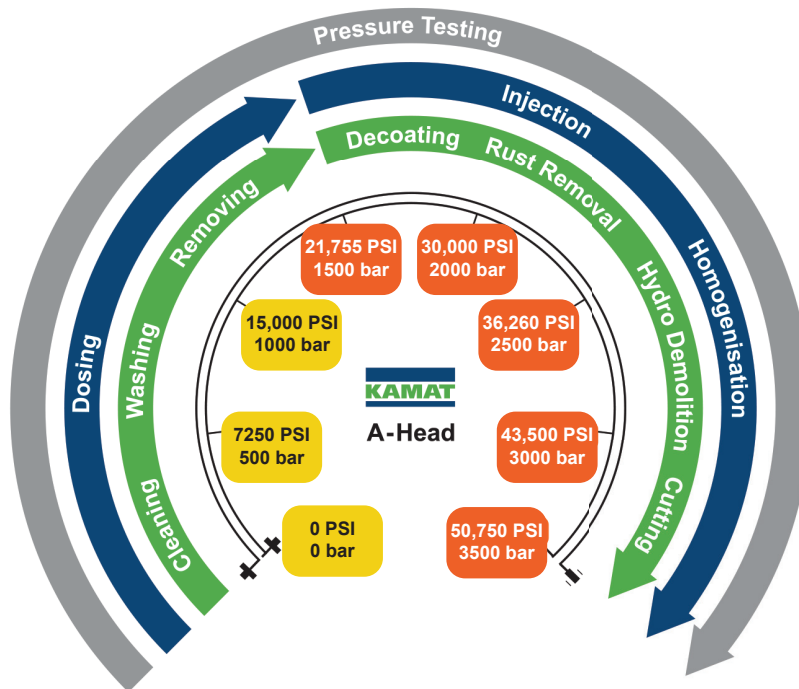


**A VALVE**





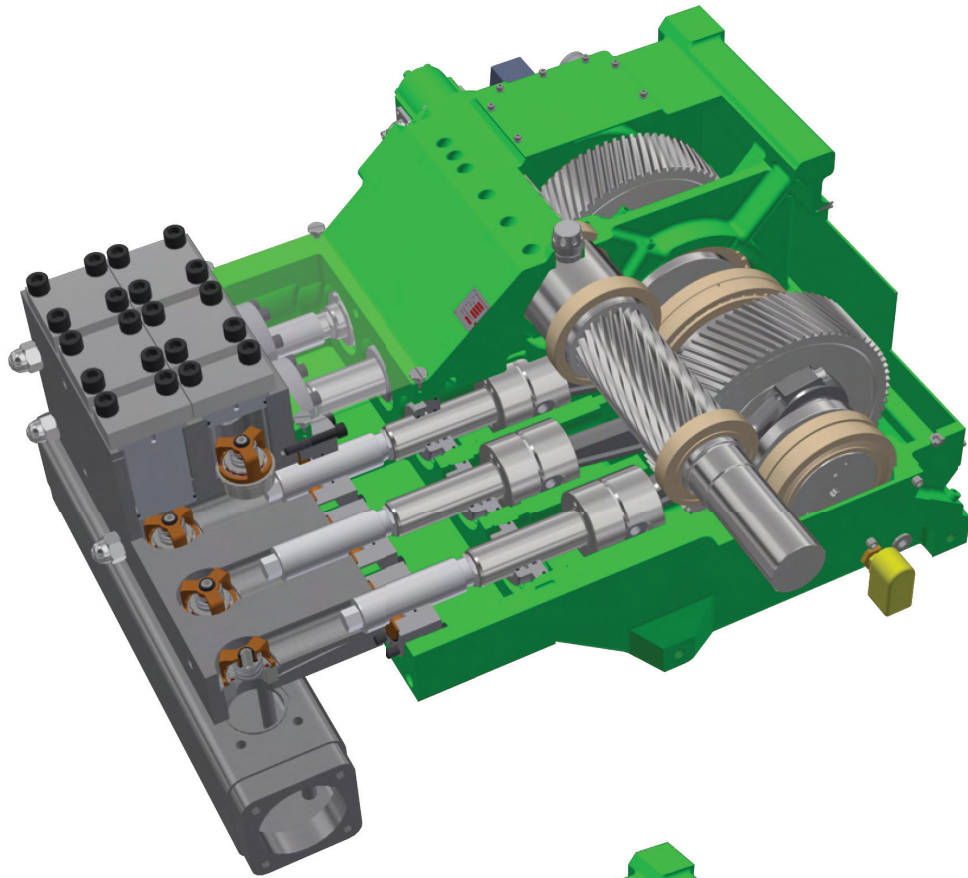
M2 M Jetting Process Industry Hydraulics



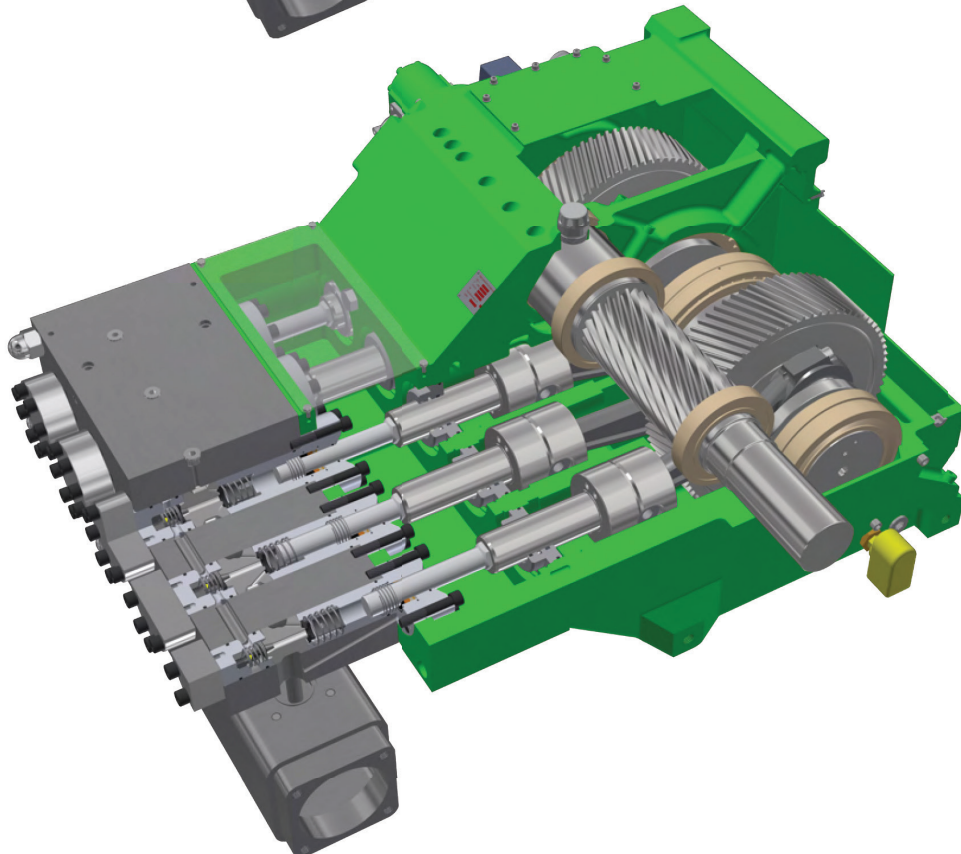
A2 A1 Jetting Process Industry Hydraulics

**INSIDE VIEWS OF OUR PUMPS**

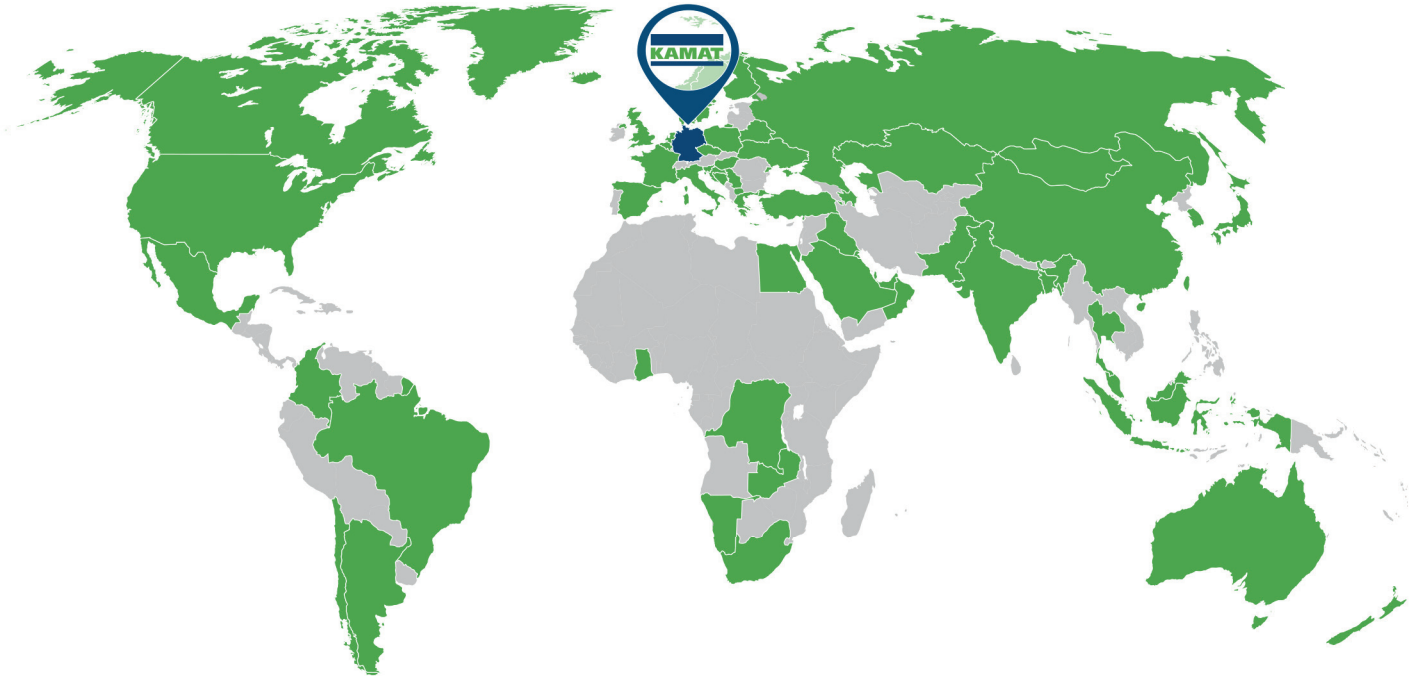
**M-Head**



**A-Head**



# KAMAT WORLDWIDE



**EUROPE:** Belarus | Belgium | Bosnia and Herzegovina | Croatia | Czech Republic | Denmark | Finland | France | Germany | Great Britain | Greece | Hungary | Iceland | Italy | Netherlands | North Macedonia | Norway | Poland | Serbia | Slovenia | Spain | Sweden | Ukraine  
**ASIA:** Azerbaijan | China | India | Indonesia | Israel | Japan | Kazakhstan | Malaysia | Mongolia | Russia | South Korea | Taiwan | Turkey | Thailand | United Arab Emirates  
**AFRICA:** Dem. Rep. Congo | Egypt | Ghana | Namibia | South Africa | Zambia  
**NORTH AMERICA:** Canada | Mexico | United States of America  
**SOUTH AMERICA:** Argentina | Brazil | Colombia | Chile  
**OCEANIA:** Australia | New Zealand

Official partner:

**GIANT**  
Performance Under Pressure

Giant Industries, Inc.  
900 N. Westwood Ave  
Toledo, OH 43607  
(419)531-4600 -phone  
(419)531-6836-fax  
www.giantpumps.com  
©2021 Giant Industries, Inc.



+49 2302 8903 0  
info@KAMAT.de  
www.KAMAT.de/en

