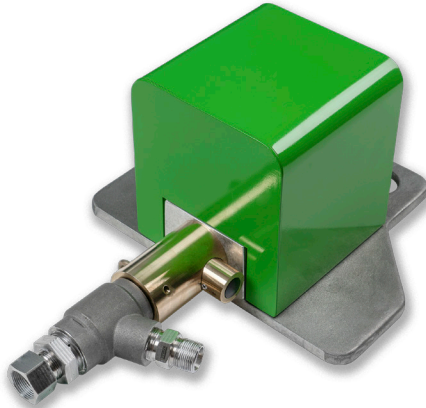


## Foot Valves and Electric Foot Switch

mechanical and electrical

Z85-1e



### Technical Data - Foot Valve 1500

Part Number:	7032719	<b>Additional equipment</b>	
Maximum working pressure:	21,755 PSI (1500 bar)	Hose connection adaptor M 22 x 1.5:	7009212
Nominal diameter:	DN 8	Hose connection adaptor M 24 x 1.5:	7009213
Pressure connection:	M26 x 1.5 IG	Initiator for remote control:	7017928
Design:	mechanical		

### Technical Data - Dump Foot Valve 1500

Part Number:	7032733	<b>Additional equipment</b>	
Maximum working pressure:	43,500 PSI (3000 bar)	Initiator for remote control:	7017928
Nominal diameter:	DN 6		
Pressure connection:	M24 x 1.5 DKO		
Design:	mechanical		

### Technical Data - Dump Foot Valve 3000

Part Number:	7032732	<b>Additional equipment</b>	
Maximum working pressure:	43,500 PSI (3000 bar)	Initiator for remote control:	7017928
Nominal diameter:	DN 6		
Pressure connection:	autoclave HP-Fitting Pressure ring M 14 x 1.5 LH Pressure screw M 26 x 1.5		
Design:	mechanical		

### Technical Data - Foot Switch

Part Number:	7017920
Design:	electrical complete with 2 m cable and plug 6-pole



**WARNING:** This product might contain a chemical known to the State of California to cause cancer, and birth defects or other reproductive harm.  
For more information go to [www.P65Warnings.ca.gov](http://www.P65Warnings.ca.gov)