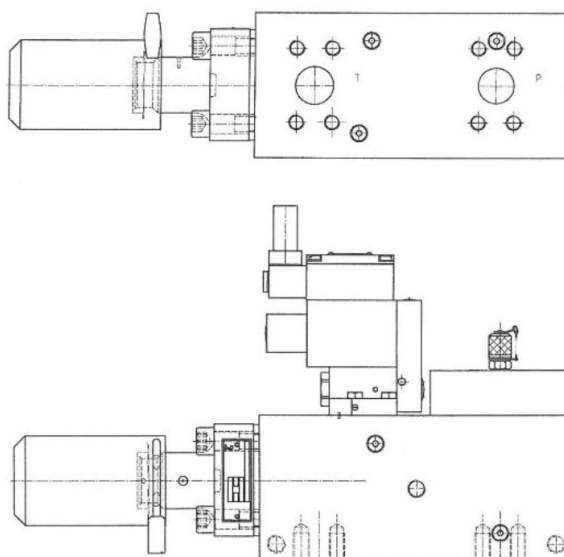
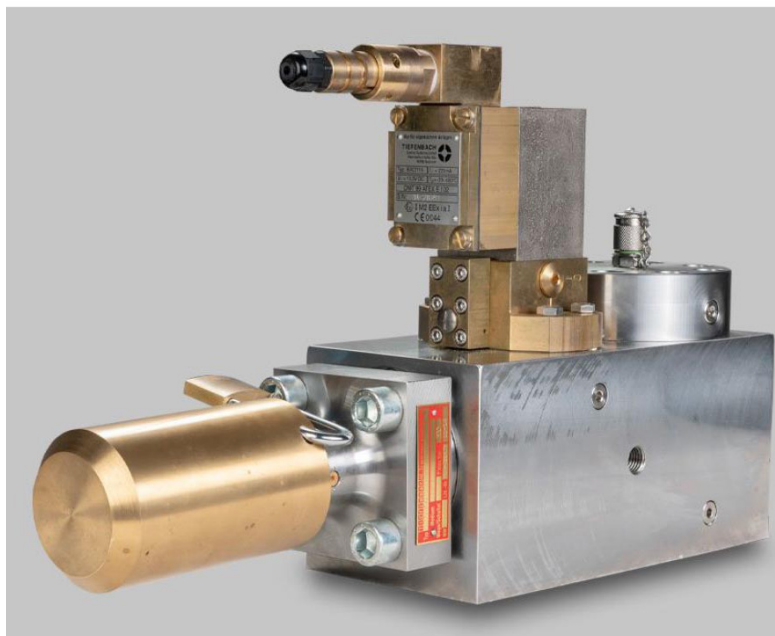
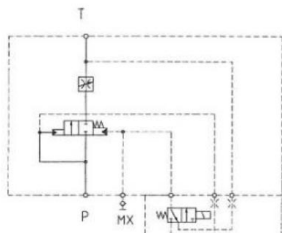


Dump Valves - electrical

P65-6

Electro-hydraulic 2/2 way valve with manually adjustable throttle for pressure release such as hose-lines in-between pump system and longwall. The internal parts are identical to the parts used in the KAMAT unloading valve. The manual and lockable throttle valve is used to adjust the speed of the pressure release.



Symbol			
Part Number	7024516	7025875	7029598
DN / ID	32	50	32
max. pressure - PSI (bar)	6090 (420)	6090 (420)	6090 (420)
Connection P	S.A.E. 1-1/4" 6000 PSI	S.A.E. 2" 6000 PSI	S.A.E. 1-1/4" 6000 PSI
Connection T	S.A.E. 1-1/4" 6000 PSI	S.A.E. 2-1/2" 6000 PSI	S.A.E. 1-1/4" 6000 PSI
Function	electric 12V DC	electric 12V DC	electric 24V DC
Dimension - in.(mm)	9.8x19.7x5.1 (250x500x130)		9.8x19.7x5.1 (250x500x130)
Weight - lbs.(kg)	101.4 (46)		101.4 (46)