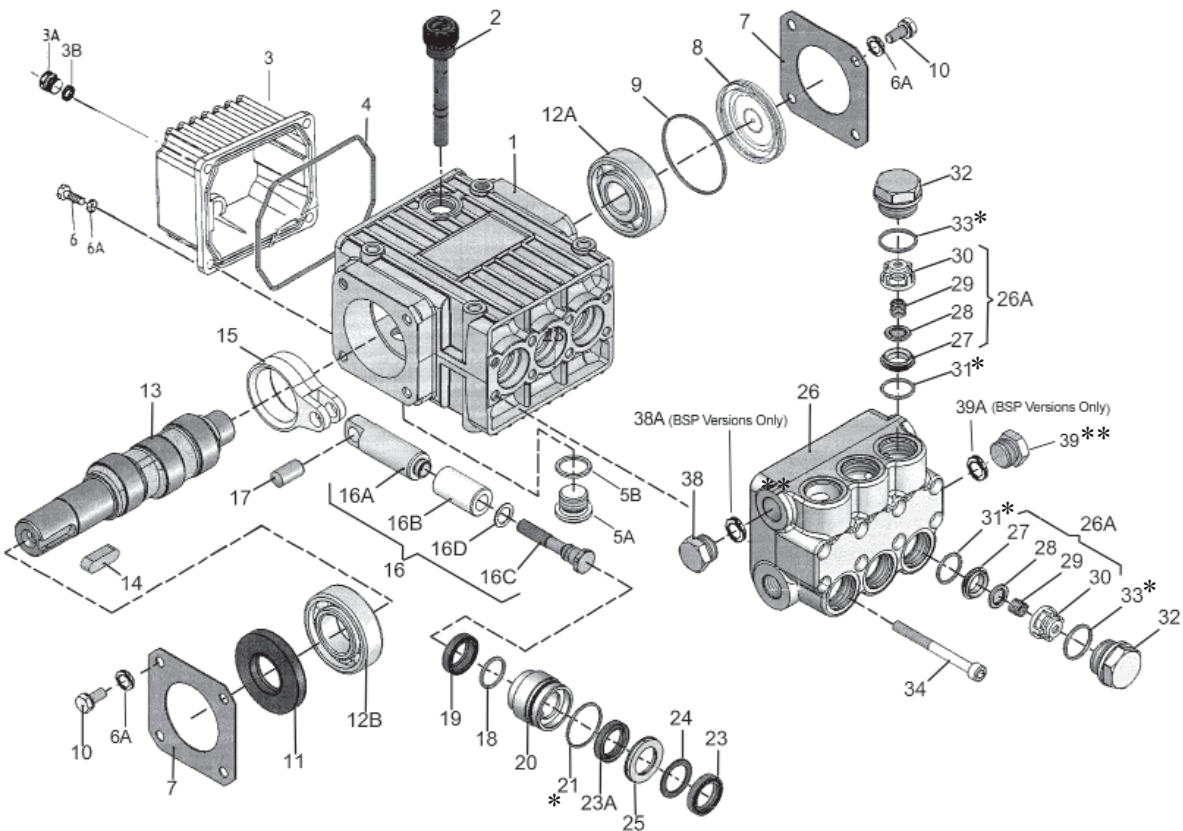


## CP200 Series Pumps - Exploded View



### CP200 Series Pumps Spare Parts

CP217 = A				CP218 = B				CP220 = C				CP230 = D			
Item	Part No.	Description	Qty.	Item	Part No.	Description	Qty.	Item	Part No.	Description	Qty.	Item	Part No.	Description	Qty.
1	CP08300	Crankcase (A, C, D)	1	16B	CP08455	Plunger Pipe	3								
1	CP08300C	Crankcase (B)	1	16C	CP08456	Tension Screw	3								
2	CP06773	Oil Dipstick	1	16D	CP07676	Copper Gasket	3								
3	CP08302-L	Crankcase Cover	1	17	CP08442	Wrist Pin	3								
3A	CP07190	Drain Plug & Gasket	1	18	CP07770-0003	O-Ring, EPDM	3								
3B	CP13262A	Gasket	1	19	CP08356	Oil Seal	3								
4	CP08005	O-Ring	1	20	CP08444	Seal Case	3								
5A	CP06273	Oil Drain Plug	1	21*	CP06815	O-Ring	3								
5B	CP08192	Gasket	1	23	CP08087	V-Sleeve	3								
6	CP07188	Screw, Crankcase Cover	4	23A	CP08087-0020	V-Sleeve, Teflon	3								
6A	CP01176-2	Spring Washer	12	24	CP07904	Pressure Ring	3								
7	CP08303	Bearing Cover I	2	25	CP08445	Weep Return Ring	3								
8	CP08490	Sight Glass (A, C, D)	1	26	CP06582	Valve Casing (BSP versions)	1								
8	CP08491	Sight Glass (B)	1	26	CP06582-NPT	Valve Casing (NPT versions)	1								
9	CP08492	O-Ring (A, C, D)	1	26A	CP04273	Valve Assembly (27-30)	6								
9	CP07193	O-Ring (B)	1	27	CP07849-0100	Valve Seat	6								
10	CP07225	Screw	8	28	CP06809	Valve Plate	6								
11	CP01166	Radial Shaft Seal (A, C, D)	1	29	CP06816	Valve Spring	6								
11	CP08331	Radial Shaft Seal (B)	1	30	CP07907	Valve Spring Retainer	6								
12A	CP08020	Ball Bearing (A, C, D)	1	31*	CP06817	O-Ring	6								
12A	CP04917	Ball Bearing (B)	1	32	CP07928	Valve Plug	6								
12B	CP01020	Ball Bearing (A, C, D)	1	33*	CP06818	O-Ring	6								
12B	CP01086	Ball Bearing (B)	1	34	CP08316	Hex Head Cap Screw	8								
13	CP08465	Crankshaft (A)	1	38**	CP13338	Plug, 3/8" BSP Versions	1								
13	CP04920	Crankshaft (B)	1	38	PF-5406-08HP-P	Plug, 3/8" NPT Versions	1								
13	CP08467	Crankshaft (C)	1	38A	CP08486	Copper Crush Washer, BSP Versions	1								
13	CP06694	Crankshaft (D)	1	39	CP07109	Plug, 1/2" BSP Versions	1								
14	CP06207	Fitting Key	1	39	PF-5406-08HP-B	Plug, 1/2" NPT Versions	1								
15	CP08333	Connecting Rod	3	39A	CP07661	Seal, BSP Versions	1								
16	CP08469	Plunger, Complete	3												
16A	CP08468	Plunger Base	3												

\* These EPDM (Buna) o-rings must not come into contact with mineral oil or mineral grease. Use silicone grease only.

\*\* BSP Version only

## CP200 Series Pumps Repair Kits

### Valve Assembly Kit

#### Part # CP09556-0123

Item #	Part #	Description	Qty.
26A	CP04273	Valve Assembly, Complete	6
31	CP06817	O-Ring	6
33	CP06818	O-Ring	6

### Oil Seal Kit - Part # CP09144

Item #	Part #	Description	Qty.
19	CP08356	Oil Seal	3

### Plunger Packing Kit

#### Part # CP09554-0123

Item #	Part #	Description	Qty.
21	CP06815	O-Ring	3
23	CP08087	V-Sleeve, weep	3
23A	CP08087-0020	V-Sleeve, brown	3
24	CP07904	Pressure Ring	3

## CP200 Series Pumps Torque Specifications

Position	Item #	Description	Torque Amount
3A	CP07190	Drain Plug and Gasket	22 ft.-lbs. (30 Nm)
5A	CP06273	Oil Drain Plug w/Gasket	22 ft.-lbs. (30 Nm)
6	CP07188	Screw, Crankcase Cover	88 in.-lbs. (10 Nm)
10	CP07225	Screw w/Lock Washer	88 in.-lbs. (10 Nm)
16C	CP08456	Tension Screw, Plunger	199 in.-lbs. (22.5 Nm)
32	CP07928	Valve Plug	55 ft.-lbs. (75 Nm)
34	CP08316	Hex Head Cap Screw, Valve Casing	105 in.-lbs. (12 Nm)

### Preventative Maintenance Check List & Recommended Spare Parts List

Check	Daily	Weekly	50 Hrs.	Every 500 Hrs	Every 1500 Hrs	Every 3000 Hrs
Oil Level/Quality	X					
Oil Leaks	X					
Water Leaks	X					
Belts, Pulley		X				
Plumbing		X				
Recommended Spare Parts						
Oil Change See page 2			X	X		
Plunger Packing Kit (1 kit/pump) See above					X	
Oil Seal Kit (1 kit/pump) See above					X	
Valve Repair Kit (1 kit/pump) See above						X