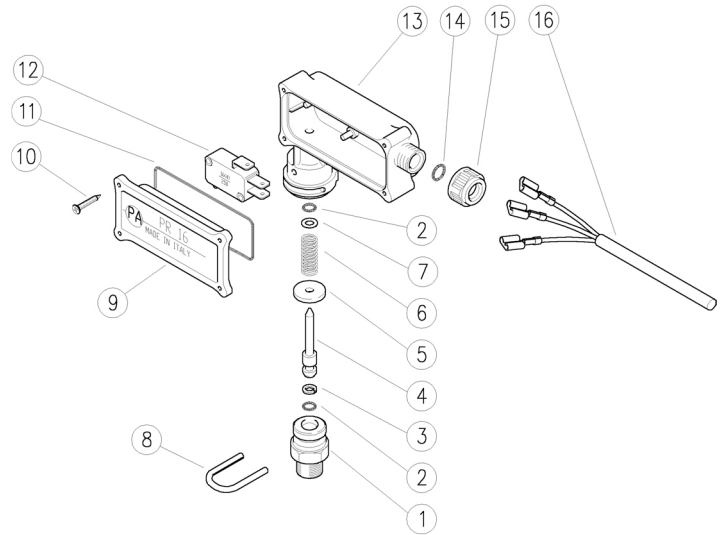


Model 23178-4000

Pressure Switch

Parts List

Item	Part#	Description	Qty.
1	03535	Connection	1
2*	14044	O-Ring	2
3*	14039	Backup Ring	1
4	14086	Piston	1
5	14041	Washer	1
6	14042	Spring	1
7	08619	Washer	1
8	14045	U-Bolt	1
9	14047	Lid	1
10	04098	Screw	4
11*	14088	O-Ring	1
12	08795	Microswitch	1
13	14089	Casing	1
14*	14090	O-Ring	2
15	14091	Locknut for Cable Gland, Red	1
16	04103	Cable	1
*	09541	Repair Kit	



Operating Specifications:

The pressure switch signals the surpass of a pre-set pressure, through a piston, which operates a switch lever.

Maximum Pressure: 3600 PSI (250 Bar)

Permissible Pressure: 4000 PSI (280 Bar)

Actuation Pressure: 360 PSI (25 Bar)

Maximum Temperature: 195 °F (90 °C)*

Inlet Port: 3/8" MNPT

Weight: 0.6 lbs. (260 grams)

*The pressure switch is designed for a continuous use at a water temperature of 140°F (60°C), and can only withstand the maximum temperature for short periods of time.

Electrical Specifications:

Max. Rated Voltage: 250V

Breaking Switch: 16 (A) - resistive load
6 (A) - inductive load

Cable Length: 1200 mm
Electric Wire - 3 x 1 mm

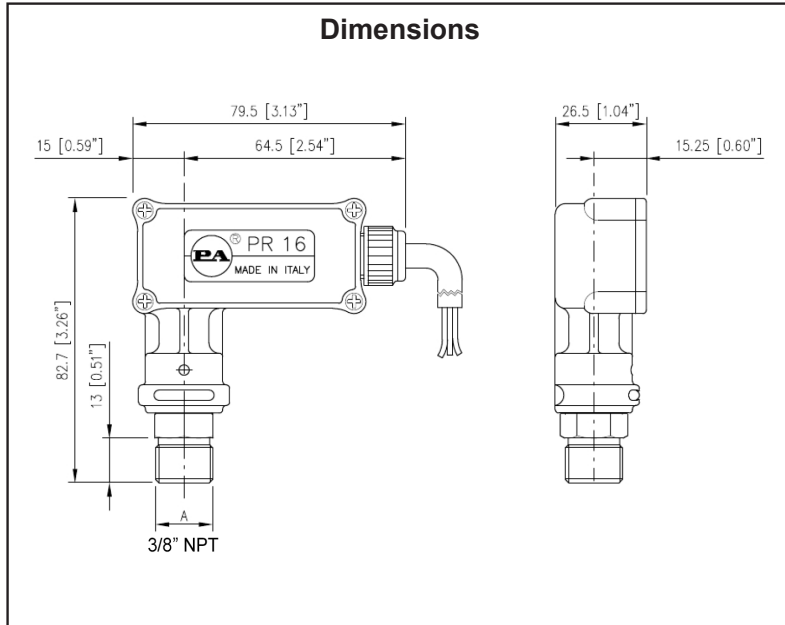
Max. Amperage Cable: 10 A

Environment Temp.: 167°F (75°C)

INSTALLATION & OPERATING INSTRUCTIONS

Selection

Select the pressure switch suitable for the rated system pressure and on/off operations. Make sure that the operating current valve is below the maximum rated valve. The pressure of the machine should not exceed the permissible pressure rate imprinted on the pressure switch. The switch fixed setting is distinguished by three different colors of the nut. Black > 580 PSI - Red > 360 PSI.



Installation

When installed on hot water cleaners, this accessory must be installed before the boiler. This accessory must be installed on a finished pressure washer. **Electrical installation is to be carried out by skilled personnel.**

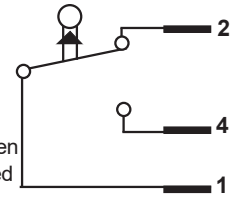
WARNING! - Always provide this electric device with correct grounding.

Wiring diagram

- 1) Red wire - 2) Blue wire
- 4) Brown wire

Electrical Connection

- N.O. Red + Brown - Normally Open
N.C. Red + Blue - Normally Closed



Maintenance

STANDARD: every 400 working hours (circa 10,000 cycles), check and lubricate the seals with water resistant grease.

SPECIAL: every 800 working hours (circa 20,000 cycles), control the wear of the seals and internal parts. If necessary, replace with original Giant Industry parts, taking care during installation to lubricate with water resistant grease.

For correct assembly, follow the exploded view.

Maintenance is to be carried out by skilled personnel only. The manufacturer is not responsible for damage resulting from incorrect fitting and maintenance.

Troubleshooting

Problems	Probable Causes	Solutions
The pressure switch does not open	Faulty or missing electrical connection Broken microlever Broken spring Broken microcontacts Jammed piston	Check and/or replace Replace microswitch Replace Replace microswitch Check and/or clean
Fluid in the casing	Damaged piston seals Damaged nut seals	Check and/or replace Check and/or replace



WARNING: This product might contain a chemical known to the State of California to cause cancer, and birth defects or other reproductive harm.
For more information go to www.P65Warnings.ca.gov

GIANT
Performance Under Pressure

Giant Industries, Inc.
900 N. Westwood Ave.
Toledo, Ohio 43607
419-531-4600
FAX 419-531-6836
www.giantpumps.com