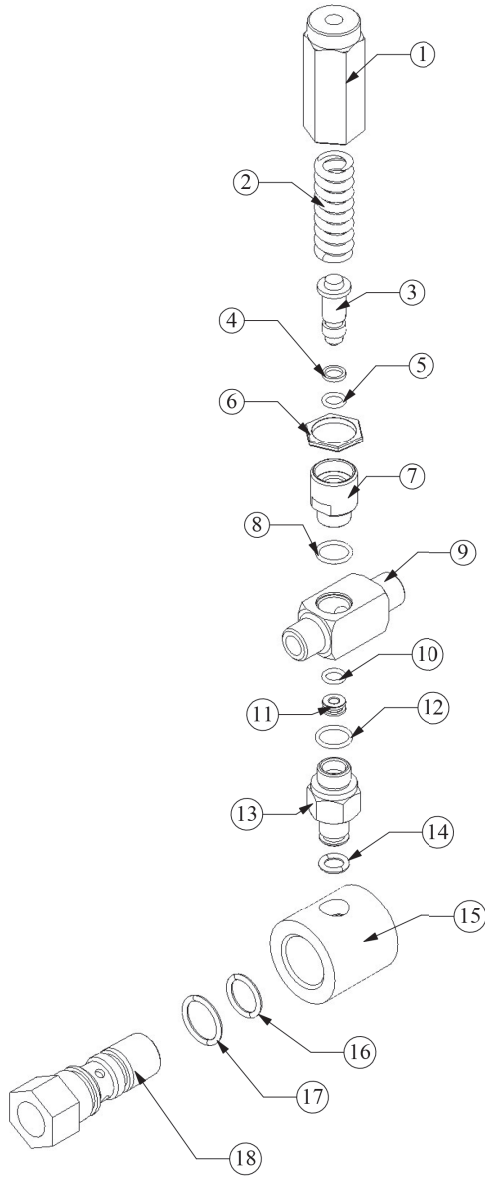


Model 22240

Direct Mount Regulator with Bypass Connection



Item	Part#	Description	Qty
1	05674	Adjusting Cap	1
2	05683	Spring	1
3	04924	Piston	1
4	05684	Backup Ring	1
5	05685	Quad Ring	1
6	05681	Locknut	1
7	05675	Stem	1
8	12007	O-Ring	1
9	03347	Body	1
10	07023	O-Ring	1
11	05679	Seat	1
12	12007	O-Ring	1
13	03346	Bypass Fitting	1
14	03356	O-Ring	1
15	03349	Bypass Fitting	1
16	03357	O-Ring	1
17	03355	O-Ring	1
18	03348	Inlet Fitting	1

Operating Specifications

	U.S.	Metric
Flow	10 GPM.....	40 L/min
Pressure Range:.....	150-2000 PSI.....	10-140 Bar
Max. Temperature:.....	160 °F	70 °C
Inlet Port:.....		1/2" FNPT
Outlet Port:.....		3/8" FNPT
Bypass:.....		Internal
Weight:	1.4 lbs.	0.64 kg
Materials:.....	Brass, Stainless Steel, Buna-N Seals, Delrin	

Installation and Operation Instructions

- 1) The valve should be tension-free; therefore, loosen adjusting cap (1) as far as possible.
- 2) While the gun is open, turn the adjusting cap (1) in a clockwise motion until desired pressure is reached.

Important! If the nozzle orifice is too small to allow all the fluid to run through the hole after the required operating pressure is reacted, on no account is the valve to be adjusted higher than the maximum operating pressure of the pump.

Disassembly and Reassembly of the 22240 Series Regulator

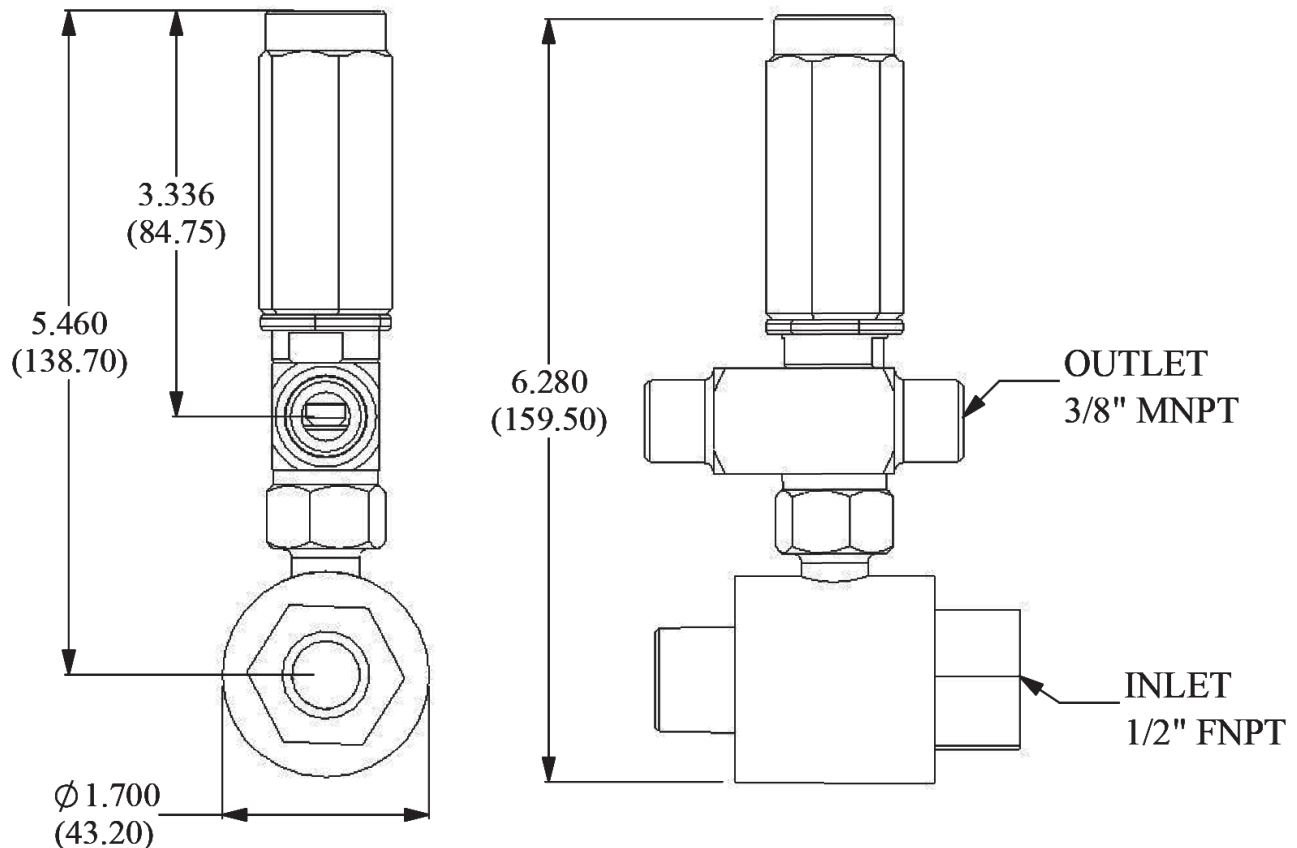
1. Remove the adjusting cap (1) and spring (2).
2. Pull piston (3), backup ring (4) and quad ring (5) and O-ring (8) from the stem (7). Inspect parts and replace as necessary.
3. Remove inlet fitting (18) from the bypass fitting (15) and inspect O-rings (16 and 17). If necessary, replace O-rings.
4. Remove bypass fitting (13) from bypass fitting. Inspect sealing area of seat (11); if damaged, replace seat. Inspect O-rings 10, 12 and 14 and replace as necessary.
5. Making sure that grease is applied to elastomers, re-assemble all parts.

Note: Lightly grease all parts before reinstalling.



WARNING: This product might contain a chemical known to the State of California to cause cancer, and birth defects or other reproductive harm. For more information go to www.P65Warnings.ca.gov

Dimensions-inches (mm)



GIANT
Performance Under Pressure

Giant Industries, Inc.
900 N. Westwood Ave.
Toledo, Ohio 43607
PHONE: 419-531-4600
FAX: 419-531-6836
www.giantpumps.com