

# Models

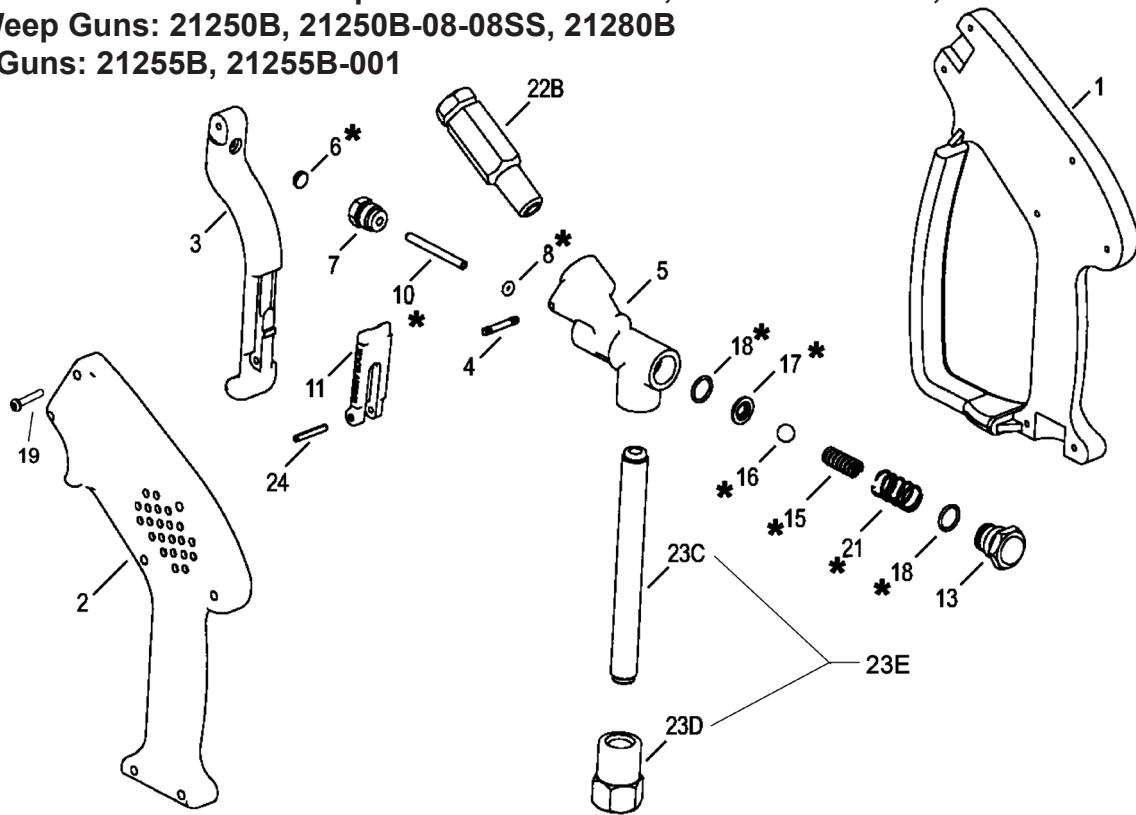
# Shut-Off Guns

**21250-4000, 21250B, 21250B-08-08SS, 21250B-4000-CR,  
21255-4000, 21255B, 21255B-001, 21280B**

**Corrosion Resistant Non-Weep Guns: 21250-4000, 21250B-4000-CR, 21255-4000**

**Non-Weep Guns: 21250B, 21250B-08-08SS, 21280B**

**Weep Guns: 21255B, 21255B-001**



## Parts List

(A) 21250-4000 (B) 21250B (C) 21250B-08-08SS (D) 21250B-4000-CR  
(E) 21255-4000 (F) 21255B (G) 21255B-001 (H) 21280B

Item #	Part #	Description	Qty	Item #	Part #	Description	Qty
1	21271B*	Housing, Right Half	1	22B	21256A-08	Discharge Tube/Fitting Assy. (C Only)	1
2	21272B*	Housing, Left Half	1	23C	21331C	Inlet Tube (B, C, F, G, H)	1
3	21273..	Trigger (A, B, C, D)	1	23D	21244C	Inlet Fitting (B, F, G, H)	1
3	21012*	Trigger (E, F, G, H)	1	23D	21244-08-0400	Inlet Fitting (C Only)	1
4	21214	Pin	1	23E	21257-0400	Inlet Tube and Fitting (A, D, E only)	1
5	21430	Valve Body	1	24	21236..*	Lock Pin	1
6	21213..*	Cam, Trigger	1			*Sold only as a set with screws (19)	
7	21211	Guide Sleeve	1			..Sold as an assembly - part number 21001	
8	21210	O-ring	1			*Sold as an assembly - part number 21001B	
10	21209	Control Bolt	1				
11	21274..	Lock (A, B, C, D)	1				
11	21013*	Lock (E, F, G, H)	1				
13	21432	Cap (A, D, E)	1				
13	21432C	Cap (B, C, F, G, H)	1				
15	21431	Valve Spring	1				
16	21205	Valve Ball (A, B, C, E, F, G)	1				
16	21357	Valve Ball (D)	1				
16	21812	Valve Ball (H)	1				
17	21218	Valve Seat (A, B, C, D, H)	1				
17	21237	Valve Seat (E, F, G)	1				
18	21217	O-ring	2				
19	21254	Self Tapping Screw	7				
*21	21251	Spring	1				
22B	21256A	Discharge Tube/Fitting Assy. (except C)	1				

**Kits (all kits include items 8, 10, 15-18 and 21)**

Kit # 21227:.....21250B

21250-4000

21250-08-08SS

Kit # 21227-CR: .....21250B-4000-CR

Kit # 21240:.....21255B

21255B-001

21255-4000

Kit # 21289:.....21280B

# INSTALLATION & OPERATING INSTRUCTIONS

## OPERATING CONDITIONS

	(U.S.)	(Metric)
Max Flow: .....	10 GPM .....	(37.8 l/min)
Max Pressure (except 21280B):.....	5000 PSI .....	(345 bar)
Max Pressure (21280B only):.....	1500 PSI .....	(103 bar)
Max Temp: .....	300° F .....	(149° C)
Inlet Port (except 21250B-08-08SS): .....		3/8" FNPT
Inlet Port (21250B-08-08SS only): .....		1/2" FNPT
Outlet Port (except 21250B-08-08SS): .....		1/4" FNPT
Outlet Port (21250B-08-08SS only): .....		1/2" FNPT

## DISASSEMBLY OF THE 21200 SERIES

- 1) Remove the seven self tapping screws (item #19) that secure the two halves of the housing together. Remove housings (items #1 and #2).
- 2) Drive out hinge pin (item #4) and remove trigger (item #3).
- 3) Remove the cap (item #13), springs (items #21 and #15), and ball (item #16).
- 4) Remove the guide sleeve (item #7), control bolt (item #10) and o-ring (item #8). Replace o-ring.
- 5) With a small dowel rod, drive-out the seats (#5) & o-ring (#18) from the guide sleeve part. Replace with new seat & o-ring.
- 6) Assemble in reverse order.

**WARNING: DO NOT USE ACID CONCENTRATES THROUGH GUN**

**WARNING: NEVER SECURE THE SHUT-OFF GUN IN AN OPEN POSITION (TRIGGER PULLED BACK) BY MEANS OTHER THAN THE OPERATOR'S HAND, ETC. BODILY HARM MAY OCCUR IF THE OPERATOR LOSES CONTROL OF THE SHUT-OFF GUN.**

**CAUTION: ALWAYS ENGAGE TRIGGER LOCKING MECHANISM (ITEM #11) WHEN NOT IN USE.**



**WARNING:** This product might contain a chemical known to the State of California to cause cancer, and birth defects or other reproductive harm.  
For more information go to [www.P65Warnings.ca.gov](http://www.P65Warnings.ca.gov)

**GIANT**

Performance Under Pressure  
Giant Industries, Inc.

900 N. Westwood Ave., Toledo, Ohio 43607

419-531-4600 Fax: 419-531-6836

[www.giantpumps.com](http://www.giantpumps.com)

© Copyright 2022 Giant Industries, Inc.

02/22 21250B.INDD