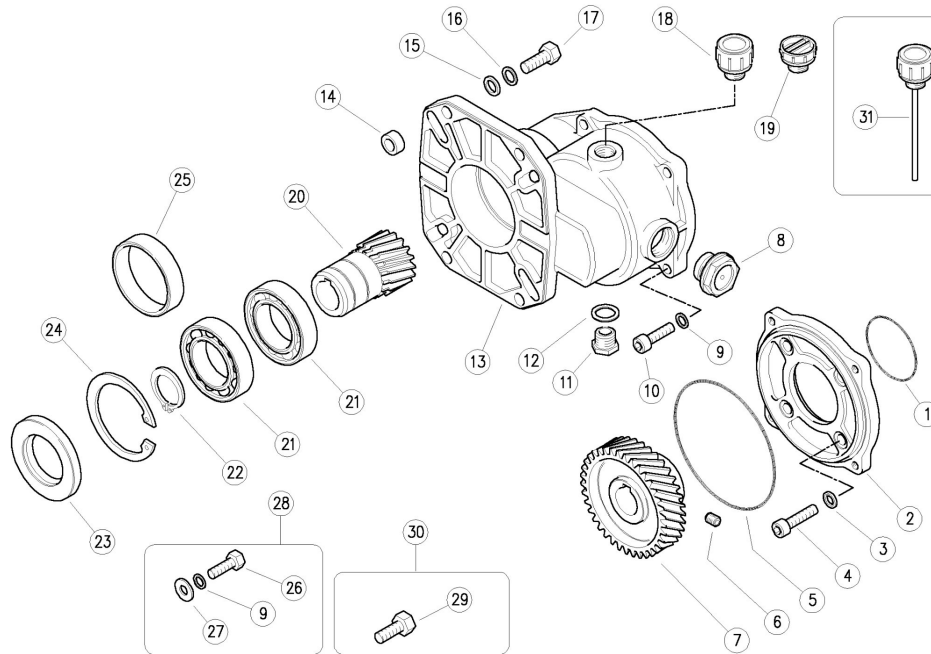


Models

08495B-1.0/08495B-1.1

**Gearbox
For Pump
Models
P54 - P59**



Item	Part#	Description	Quantity
1	05922	O-Ring	1
2	05923	Flange	1
3	05924	Gasket	4
4	05925	Inner Hexagon Screw	4
5	06458	O-Ring	1
6	06472	Screw	1
7	05926	Gear Wheel	1
8	06467	Oil Sight Glass with Seal	1
9	06460	Disc	8
10	06470	Inner Hexagon Screw	4
11	06477	Plug	1
12	06463	Gasket	1
13	06453	Gear Casing	1
14	06476	Spacer	7
15	06462	Disc	4

Item	Part#	Description	Quantity
16	06461	Disc	4
17	06471	Inner Hexagon Screw	4
18	06466	Vent Plug	1
19	06465	Shipping Plug	1
20	06474	Pinion Gear (08495B-1.0)	1
20	04155	Pinion Gear (08495B-1.1)	1
21	06459	Bearing	1
22	05929	Clip Ring	1
23	06455	Radial Shaft Seal	4
24	06457	Clip Ring	1
25	05927	Shaft Ring	1
26	03687	Screw, 5/16" UNF	4
27	13061	Washer	4
28	03688	Lock Kit (screws & washer)	1
29	04087	Screw, M10 x 35 mm	4

Operating Specifications

.....U.S. Metric

Reduction: 2.176:1

Maximum HP: 18 Hp 13.4 kW

Maximum Speed: 3150 RPM

Weight: 8.7 lbs. (3.95 Kg)

Oil Capacity: 10.2 fl. oz. ... (0.35 liters)

Recommended Oil: Giant Oil or SAE 90 Gear Lube

Connection (08495B-1.0): ... 1" Drive Shaft, 4" Max. Shaft Length

Connection (08495B-1.1): 1-1/8" Drive Shaft, 4" Max. Shaft Length

Engine Flange:.....J609B

GIANT

Performance Under Pressure

Giant Industries, Inc.
 900 N. Westwood Ave.
 Toledo, Ohio 43607
 Phone: 419-531-4600
 FAX: 419-531-6836
 www.giantpumps.com

ASSEMBLY OF THE GEARBOX ONTO PUMPS

The gearboxes are supplied partly assembled. Mount the pump onto the gearbox first.

1. Set the pump on its side (shaft pointing upwards)
2. Remove the bearing cover with the radial shaft seal. Press the radial shaft seal (sold separately) into the flange (2).
3. Attach the pump flange (2) with the radial shaft seal and o-ring (1) using screws (4) and seal ring (3). Coat the screws lightly with LOCTITE 242, tighten to 221 in-lbs. (25 Nm).
4. **VERY CAREFULLY** position the flange (2) together with the radial shaft seal onto the crankshaft of the pump. Do not push the seal lip over fitting key groove. **Damage to seal lip must be avoided.**
5. With the hub facing down, slide the gear (7) onto the pump shaft till it hits home. Simultaneously make sure that the fitting key sits correctly in its groove.
6. Coat the screw (6) lightly with LOCTITE 242 and tighten each securely.
7. Clean the contact surfaces of the flange and gear casing, place an O-ring (5) onto the flange (2) and grease it lightly.
8. With the oil fill cap facing towards the top of the pump, push the gear-casing (13) with pinion (20) onto the mounted gear (7).
9. Lightly coat the screws (10) with LOCTITE 242 and tighten the gear casing to the flange (2) with the screws and washers (9). Tighten to 221 in-lbs. (25 Nm).
10. The gear assembly is completed by screwing the sight glass (8) and oil drain plug assembly (11/12) into their required locations.
11. The gear box can now be filled with the recommended 10.2 ounces of oil. Close the oil fill hole with the oil fill plug (8).

IMPORTANT, if the gear/pump unit is not coupled immediately to the motor or if it is to be transported, it is advised to fit the transport plug (19) instead of the oil vent plug (18).

ASSEMBLY OF THE GEARBOX ON THE ENGINE

Coat the motor shaft with anti seize (e.g. LOCTITE 8150)

IMPORTANT, always use fitting keys that fit in the complete groove length of the motor shaft (e.g. Honda Q-type, fitting key length (2.0"[50.9mm])).

- Fix the gear/pump unit to the combustion engine and secure it with either 4 x M8 or 4 x 3/8-16 UNC screws (17). Coat the screws (17) lightly with LOCTITE 242 and tighten to 220 in-lbs. (25 Nm.).

IMPORTANT, If using the 3/8-16 UNC screws (17), four spacer rings (14) must be placed on the outer (6 1/2") ring holes between the flange and motor to prevent the flange from bending.

IMPORTANT, take note that the motor/gear/pump unit must run without vibration during the trial run. If not, the flange screws (17) have been unevenly tightened.

MAINTENANCE

The gearbox does not require any particular service. Initial oil change every 20 hours and then every 100 hours, every 6 months at the latest.



WARNING: This product might contain a chemical known to the State of California to cause cancer, and birth defects or other reproductive harm.
For more information go to www.P65Warnings.ca.gov

08495B Dimensions - Inches (mm)

