



Performance Under Pressure



Mobile Dual User 50,750 PSI (3500 bar) unit

Application: The integrated valves are used as multi-operation control valves for gun operation as well as control valves for hydroforming, hydraulic installations, etc. The electric power and pneumatic pressure is supplied from external units (eg. a KAMJET) or by the customer.

Material: All parts coming in contact with fluid are stainless steel. Also available in seawater-resistant materials on request.

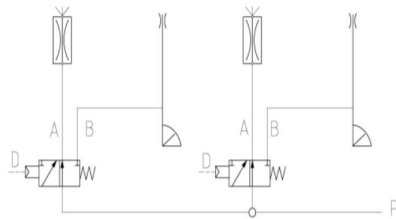
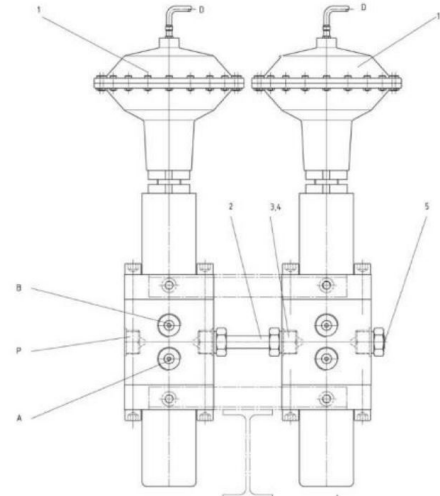


Technical Data

Part No.:	7027064
Medium:	maximum 1000 mPas
Flow:	13.2 GPM (50 lpm)
Working Pressure:	50,750 PSI (3500 bar)
Required Air Pressure:	87 - 116 PSI (6 - 8 bar)
HP Connection:	M 14x1.5 LH / M 26x1.5
Flow Divider Outlet:	1" BSP Female

Parts Included:

- 2x 2/2 way pneumatic control valve
- 1x Electro pneumatic control paney box
- 2x Cable reel for remote control - 164 feet (50 meters)
- 1x Cable reel for air supply - 66 feet (20 meters)
- 1x Cable reel for electric power supply - 66 feet (20 meters)
- 2x Flow divider with nozzles and bypass connector
- 2x Tool supporter (eg. maximum of 2 guns)
- 1x Mobile base frame with rigid and swivel wheels



D = Air connection P = HP inlet
A = Outlet flow divider B = Outlet gun



HP - Guns, hoses and nozzles are not included with this system and ordered separately -depending on the application