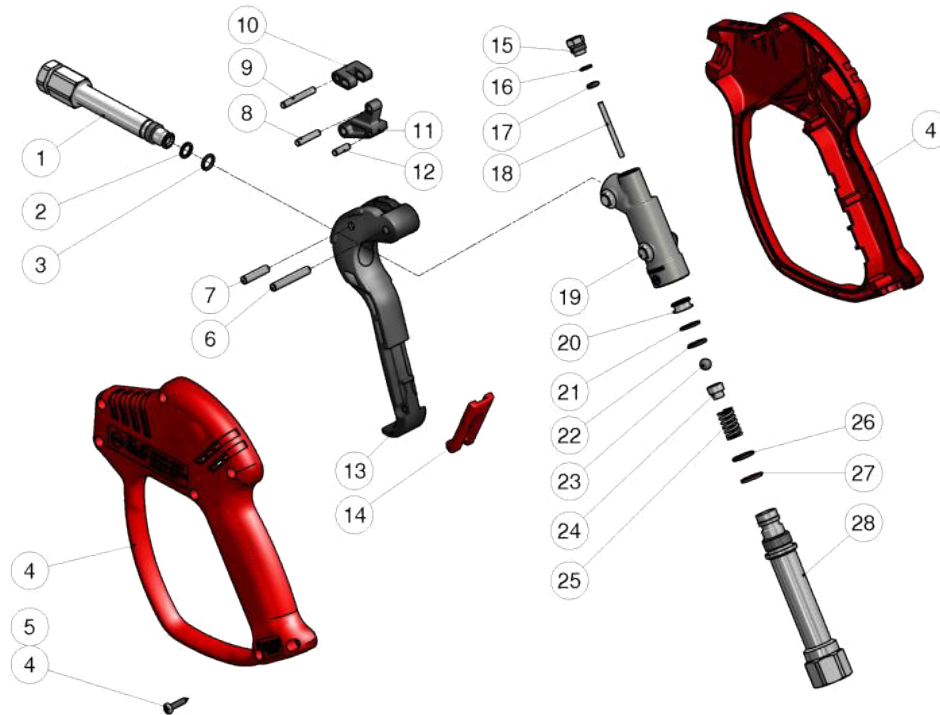


Model 21475

Stainless Steel Shut-Off Gun



PARTS LIST

<u>Item</u>	<u>Part #</u>	<u>Description</u>	<u>Qty</u>
1	03093	Discharge Fitting	1
2	03094	Back Up Ring	1
3	08880	O-Ring	1
4	03095	Housing with Screws	1
5	04052	Self Tapping Screw	7
6	03096	Parallel Pin, 5 x 33 mm	1
7	03097	Parallel Pin, 5 x 22 mm	1
8	03098	Parallel Pin, 4 x 20 mm	1
9	03099	Parallel Pin, 4 x 29 mm	1
10	03100	Connecting Rod	1
11	03101	Connecting Rod	1
12	03102	Parallel Pin, 4 x 13 mm	1
13	03103	Trigger	1
14	04048	Safety Latch, Red	1
15	03104	Plug	1
16	04045	Back-Up Ring	1
17	04044	O-Ring	1
18	03105	Piston Rod	1
19	03106	Housing	1
20	03107	Seat	1
21	03108	Back-Up Ring	1
22	03109	O-Ring	1
23	03110	Ball	1
24	03111	Guide	1
25	03112	Spring	1
26	03113	O-Ring	1
27	03114	Back-Up Ring	1
28	03115	Inlet Fitting	1

Repair Kit - #09828

includes 2, 3, 16-18, 20-23, 26, 27

OPERATING SPECIFICATIONS

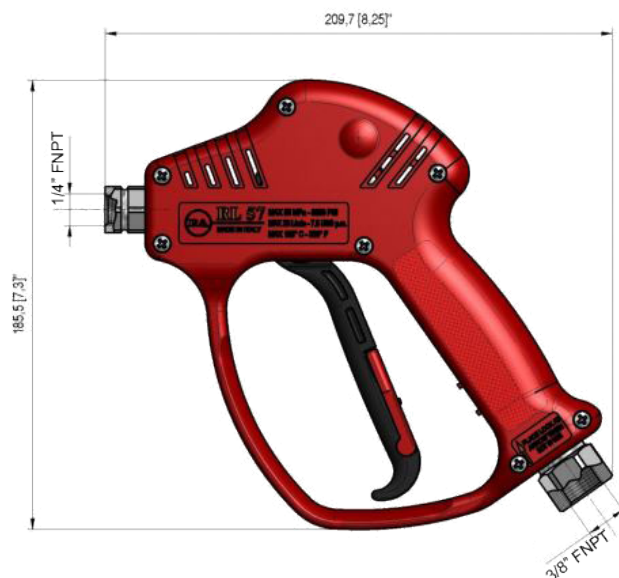
	<u>U.S.</u>	<u>Metric</u>
Maximum Flow:	7.4 GPM	28 L/min
Maximum Pressure:	7250 PSI	500 Bar
Permissible Pressure:	7975 PSI	550 bar
Maximum Temperature:	320° F	160° C
Weight:	1.9 lbs.	840 grams
Inlet Port:		3/8" FNPT
Outlet Port:		1/4" FNPT

NOTE: The gun has been designed for continuous use at a water temperature of 195 °F (90 °C). It can only operate at 320 °F (160 °C) for short periods of time, as when the gun shuts off, the heater continues to transmit the heat to the water, thus increasing both temperature and pressure up to high, dangerous values. Using the gun at a water temperature higher than 140 °F (60 °C) involves for the operator the use of adequate safety devices, such as gloves, glasses, etc.



WARNING
HIGH PRESSURE
DO NOT POINT AT INDIVIDUAL
MAY CAUSE SERIOUS INJURY!

DIMENSIONS – mm (inches)



INSTRUCTIONS

This product is to be utilized with clean fresh water, even slightly addivated with normal detergents. For use involving different or corrosive liquids, contact Giant's technical department. Appropriate filtration should be installed when using unclean liquids. Choose the gun in line with the data of nominal running (system rated pressure, max flow and max temperature). In any case, the pressure of the machine should not exceed the permissible pressure rate imprinted on the gun.

INSTALLATION

This gun was designed to operate with **hot water** (in compliance with the technical specs). Provide the plant generating **hot water** with an equipment limiting the incidental increase of the fluid temperature.

Always fit a safety valve to protect the delivery conduct when the latter is under pressure.

Choose a suitable nozzle and adjust the valve mounted in the front of the gun, thus obtaining a constant supply and avoiding unpleasant pressure spike when closing the system.

If the nozzle wears out, the pressure falls. When you install a new nozzle, adjust the system back to the original pressure.

OPERATION

The gun opens and closes a high pressure conduct by means of a piston acting on a seat; the return is controlled by a spring which releases the trigger. **Attention: during pump activation always set the gun with its safety latch connected in order to prevent accidental openings.**

WATER HOSE FEED

By high or very unsteady pressure values on delivery, it is necessary to mount a pressure reducer, both to level the flow rate on delivery and to protect the system components.

PROBLEMS AND SOLUTIONS		
PROBLEMS	PROBABLE CAUSES	SOLUTIONS
Leakage from the nozzle	Presenst of impurities Gun seat worn out	Clean Replace the seat Fit adequate filters and/or check
Leaking seals	Seals worn out	Replace
Difficult trigger opening	High pressure inside circuit	Check the bypass valve and adjust it if necessary

MAINTENANCE

Maintenance has to be carried out by Specialized Technicians.

STANDARD: every 400 working hours (circa 10,000 cycles), check and lubricate the seals with water resistant grease.

SPECIAL: every 800 working hours (circa 20,000 cycles), check the wear of the seals and internal parts and if necessary, replace with original Giant parts, taking care during installation to lubricate with water resistant grease.

CAUTION: re-assemble the gun restoring the original conditions.

The manufacturer is not to be considered responsible for damage as a result from incorrect fitting and maintenance.

GIANT
Performance Under Pressure

Giant Industries, Inc.
900 N. Westwood Ave., Toledo, OH 43607
419-531-4600 Fax: 419-531-6836
www.giantpumps.com
© Copyright 2019 Giant Industries, Inc.