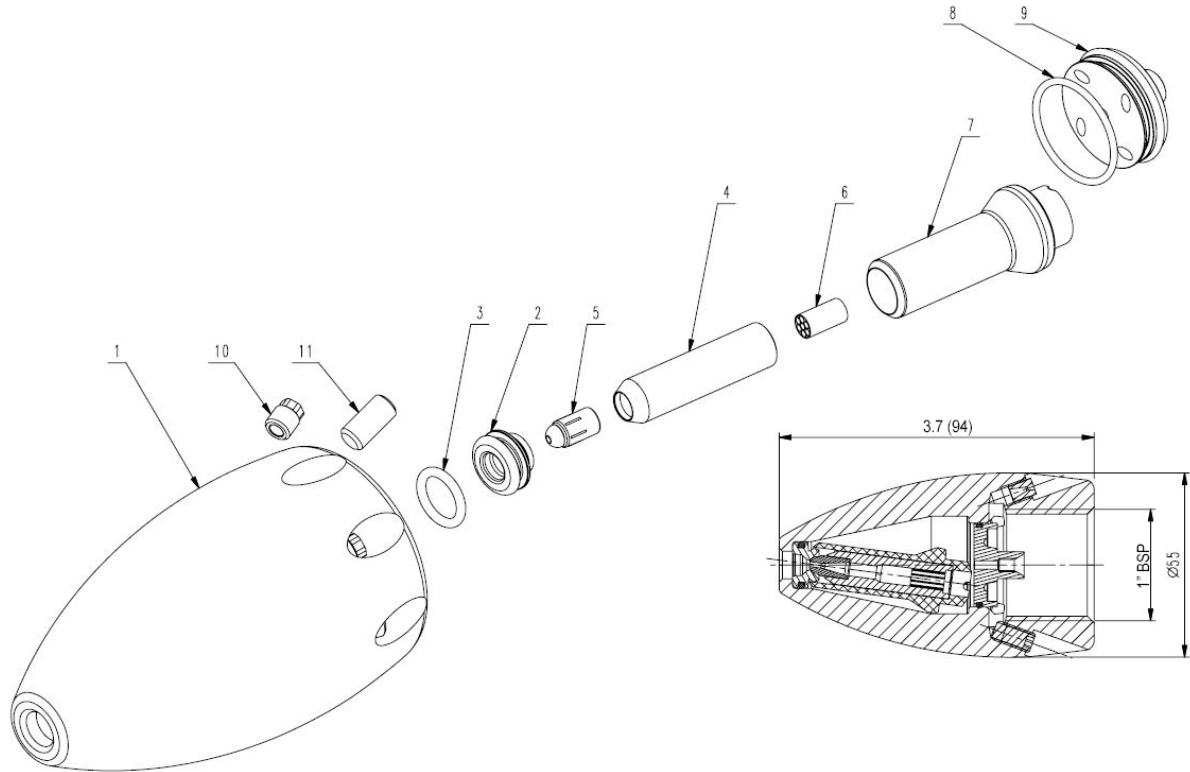


Series 23820-16

Sewer Cleaning Turbo Nozzle



Operating Conditions

	U.S	(Metric)
Maximum Flow:	47.6 GPM	(180 L/min)
Maximum Pressure:	4350 PSI	(300 bar)
Nozzle Size:		#6.0
Spray Angle to Front:		24°
Spray Angle to Back:		40°
Maximum Temperature:	195 °F	(90 °C)
Bearing:		Ceramic
Nozzle:		Ceramic
Weight:	1.8 lbs.	(800 g)
For Pipe Diameter:	4"	(100 mm)
Connection:		1" FBSP

Parts List

Item	Description	Qty
1	Housing	1
2	Seat	1
3	O-Ring	1
4	Rotor Housing	1
5	Ceramic Nozzle	1
6	Straightener	1
7	Nozzle Housing	1
8	O-Ring	1
9	Channel Fitting	1
10	Ceramic Nozzle, M6x1.2mm	?*
11	Set Screw, M6x1.2mm	?*

*Quantity varies based on flow and pressure

Repair Kit - 09827-XX

Included in kit: parts 2-9

GIANT

Performance Under Pressure

Giant Industries, Inc.

900 N. Westwood Ave.

Toledo, Ohio 43607

PHONE: 419-531-4600

FAX: 419-531-6836

www.giantpumps.com

© Copyright 2019 Giant Industries, Inc.



Note: When ordering a nozzle, determine the desired flow and pressure and the correct inserts (13) will be used in the nozzle.