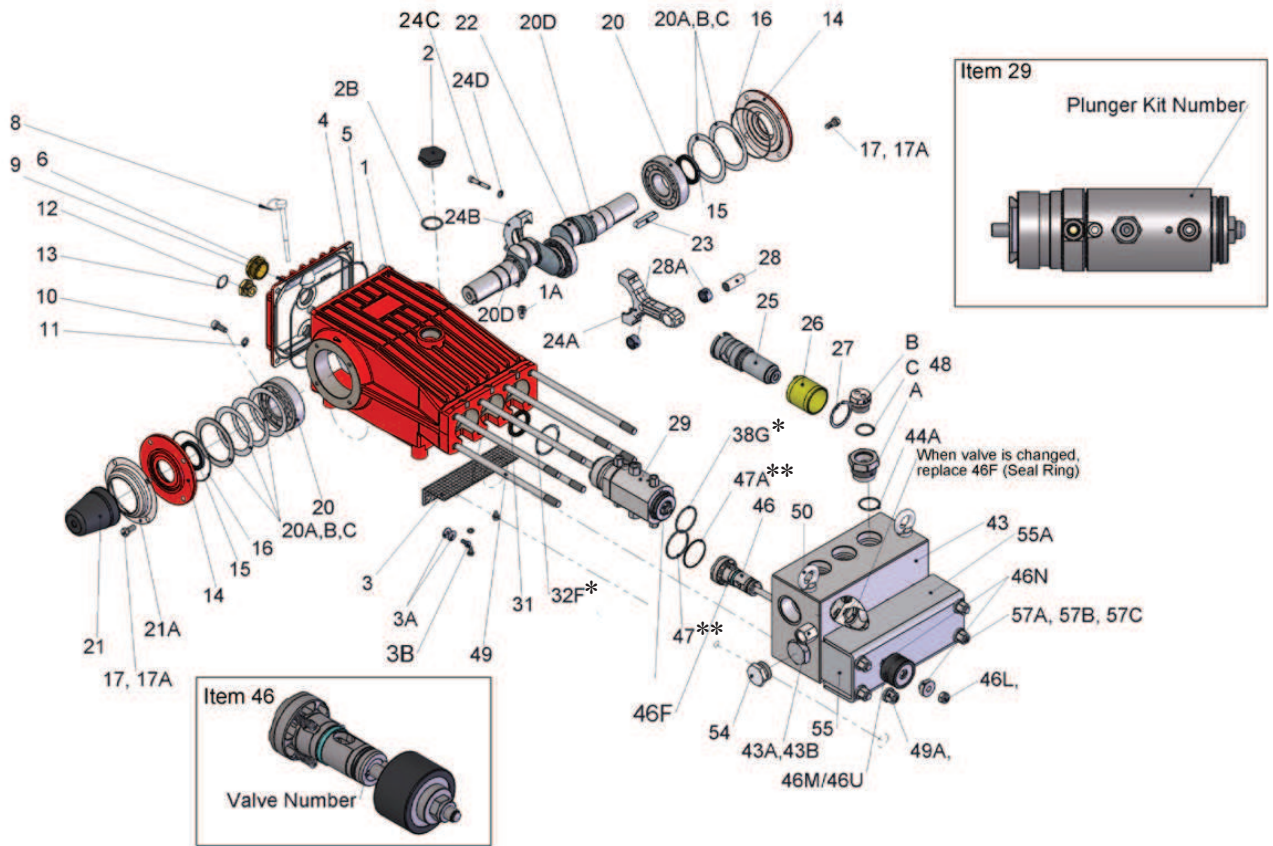


CLP124 SPARE PARTS LIST - FLUID END



ITEM	PART	DESCRIPTION	QTY	ITEM	PART	DESCRIPTION	QTY
1	CP04807	Crankcase	1	23	CP13243	Fitting Key	1
1A	CP04808	Fixing Screw	3	24	CP04810	Connecting Rod Assembly	3
2	CP13000	Oil filler Plug Assembly	1	25	CP04815	Crosshead w/Plunger	3
2B	CP07102	O-Ring	1	26	CP04816	Crosshead Sleeve	3
3	CP04802	Metal Cover	1	27	CP04817	Clip Ring	3
3A	CP04803	Washer	4	28	CP04818	Crosshead Pin	3
3B	CP04809	Hexagon Screw	2	28A	CP04819	Needle Bush	6
4	CP06085	Crankcase Cover	1	29	CP04820	Plunger Kit	1
5	CP07104	O-ring	1	31	CP07624	Radial Shaft Seal	3
6	CP05943	Oil Sight Glass Asembly	1	43	CP04821	Valve Casing	1
8	CP06086	Oil Dipstick	1	43A	CP04822	Restrictor	1
9	CP01009	O-Ring	1	43B	CP06272	Copper Seal Ring	1
10	CP07114-0100	Hexagon Socket Screw	4	44A	CP07150-0003	O-Ring	3
11	CP04811	Safety Washer	4	46	CP04823	Valveset	1
12	CP07109	Plug, 1/2" BSP	1	47	CP04824	O-Ring	3
13	CP06015	O-Ring	1	47A	CP04825	Support Ring	3
14	CP07111	Bearing Cover	2	48	CP04826	Cooler Plug Assembly	3
15	CP07112	Radial Shaft Seal	2	49	CP04827	Stud Screw	8
16	CP07113	O-Ring	2	49A	CP13430	Hexagon Nut with Rim	8
17	CP07114-0100	Hexagon Socket Screw	8	49B	CP07416	Ball (not shown)	8
17A	CP04811	Safety Washer	8	50	CP04828	Eye Bolt	2
20	CP04812	Roller Bearing	2	54	CP04829	Plug, 1" BSP	1
20A	CP07117	Fitting Disc	1	54A	CP13372-0300	Copper Seal Ring	1
20B	CP13001	Fitting Disc	2	55	CP04830	Support Strip for cathode plate	2
20C	CP04091	Fitting Disc	3	55A	CP04831	Cath Plate	1
20D	CP04813	Spacer Ring	2	57A	CP07416	Ball	4
21	CP05376	Shaft Guard	1	57B	CP04832	Stud Bolt	4
21A	CP05377	Shaft Guard Holder	1	57C	CP13430	Hexagon Nut with Rim	4
22	CP04814	Crankshaft Assembly	1				

*Part of the complet plunger kit; not sold separately

**Part of the Valveset; not sold separately