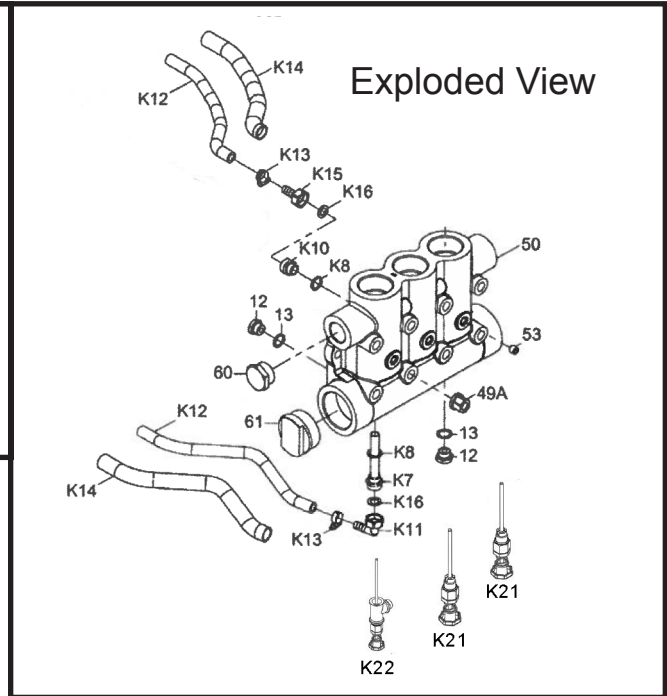
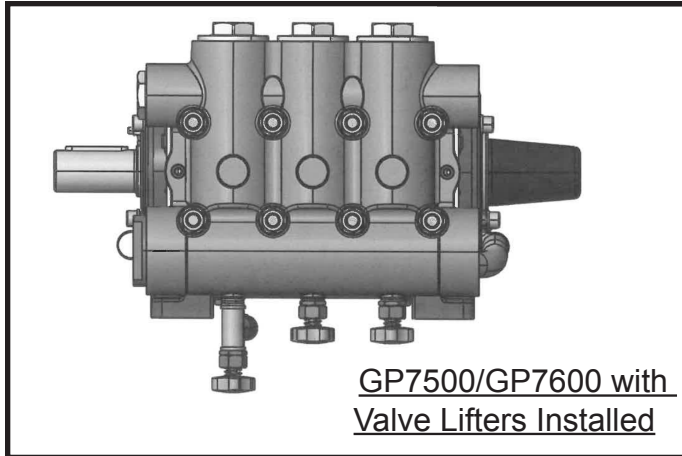


MODEL 22321

VALVE LIFTERS FOR USE WITH GP7500/GP7600 SERIES HIGH FLOW PUMPS



Valve Lifter Conversion Kit

<u>Item</u>	<u>Part #</u>	<u>Description</u>	<u>Qty.</u>
K15	05404	Hose Coupling Nut	1
K16	05405	Flat Gasket	1
K21	04161	Valve Lifter	2
K22	04162	Valve Lifter with Coolant Connection	1

Assembly of the 22321 to GP7500/GP7600 Series Pumps

- 1) Open the U-joint connector (K11) and remove it from the cooler hose (K12) by loosening the hose clamp (K13) and twisting or cutting the hose around the U-joint connector (K11).
- 2) Replace the U-joint connector (K11) with the hose coupling (K15) and flat gasket (K16) provided. Tighten the hose clamp (K13).
- 3) Next, apply teflon tape to the end of the connection for oil cooler (K7) that is protruding from the bottom of the valve casing (50). Twist the valve lifter (K22) onto the connection for the oil cooler (K7) until hand tight and then tighten it with a wrench.
NOTE: Make sure the T-fitting on the valve lifter is facing the rear of the pump.
- 4) Attach the hose assembly to the T-fitting on the valve lifter (K22) and tighten it with a wrench.
- 5) Remove the two plugs (59) and copper gaskets (59A) underneath the valve casing (50). Insert the two valve lifters (K21) into the two locations underneath the valve casing (50). Tighten with a wrench.

Valve Lifter Operation

- 1) To operate the valve lifters, simply push up on the plastic handwheel to relieve the pump of any water in the inlet.
- 2) If you would like to hold the valves in the up position, simply push up on the plastic handwheel and turn the handwheel 90°.
- 3) To release the valve lifters, simply push up on the plastic handwheel and twist 90° in the opposite direction.

GIANT
Performance Under Pressure

Giant Industries, Inc.
900 N. Westwood Ave.
Toledo, OH 43707
(419) 531-4600
(419) 531-6836 Fax
www.giantpumps.com