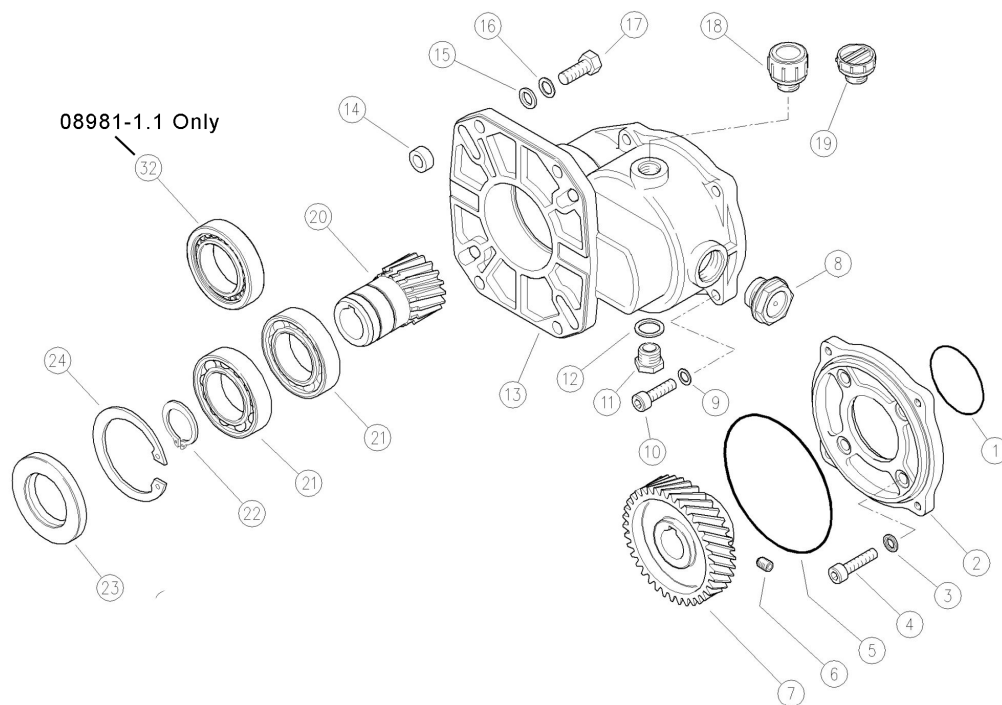


# Models

## 08498-1.0/08498-1.8/ 08980-1.0/08980-1.8/08981-1.8

Gearbox  
for P400 Series  
Pumps



Item	Part#	Description	Qty
1	05922	O-Ring	1
2	04362	Pump Mounting Flange	1
3	05924	Washer	4
4	05925	Inner Hexagon Cap Screw	4
5	06458	O-Ring	1
6	06472	Screw	1
7	04364	Ring Gear	1
8	06467	Oil Sight Glass with Seal	1
9	06460	Washer	4
10	06470	Inner Hexagon Cap Screw	4
11	06477	Plug	1
12	06463	Gasket	1
13	06453	Gear Box Casing	1
14	06476	Spacer Ring	4
15	06462	Washer	4
16	06461	Washer	4
17	06471	Inner Hexagon Cap Screw	4
18	06466	Oil Vent Plug	1
19	06465	Shipping Plug	1
20	04155	Pinion Shaft	1
21	06459	Ball Bearing (08498 Series)	2
21	04976	Ball Bearing (08980 Series)	2
21	04976	Ball Bearing (08981-1.8)	1
22	06456	Snap Ring, Small	1
23	06455	Radial Shaft Seal	1
24	06457	Snap Ring, Large	1
32	04977	Ball Bearing (08981-1.8)	1

### Operating Specifications

For direct coupling of P400 Series Triplex pumps to gas-engines running at speeds (motor revolutions) of up to 3100 rpm. The operating speed (pump revolutions) under full load is not to exceed 1425 RPM. Gas engine revolutions must be reduced accordingly.

Reduction: 2.176:1

Weight: 8.7 lbs. (3.95 kg)

Maximum Power: 17.4 HP (13.0 kW) - 08498 Series  
24 HP (17.7 kW) - 08980 Series  
31 HP (23 kW) - 08981-1.8

Oil Capacity: 10 fl. oz. (0.35 L)

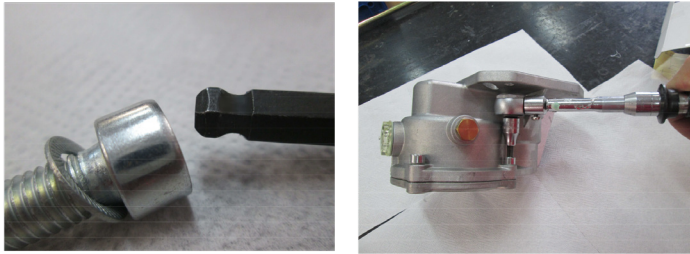
Recommended Oil: Giant Oil (p/n 01154) SAE Industrial Gear Lube 80/90 weight

Connections: 08498-1.0 = 1" Drive Shaft, 4" Shaft Length  
08980-1.0 = 1" Drive Shaft, 4" Shaft Length  
08498-1.8 = 1-1/8" Drive Shaft, 4" Shaft Length  
08980-1.8 = 1-1/8" Drive Shaft, 4" Shaft Length  
08981-1.8 = 1-1/8" Drive Shaft, 4" Shaft Length

Engine Flange: J609B

## ASSEMBLY OF THE GEARBOX ON PUMPS:

1. Put the pump shaft in a vertical position. Remove the four bolts which keep the bearing cover onto the pump housing. Do not remove bearing cover.
2. Install o-ring (1) onto the flange (2); then secure flange to bearing cover of the pump with the bolts (4) with the pertinent seal washers, setting on the threaded part LOCTITE 242 and fix it with 25 Nm (221 in.-lbs.).
3. Make sure that the key is correctly set on the keyway, assemble the ring gear (7) onto the pump shaft; pushing and secure it with the grub screw (6) which has LOCTITE 242 to a torque of 20 Nm (177 in.-lbs.).
4. Complete the assembly of the casing [preassembled gear box with pinion (20), bearings (21/32) and oil seal (23)] with the oil sight glass (8) and the drain plug (11) and gasket (12).
5. Insert the O Ring (5) on the flange already fixed to the pump, and assemble of the body on that same flange using the bolts (10) and pertinent elastic washers with a torque of 25 Nm (221in.-lbs.) MAX. **To use a torque wrench with a hex key insert with a ball head as shown in the picture below.**



6. Fill the casing (13) with oil (SAE 80W-90 - Giant's #01154) up to the level shown at the center of the sight glass. Install the vent plug (18). In case the unit gearbox-pump is not immediately coupled to the engine, and should it be transported, it is advised to use temporarily the shipping plug (19).

## ASSEMBLY OF THE UNIT ON ENGINE:

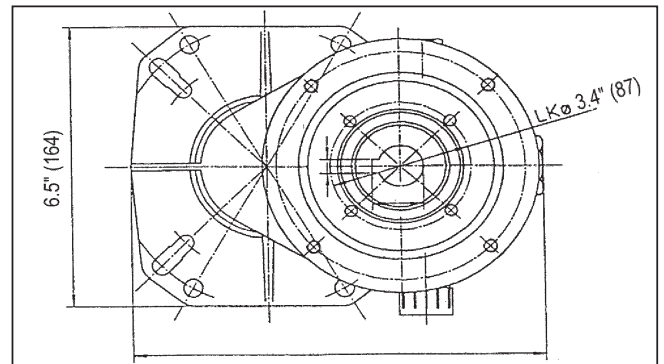
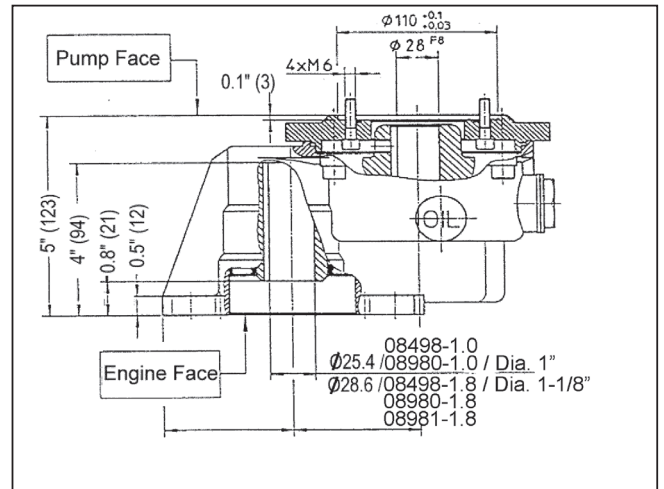
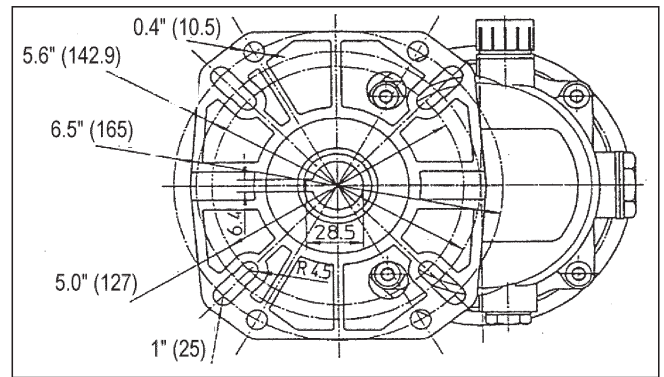
1. Check that the key of the Engine shaft is correctly set on the keyway then apply on the same shaft a good lubricating antiseize (LOCTITE 8150) onto the engine shaft.
2. Use the screws (17) and washers to secure the gearbox to the engine. Tighten screws to 40 Nm (354 in.-lbs). If the engine has a short shaft, lock the feather key axially.



**WARNING:** This product might contain a chemical known to the State of California to cause cancer, and birth defects or other reproductive harm.

For more information go to [www.P65Warnings.ca.gov](http://www.P65Warnings.ca.gov)

## Dimensions: inches (mm)



**GIANT**  
Performance Under Pressure

Giant Industries, Inc.  
900 N. Westwood Ave.  
Toledo, Ohio 43607  
419-531-4600  
FAX 419-531-6836  
[www.giantpumps.com](http://www.giantpumps.com)  
© Copyright 2019 Giant Industries, Inc.  
10/20 8498A.indd