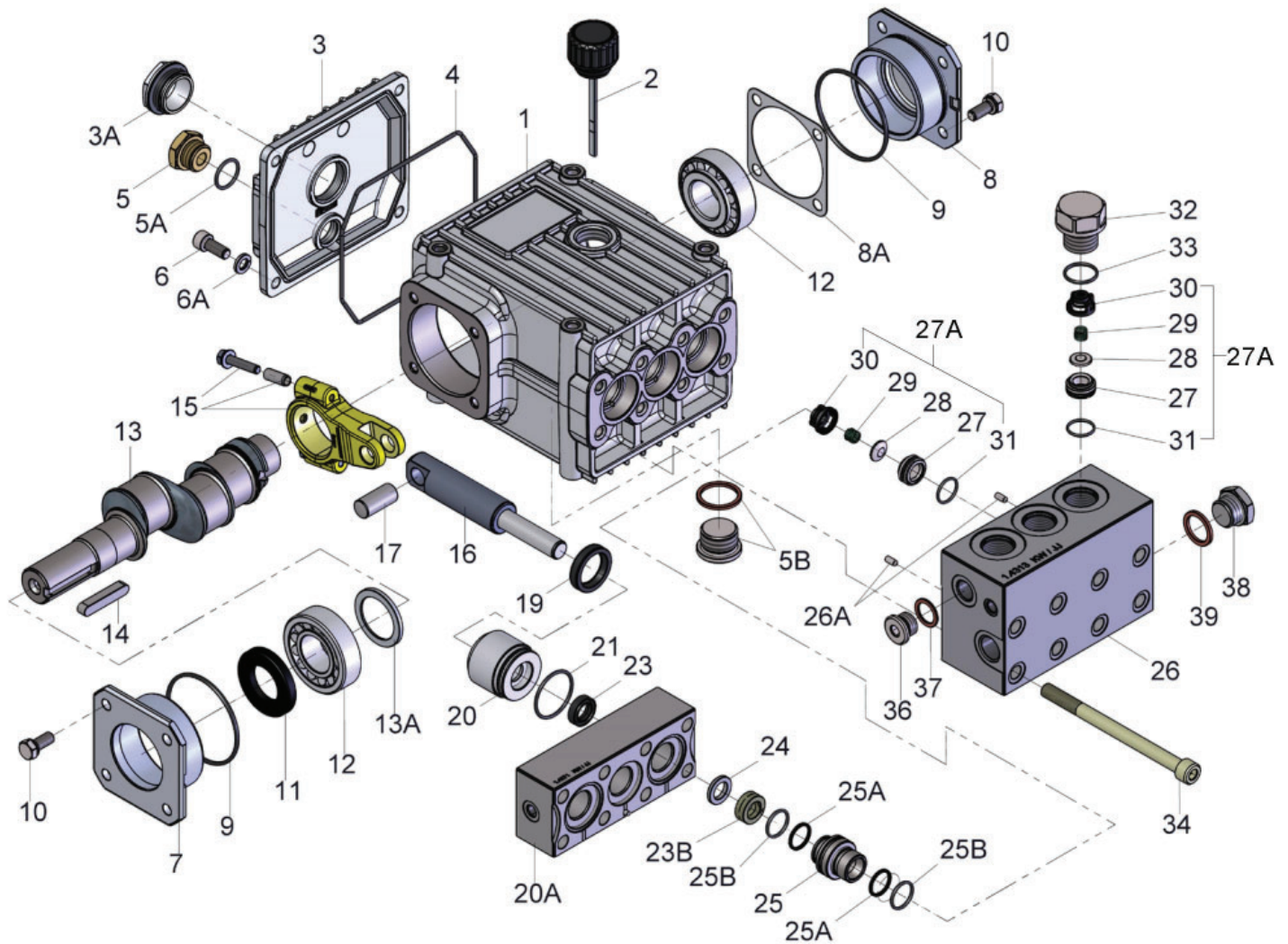


Exploded View - CP460-4053

**Note: Do not use mineral oil on seals and o-rings.
Use silicone grease only.**



CP460-4053 REPAIR KITS

Plunger Packing Kits

Part # CP09499A-0023

Item	Part #	Description	Qty.
21	CP07266-0003	O-Ring	3
23	CP04762	Grooved Seal Packing	3
23B	CP03582	Coiled Seal Ring	3
24	CP03583	Pressure Ring	3
25A	CP04764	Support Ring	6
25B	CP06818	O-Ring	6

Valve Assembly Kits

Part # CP09498-0003

Item	Part #	Description	Qty.
27A	CP05543	Valve Assembly	6
33	CP05545-0003	O-Ring	3

Oil Seal Kit

Part # CP09641

Item	Part #	Description	Qty.
19	CP05444	Oil Seal	3

CP460-4053 PARTS LIST

<u>ITEM</u>	<u>PART</u>	<u>DESCRIPTION</u>	<u>QTY.</u>	<u>ITEM</u>	<u>PART</u>	<u>DESCRIPTION</u>	<u>QTY.</u>
1	CP08377	Crankcase	1	20A	CP04761	Seal Case	1
2	CP08378	Oil Fill Plug with Gasket	1	21	CP07266-0003	O-Ring	3
3	CP06479	Crankcase Cover	1	23	CP04762	Grooved Seal Packing	3
3A	CP07186	Oil Sight Glass w/Gasket	1	23B	CP03582	Coiled Seal Ring	3
4	CP08380	O-Ring	1	24	CP03583	Guide Ring	3
5	CP07109	Oil Drain Plug	1	25	CP03584	Seal Case	3
5A	CP06015	O-Ring	1	25A	CP04764	Support Ring	6
5B	CP08092	Plug with Gasket	1	25B	CP06818	O-Ring	6
6	CP01010	Screw	4	26	CP04874	Valve Casing	1
6A	CP01011-0400	Spring Washer	4	26A	CP04767	Set Screw	2
7	CP04739	Bearing Cover, Open	1	27A	CP05543-0003	Valve Assembly	6
8	CP05291	Bearing Cover, Closed	1			(Includes items 27-31)	
8A	CP05292	Shim	1-6	27	CP05541	Valve Seat	6
9	CP01016	O-Ring	2	28	CP05542	Valve Plate	6
10	CP07114	Screw with Washer	8	29	CP07906	Valve Spring	6
11	CP07459	Radial Shaft Seal	1	30	CP07907	Spring Tension Cap	6
12	CP05350	Bearing	2	31	CP07770-0003	O-Ring	6
13	CP04741	Crankshaft	1	32	CP08406-0100	Plug	3
13A	CP04742	Spacer Ring	1	33	CP05545-0003	O-Ring	3
14	CP08091	Fitting Key	1	34	CP06494	Cap Screw	8
15	CP08390	Connecting Rod Assy.	3	36	CP04369	Plug, 3/8" BSP	1
16	CP06480	Plunger Assembly	3	37	CP08486	Copper Washer	1
17	CP06790	Crosshead Pin	3	38	CP07109-0400	Plug, 1/2" BSP	1
19	CP05444	Radial Shaft Seal	3	39	CP06272	Copper Washer	1
20	CP05938	Seal Adapter	3				

CP460-4053 PUMP TORQUE SPECIFICATIONS

Position	Item #	Thread Size	Description	Lubrication Info	Torque Amount
3A	CP07186	1" BSP	Oil Sight Glass w/Gasket	Loctite 5910	106 in.-lbs. (12 Nm)
5	CP07109	1/2" BSP	Oil Drain Plug		59 ft.-lbs. (80 Nm)
5B	CP08092	3/4" BSP	Plug with Gasket		59 ft.-lbs. (80 Nm)
6	CP01010	M8	Screw		110 in.-lbs. (12.5 Nm)
10	CP07114	M8	Screw with Washer		132 in.-lbs. (15 Nm)
15	CP08390	M6	Screw with Washer		97 in.-lbs. (11 Nm)
32	CP08406-0100	M24x1.5	Plug	Pro Pack 550	110 ft.-lbs. (150 Nm)
34	CP06494	M10	Cap Screw		30 ft.-lbs. (40 Nm)