

Model 21795

High Flow Shut-Off Gun



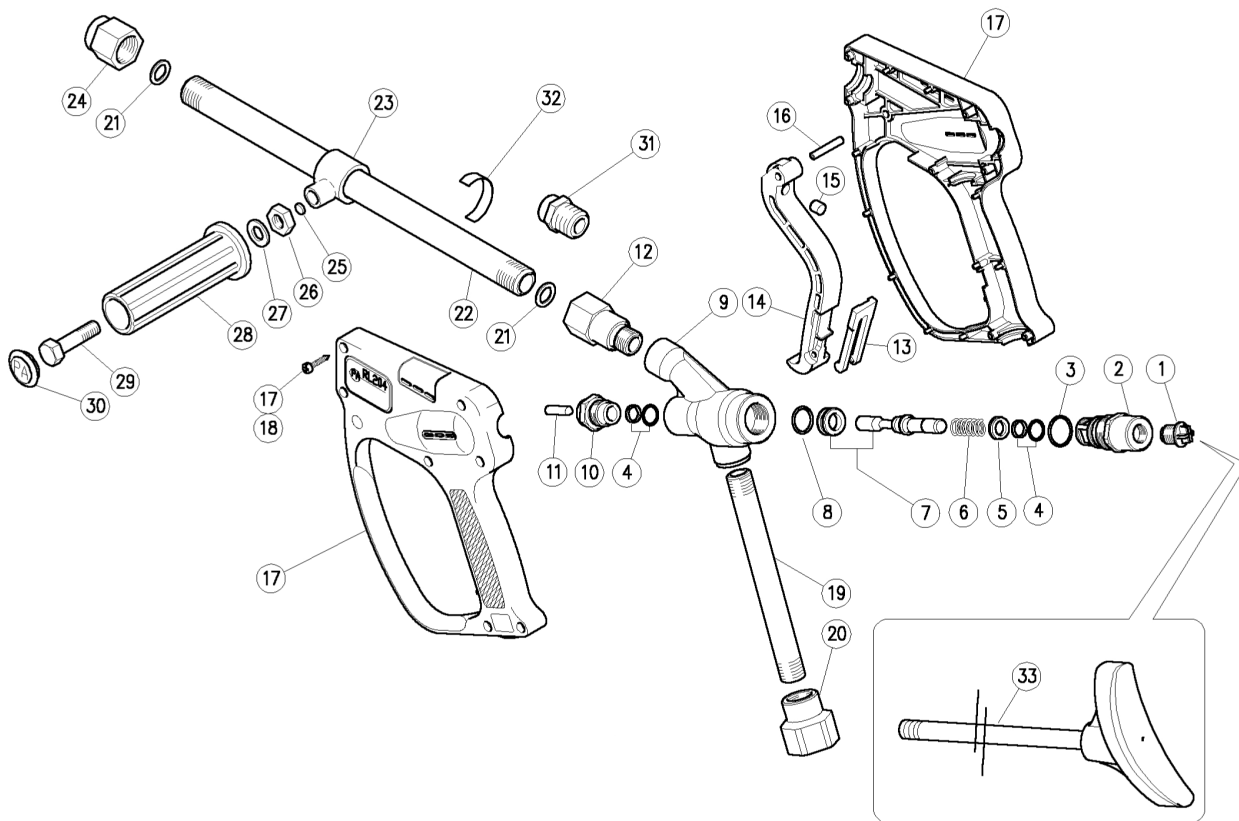
OPERATING SPECIFICATIONS

| | <u>U.S.</u> | <u>Metric</u> |
|----------------|-------------|---------------|
| Max. Flow: | 52.8 GPM | 200 L/min |
| Max. Pressure: | 2900 PSI | 200 Bar |
| Max.Temp.: | 212°F | 100°C |
| Weight: | 2.97 lbs. | 1348 grams |
| Inlet Port: | | 3/4" BSP |
| Outlet Port: | | 1/2" BSP |

NOTE: The gun has been deisned for continuous use at a water temperature of 140° F (60° C). It can only operate at 212° F (100° C) for short periods of time.



WARNING
HIGH PRESSURE
DO NOT POINT AT INDIVIDUAL
MAY CAUSE SERIOUS INJURY!



| Item | Part # | Description | Qty. | Item | Part # | Description | Qty. |
|------|--------|-----------------|------|------|--------|--------------------|------|
| 1 | 04038 | Plug | 1 | 18 | 04052 | Self Tapping Screw | 7 |
| 2 | 04307 | Spring Holder | 1 | 19 | 04053 | Tube | 1 |
| 3 | 08719 | O-Ring | 1 | 20 | 03065 | Inlet Fitting | 1 |
| 4 | 04310 | Stem Seal | 2 | 21 | 04080 | Washer | 2 |
| 5 | 04308 | Spacer Ring | 1 | 22 | 04355 | Tube, 15" | 1 |
| 6 | 04309 | Spring | 1 | 22 | 04356 | Tube, 31" | 1 |
| 7 | 04305 | Piston and Seal | 1 | 22 | 04357 | Tube, 49" | 1 |
| 8 | 08706 | O-ring | 1 | 23 | 04084 | Tube Fastener | 1 |
| 9 | 03064 | Housing | 1 | 24 | 04172 | Nozzle Holder | 1 |
| 10 | 04304 | Front Plug | 1 | 25 | 21771 | Plate | 2 |
| 11 | 04348 | Parallel Pin | 1 | 26 | 04085 | Hexagon Nut | 1 |
| 12 | 04047 | Coupling | 1 | 27 | 04086 | Washer | 1 |
| 13 | 04048 | Safety Latch | 1 | 28 | 13062 | Knob | 1 |
| 14 | 04049 | Trigger | 1 | 29 | 04087 | Screw | 1 |
| 15 | 04351 | Stop Pin | 1 | 30 | 04088 | Plug | 1 |
| 16 | 04050 | Parallel Pin | 1 | 31 | 21677 | Nozzle Holder | 1 |
| 17 | 04392 | Casing Kit | 1 | 33 | 04089 | Shoulder Rest | 1 |

Spares Kit - #09745

| Item | Part # | Description | Qty. |
|------|--------|---------------|------|
| 23 | 04084 | Tube Fastener | 1 |
| 25 | 21771 | Plate | 2 |
| 26 | 04085 | Hexagon Nut | 1 |
| 27 | 04086 | Washer | 1 |
| 28 | 13062 | Knob | 1 |
| 29 | 04087 | Screw | 1 |
| 30 | 04088 | Plug | 1 |

Knob Kit - #04377

| Item | Part # | Description | Qty. |
|------|--------|-------------|------|
| 26 | 04085 | Hexagon Nut | 1 |
| 27 | 04086 | Washer | 1 |
| 28 | 13062 | Knob | 1 |
| 29 | 04087 | Screw | 1 |
| 30 | 04088 | Plug | 1 |

MAINTENANCE

Maintenance has to be carried out by **Specialized Technicians**.

Standard: every 400 working hours (circa 10,000 cycles), check and lubricate the seals with water resistant grease.

Special: every 800 working hours (circa 20,000 cycles), check the wear of the seals and internal parts and if necessary, replace with original Giant parts, taking care during installation to lubricate with water resistant grease.

CAUTION: Re-assemble the gun restoring the original conditions.

The manufacturer is not to be considered responsible for damage as a result from incorrect fitting and maintenance.

INSTRUCTIONS

This product is to be utilized with clean fresh water, even slightly additivated with normal detergents. For use involving different or corrosive liquids, contact Giant's technical department. Appropriate filtration should be installed when using unclean liquids. Choose the gun in line with the data of nominal running (system rated pressure, max flow and max temperature). In any case, the pressure of the machine should not exceed the permissible pressure rate imprinted on the gun.

INSTALLATION

This gun was designed to operate with **hot water** (in compliance with the technical specs). Provide the plant generating **hot water** with an equipment limiting the incidental increase of the fluid temperature.

Always fit a safety valve to protect the delivery conduct when the latter is under pressure.

Choose a suitable nozzle and adjust the valve mounted in the front of the gun, thus obtaining a constant supply and avoiding unpleasant pressure spike when closing the system.

If the nozzle wears out, the pressure falls. When you install a new nozzle, adjust the system back to the original pressure.

OPERATIONS

The gun opens and closes a high pressure conduct by means of a piston acting on a seat; the return is controlled by a spring which releases the trigger. **Attention: during pump activation always set the gun with its safety latch connected in order to prevent accidental openings.**

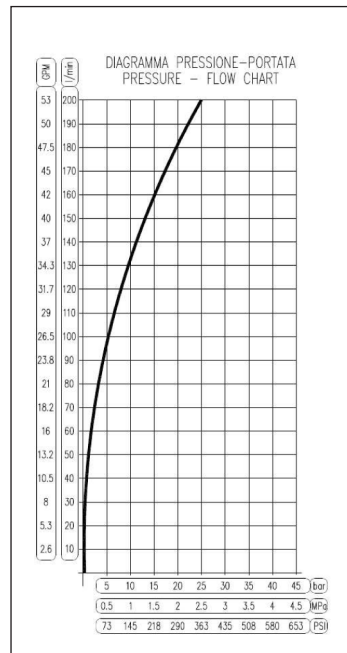
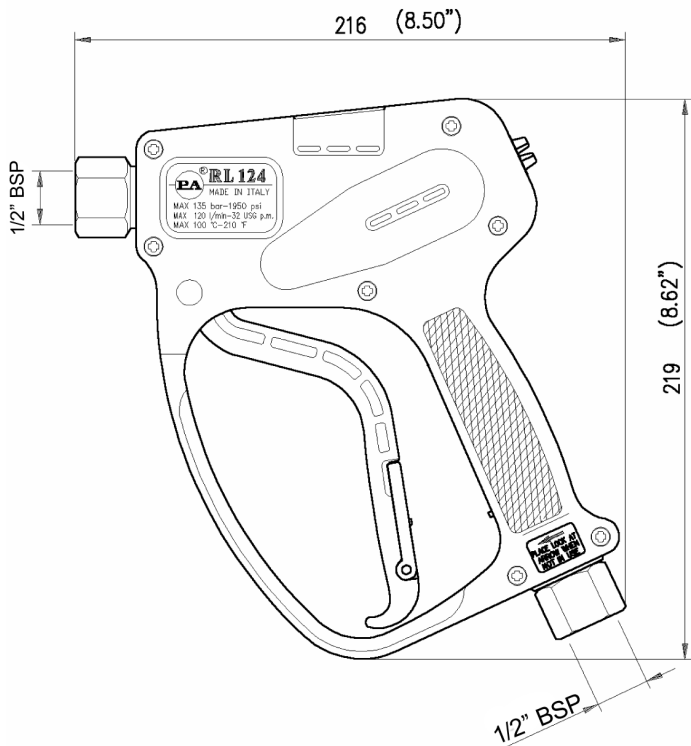
WATER HOSE FEED

By high or very unsteady pressure values on delivery, it is necessary to mount a pressure reducer, both to level the flow rate on delivery and to protect the system components

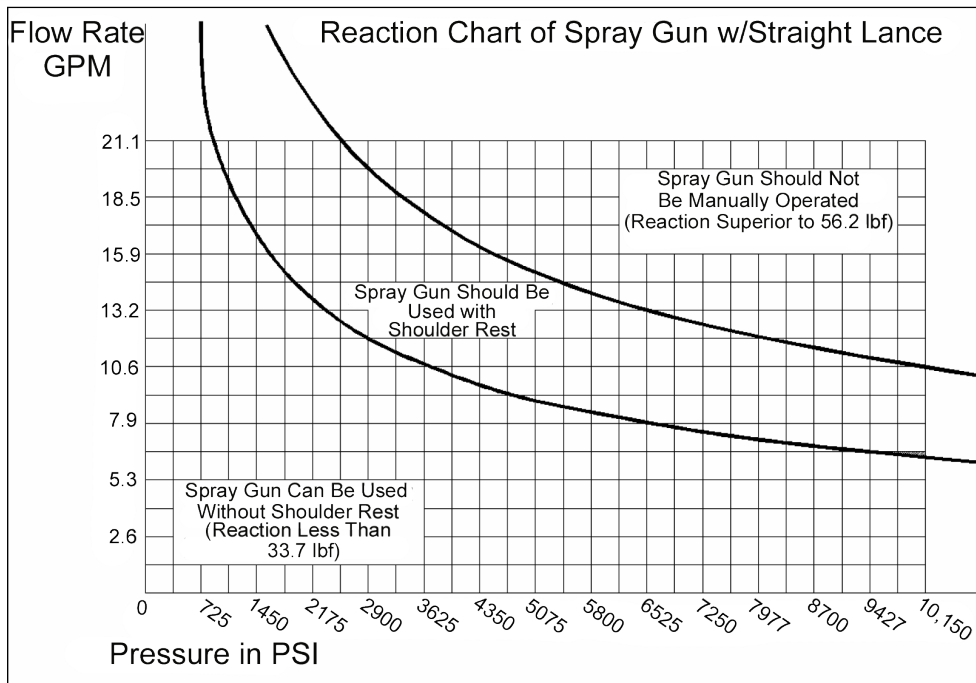
PROBLEMS AND SOLUTIONS

| PROBLEMS | PROBABLE CAUSES | SOLUTIONS |
|---|---|---|
| Leakage from the nozzle side of the gun | Presence of impurities Gun seat worn out | Clean Replace the seat |
| Leakages from the seals | Seals worn out | Replace the seals |
| The trigger opens up with difficulty | The pressure inside the circuit is too high | Check the bypass valve and adjust it if necessary |

DIMENSIONS - mm (in)



* **Attention:** in order to prevent any risk of instability due to pressure spikes, check the above chart carefully!



GIANT

Performance Under Pressure

Giant Industries, Inc.

900 N. Westwood Ave., Toledo, OH 43607

419-531-4600 Fax: 419-531-6836

www.giantpumps.com

© Copyright 2019 Giant Industries, Inc.