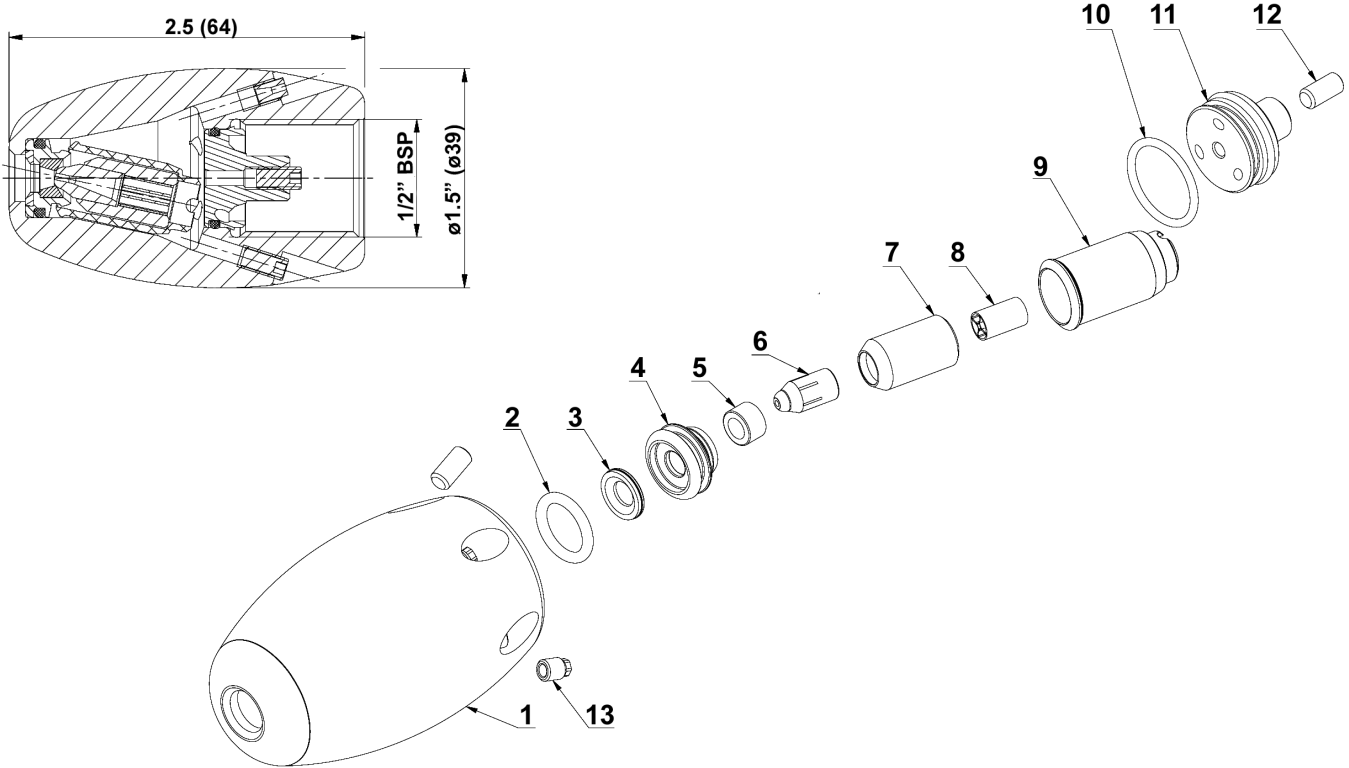


Series 23820-08

Sewer Cleaning Turbo Nozzle



Operating Conditions

| | U.S | (Metric) |
|-----------------------------|-----------|------------|
| Maximum Flow (23820-08-69): | 18.2 GPM | (69 L/min) |
| Maximum Flow (23820-08-95): | 25.1 GPM | (95 L/min) |
| Maximum Pressure: | 4350 PSI | (300 bar) |
| Spray Angle to Front: | | 24° |
| Spray Angle to Back: | | 40° |
| Maximum Temperature: | 195 °F | (90 °C) |
| Bearing: | | Ceramic |
| Nozzle: | | Ceramic |
| Weight: | 0.7 lbs. | (300 g) |
| For Pipe Diameter: | 2.4" | (60 mm) |
| Connection: | 1/2" FBSP | |

Parts List

| Item | Part No. | Description | Qty |
|------|----------|--------------------------|-----|
| 1 | | Housing | 1 |
| 2 | | O-Ring (10x2-90 shore) | 1 |
| 3 | | Brass Disc | 1 |
| 4 | | Bearing | 1 |
| 5 | | Ceramic Bearing | 1 |
| 6 | | Ceramic Nozzle | 1 |
| 7 | | Rotor Housing | 1 |
| 8 | | Straightener | 1 |
| 9 | | Nozzle Housing | 1 |
| 10 | | O-Ring (12x1.5-70 shore) | 1 |
| 11 | | Channel Fitting | 1 |
| 12 | | Set Screw, M4x8 | ?* |
| 13 | | Ceramic Nozzle, M2x1.2mm | ?* |

*Quantity varies based on flow and pressure

GIANT

Performance Under Pressure

Giant Industries, Inc.

900 N. Westwood Ave.

Toledo, Ohio 43607

PHONE: 419-531-4600

FAX: 419-531-6836

www.giantpumps.com

© Copyright 2019 Giant Industries, Inc.



Repair Kit - 09780-XX

Included in kit: parts 2-9

Note: When ordering a nozzle, determine the desired flow and pressure and the correct inserts (13) will be used in the nozzle.