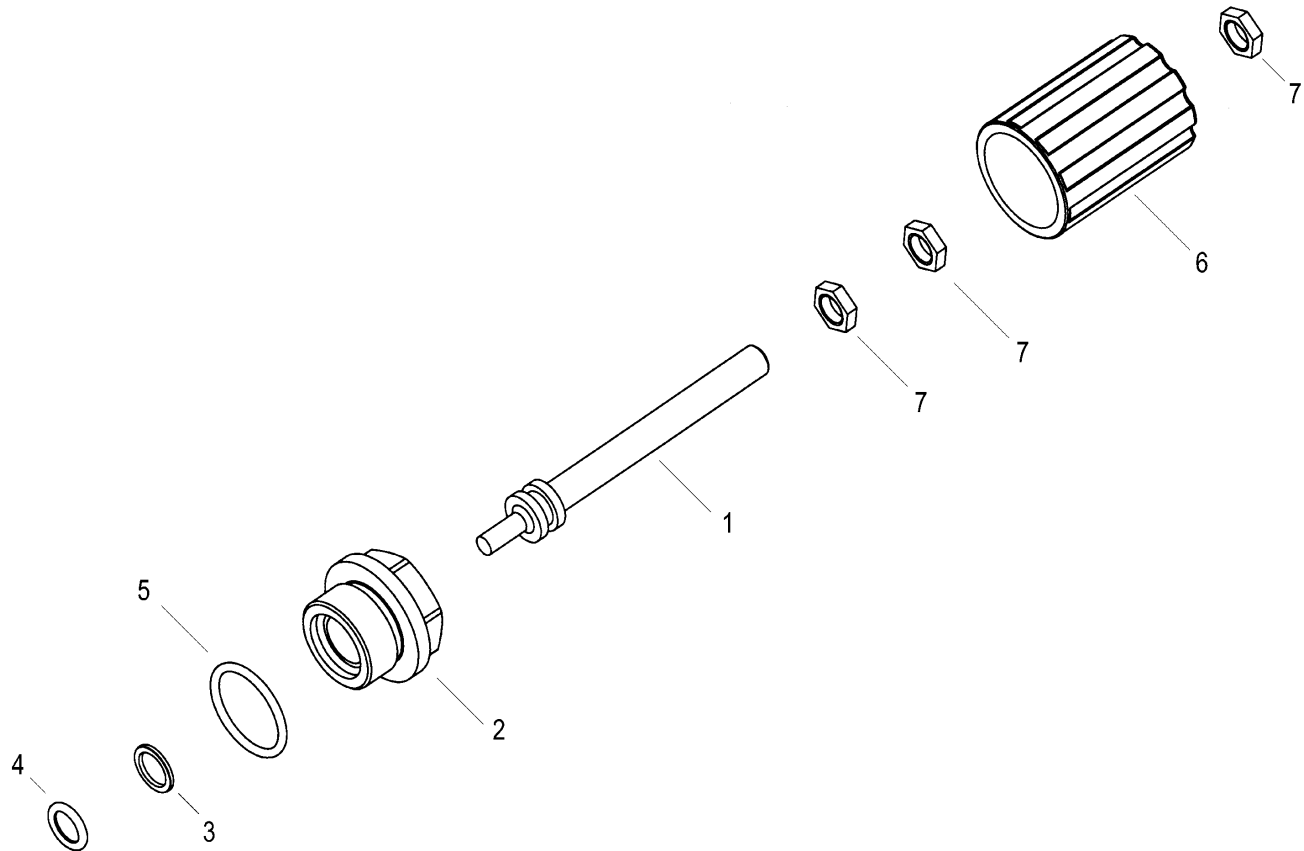


Model 22744

Pulsator Valve

FOR USE ON P420HP,
P422HP, P423HP, P425HP,
P426HP, P470 and P490



Item	Part #	Description	Qty
1	04515	Pulsator Rod	1
2	04516	Pulsator Cap	1
3	08324	Back-up Ring	1
4	03001	O-Ring	1
5	PF-9500-16	Seal Ring	1
6	03796	Handwheel	1
7	12320	Limiting Nut	3

GIANT

Performance Under Pressure
Giant Industries, Inc.

900 N. Westwood Ave.

Toledo, Ohio 43607

(419) 531-4600

FAX (419) 531-6836

www.giantpumps.com

© Copyright 2025 Giant Industries, Inc.

08/25 22744.INDD

INSTALLATION INSTRUCTIONS

22744 Pulsator Valve

For use on P400HP Series, P470 and P490 pumps

- 1). Remove center inlet valve plug from the front of the pump manifold.
- 2). Adjust the hand wheel (6) on the pulsator until it is all the way out by turning it counter clockwise. (Note: the handwheel will stop when it is all the way out.)
- 3). Install the pulsator assembly into the center inlet valve port and tighten with a 27 mm wrench.

OPERATING INSTRUCTIONS

- 1). To use the pump as a pulsating pump, turn the handwheel (6) clockwise until it is tight.
- 2). To use the pump as a pressure washer, turn the hand wheel counterclockwise until it stops.



WARNING: This product might contain a chemical known to the State of California to cause cancer, and birth defects or other reproductive harm.
For more information go to www.P65Warnings.ca.gov