



Industrial **Pumps** PERFORMANCE UNDER PRESSURE

900 N. Westwood Ave. Toledo, OH 43607
ph 800-633-4565 fax 419-531-6836

GIANT

Industrial Pumps

[Machined to Perfection]

High pressure water use continues to expand into emerging markets. Your growth depends on providing a quality product with the engineering to withstand the harshest conditions. With a German/American background, Giant's corrosion resistant line pumps not only meets your needs, but they provide solutions that help your company grow.

What's Unique about Giant's pumps?

The gear end of Giant's industrial pumps have been built to last for thousands of hours of operation. Giant continues to service pumps that have been in the field for over twenty years. For deep-forged (not aluminum) crankshafts (instead of machined barstock) to bronze connecting rods and high polish finish on solid ceramic plungers, Giant's pumps help assure years of smooth operation and less wear on fluid end components.

Why Giant's Fluid End lasts so long?

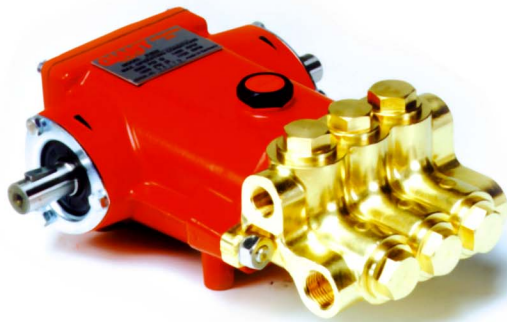
It's important that you're not always changing fluid end components in the field. That's why the internal fluid end parts are constructed of 316 duplex stainless steel; and the elastomers are manufactured to provide you with the most dependable and longest lasting fluid end life in the industry. Depending on conditions, Giant's fluid end may be constructed of aluminum-bronze-nickel, 303 or 316 stainless steel, duplex steel or titanium.

Why Giant?

Take a look at the pumps on the following pages. Anyone can supply flow and pressure. We want your experience with reverse osmosis pumps to be rewarding for you. You will know you've made the right choice with a Giant pump.

Thank you for your interest.
Your Giant Team.

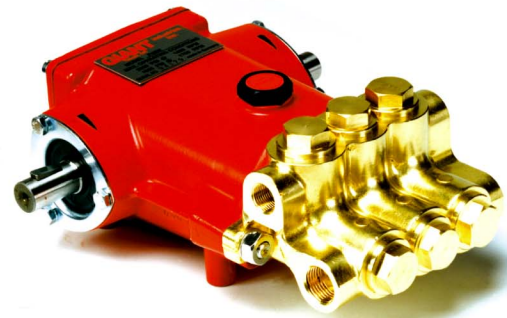
PERFORMANCE
UNDER
PRESSURE



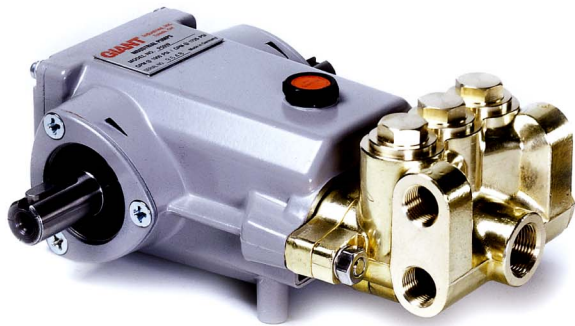
P46 Pumps
3.9 GPM @ 2175 PSI
1420 RPM
6.0 BHP



P55/56 Pumps
P55 4.9 GPM @ 2320 PSI
P56W 6.1 GPM @ 1885 PSI
Up to 1420 RPM
7.9 BHP



P57 Pumps
1.4 GPM @ 6500 PSI
1420 RPM
6.2 BHP



P54 Pump
4.0 GPM @ 4050 PSI
1450 RPM
11.5 BHP

P58 Pump
5.5 GPM @ 3500 PSI
1450 RPM
13.1 BHP

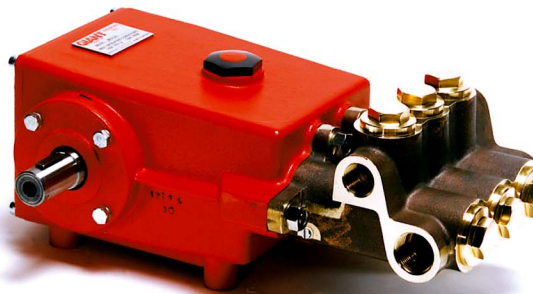
P59 Pump
7.5 GPM @ 1885 PSI
1450 RPM
10.1 BHP



P400 Series
Up to 13 GPM
Up to 7250 PSI
Up to 1460 RPM
18.9 BHP



SP100 Pump
11.2 GPM @ 1900 PSI
Up to 1420 RPM
14.6 BHP

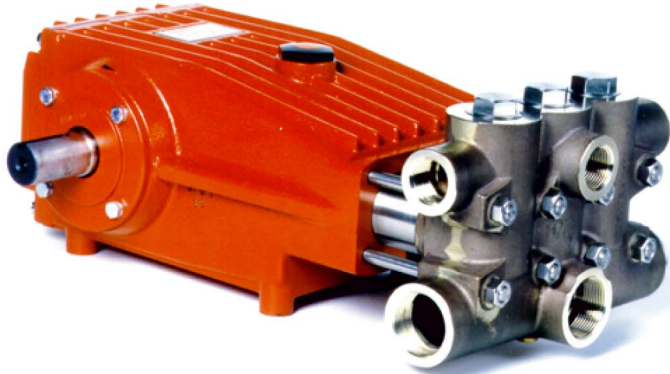


MP Series
Up to 15.2 GPM
Up to 3600 PSI
Up to 1420 RPM
21.9 BHP

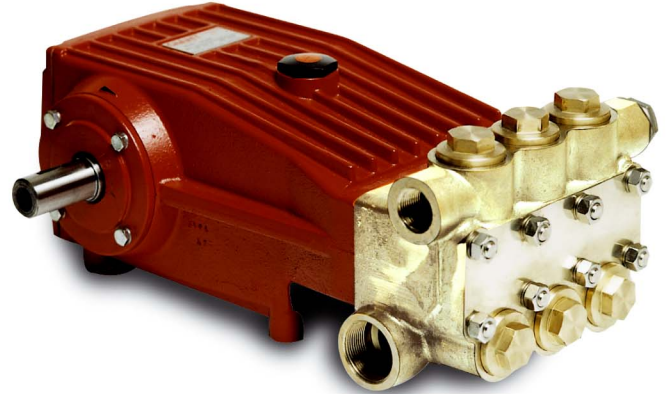


LP Series

Up to 35 GPM @ Up to 15,000 PSI
Up to 40 BHP



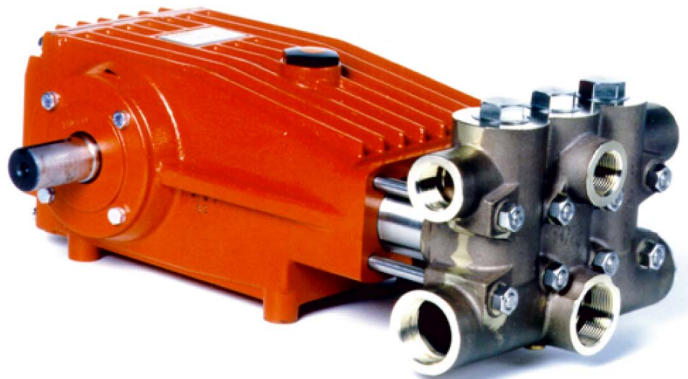
LP250
26 GPM @ 2200 PSI



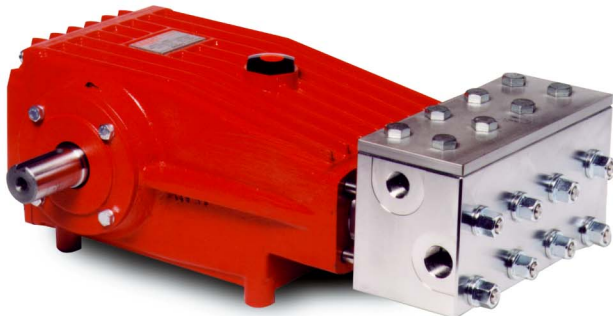
LP122A/LP123
35 GPM @ 1300 PSI



LP301/LP600
LP301- 14.1 GPM @ 4000 PSI
LP 600- 9.7 GPM @ 6000 PSI



LP400
15.1 GPM @ 3600 PSI



LP700
7.9 GPM @ 7250 PSI



LP1000
3.0 GPM @ 15,000 PSI

GP Series

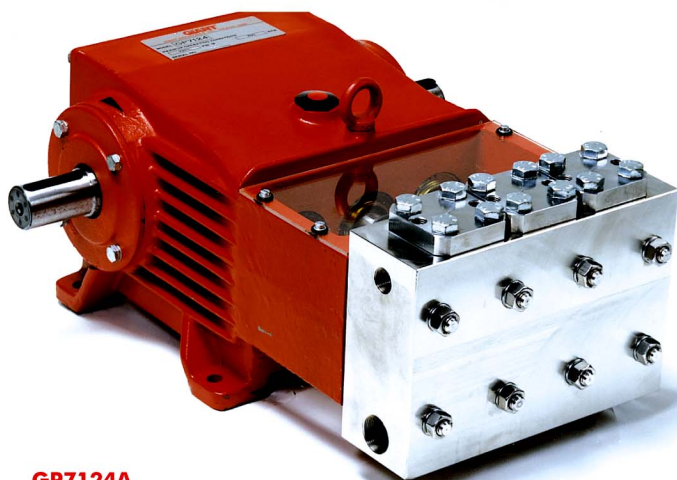
Up to 105 GPM @ Up to 10,000 PSI
UP to 150 BHP



GP5136
35 GPM @ 2200 PSI

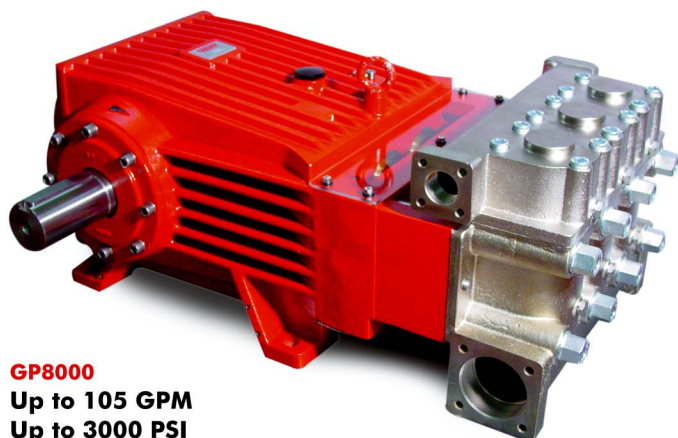


GP7255A
66.0 GPM @ 1500 PSI



GP7124A
12.6 GPM @ 7250 PSI

GP7122
10 GPM @ 10,000 PSI



GP8000
Up to 105 GPM
Up to 3000 PSI

Industrial Pumps

PERFORMANCE
**UNDER
PRESSURE**
GIANT

Corrosion Resistant Pumps

[Aluminum Bronz-Nickel Manifolds & 316 S.S. internal wet end parts]

Model	Max.GPM	Max.PSI	Max.RPM	Req'd BHP
P221AR-3100	2.3	2000	1750	3.2
P217A-3100	3.4	2000	3450	4.7
P218A-3100	3.4	2000	1750	4.7
P219A-3100	4.2	2000	1750	5.8
P220A-3100	4.7	2000	1750	6.4
P420A-3100	13.0	1700	1460	15.2
P440-3100	6.6	4000	1460	15.2
P450-3100	5.5	5000	1460	15.2
MP4130-3100	15.2	1900	1085	20.0
LP122A-3100	39.0	1300	885	34.5
GP7155A-3100	66.0	1500	700	70.5

■ 3100 Designates Nickle Aluminum Bronze-Manifold



LP122A-3100

[3.6 S.S. Manifolds and internal wet end parts]

Model	Max.GPM	Max.PSI	Max.RPM	Req'd BHP
P217A-5100	3.4	2000	3450	4.7
P219A-5100	4.2	2000	1750	5.8
P220A-5100	4.7	2000	1750	6.4
P56-5100	7.1	2100	1655	10.2
P420A-5100	13.0	1700	1460	15.2
LP121A-5100	36.0	1300	885	32.1
GP5145-5100	43.3	1500	750	44.8
GP7155A-5100	66.0	1500	700	70.5

■ 5100 Designates 316 S.S. Manifold



P200-5100 Series



P56-5100 Series



P420-5100 Series

Industrial Power Pack

Giant's rugged Industrial Power Paks have been designed to provide you with the durability you require. Your return on investment comes with each use. Built to your specifications the Industrial Power Pak provides liquid power for every application.

Specifications

Drives: Gasoline, Diesel, Natural Gas

Pumps: Up to 84.5 GPM @ Up to 15,000 PSI

Frame: Galvanized, Stainless Steel

Accessories: You specify

Availability: Production timed to your requirements.

Electric

Standard units use the Giant pump with an industrial grade motor. Belts and pulleys convey the motor's energy to the pump while the self-adjusting motor mount provides maximum power for continuous flow. The Giant Power Pack gives you the flexibility to meet a variety of applications while providing a cost effective and time saving source for your high pressure pump needs.

Specifications

Motors: 3HP-30HP

Pumps: Up to 84.5 GPM @ Up to 15,000 PSI

Frame: Galvanized and Stainless Steel

Accessories: Unloader/Regulator/S.S. Belt Guard, Pulleys, V-belts, Bushings

Availability: Production timed to your requirements

Power Pack

Various Giant Triplex Pumps and Pump Units Available

Working Pressure	up to 15,000 PSi (1000 bar)
Delivery Rate	up to 105 GPM (400 L/min)
Performance	up to 150 hp (110 kW)
Type of Drive	Electrical, Hydraulic, Combustion Engine
Power Transmission	Direct Coupling, Belt Drive, Reduction (Step-Down) Gear
Fluid Media	Water media such as: Drinking water, Sanitary water, Desalinated water, Water for dialysis, Sea water, Brackish water, Dump site leakage water, Industrial waste water, Emulsions (cooling & lubricating agents) Fuels, Oils, Alcohols, Acids, Caustic solutions, Fruits juices, Concentrates, Beer, Wine, Milk, Liquefied CO ₂ (at 13 F (-25 C) or under pre-pressure)
Media Temperatures	from -13 F (-25 C) to +221 F (+105 C) °
Materials (media-wetted)	Casings, Valves, Plungers, Nickel-plated spheroidal cast iron, Special brass bronze, Nickel-Aluminum-Bronze, Stainless Steel 1.4305 (AISI 303) Stainless Steel 1.4571 (AISI 316), Duplex Steel, Hastelloy, Tungsten Carbide Oxide Ceramic
Seals	NBR, Viton, Teflon, Kalrez

Various Giant Triplex Pumps and Pump Units Available

Reverse Osmosis	Water for dialysis, Sea water, Dump site leakage water, Industrial waste water, Beverages
High-Pressure Cleaning	High pressure cleaners (mobile/stationary), Pre-wash units, Tire/wheel washers, Pre-spray wash bays, Floor washers, Sewer cleaning, Facade cleaning, Industrial cleaning systems, Foodstuff cleaning systems.
Air-Humidification	Live-stock, Plant breeding, Printing and paper industry, Tunnelling, Mining, Fire extinguishing Plants, Anti-Static Units
Polyurethane	Block Foam (Fully Desalinated Water)
Foam Production	Molded Foam (Isocyanate, Amine, CO ₂)
Cooling/Lubricating Systems	Machine and plant building
Water Hydraulics	Nuclear power stations, Industrial plants
Boiler Feeding, Earth Boring, Well Sanitation, & many more	