

Models

25170-1.8/25170-2.1/25170-2.3

25170-1.8A/25170-2.1A/25170-2.3A

CHEMICAL INJECTORS

Chemical Injector Rating with an Original Orifice			
Model Number (Nozzle Size)	Desired Flow	Orifice Size	Max Chemical Draw*
	(GPM)	(mm)	(oz/min)
25170-1.8(A) (#8)	1	1.8	50
25170-1.8(A) (#8)	3	1.8	53
25170-2.1(A) (#11)	3	2.1	56
25170-2.1(A) (#11)	5	2.1	58
25170-2.3(A) (#13)	5	2.3	50
25170-2.3(A) (#13)	8	2.3	56

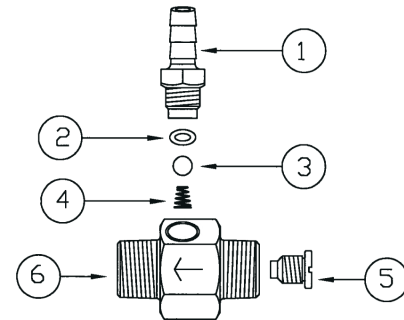
*Based on 50 feet of 1/2" hose, longer hose will affect the amount of the draw.

OPERATING CONDITIONS

Maximum Pressure:	4000 PSI
Maximum Temperature:	194 °F
Inlet Port:	3/8" MNPT
Outlet Port:	3/8" MNPT
Orifice Size (25170-1.8A):	1.8 mm (#8)
Orifice Size (25170-2.1A):	2.1 mm (#11)
Orifice Size (25170-2.3A):	2.3 mm (#13)

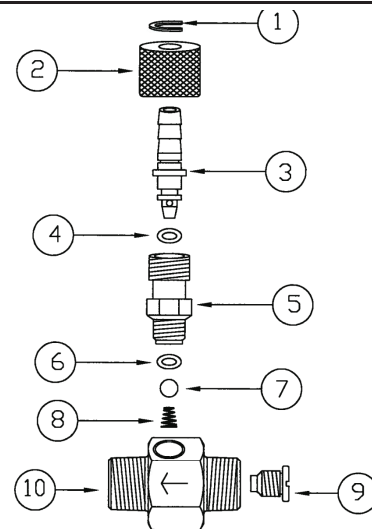
Fixed Injectors

Item #	Part #	Description	Qty
1	12517	Hose Barb	1
2	12516-0001	O-Ring, Viton	1
3	23010-0100	7/32" 316 SS Ball	1
4	23009-0700	Spring, Hastelloy	1
5	06727-0400	Orifice, SS (25170-1.8)	1
5	06728-0400	Orifice, SS (25170-2.1)	1
5	06729-0400	Orifice, SS (25170-2.3)	1
6	06726	Injector Body	1



Adjustable Injectors

Item #	Part#	Description	Qty
1	23405	Retaining Clip	1
2	23104	Adjusting Screw	1
3	23102	Hose Barb	1
4	02009-0001	O-Ring	1
5	23103	Valve Seat	1
6	12516-0001	O-Ring	1
7	23010-0100	S.S. Ball	1
8	23009-0700	Spring, Hastelloy	1
9	06727-0400	Orifice, SS (25170-1.8A)	1
9	06728-0400	Orifice, SS (25170-2.1A)	1
9	06729-0400	Orifice, SS (25170-2.3A)	1
10	06726	Body	1



WARNING: This product might contain a chemical known to the State of California to cause cancer, and birth defects or other reproductive harm.

For more information go to www.P65Warnings.ca.gov

GIANT

GIANT INDUSTRIES, INC.

900 N. Westwood Ave. Toledo, Ohio 43607

(419)-531-4600 - FAX: (419)-531-6836 - www.giantpumps.com

Performance Under Pressure © Copyright 2023 Giant Industries, Inc.

11/23 25170.indd