

# Models 25160 & 25165

Pressure  
Regulator  
Valve

## Operating Conditions

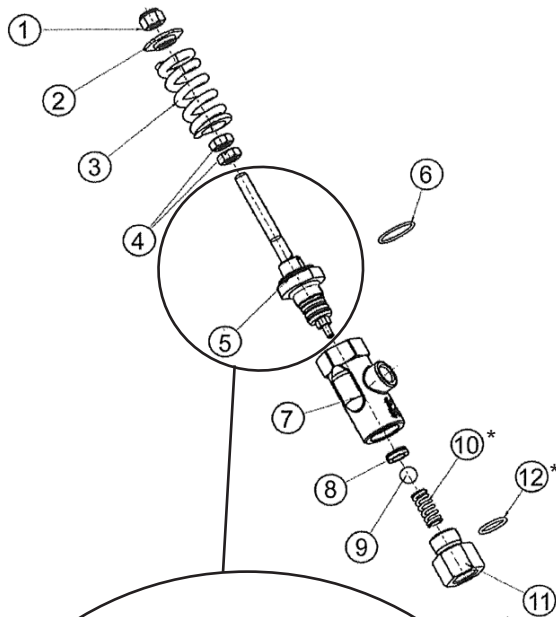
### 25160

	<u>U.S.</u>	<u>Metric</u>
Maximum Flow: .....	10.6 GPM.....	40.0 L/min
Maximum Pressure:.....	3990 PSI.....	275 Bar
Maximum Temp.: .....	194° F .....	90° C
Inlet Port: .....	3/8"	
Outlet Port: .....	1/4"	

### 25165

	<u>U.S.</u>	<u>Metric</u>
Maximum Flow: .....	10.6 GPM.....	40.0 L/min
Maximum Pressure:.....	1450 PSI.....	100 Bar
Maximum Temp.: .....	194° F .....	90° C
Inlet Port: .....	3/8"	
Outlet Port: .....	1/4"	

## Exploded View and Spare Parts



Exploded View of Item #5

<u>Item</u>	<u>Part #</u>	<u>Description</u>	<u>Qty.</u>
1	05485	Nut	1
2	05486	Disk	1
3	05487	Spring (25160)	1
3	04125	Spring (25165)	1
4	05488	Jam Nuts	2
5**	05489**	Stem Assembly	1
6	05490	(Blue) O-Ring (25160)	1
6	04126	(Yellow) O-Ring (25165)	1
7	05491	Valve Body	1
8	05492	Seat S.S.	1
9	05493	Ball	1
10*	05494	Spring	1
11	05495	Inlet Nipple	1
12*	05496	O-Ring	1

\*\* Item #5 Spare Parts List Below

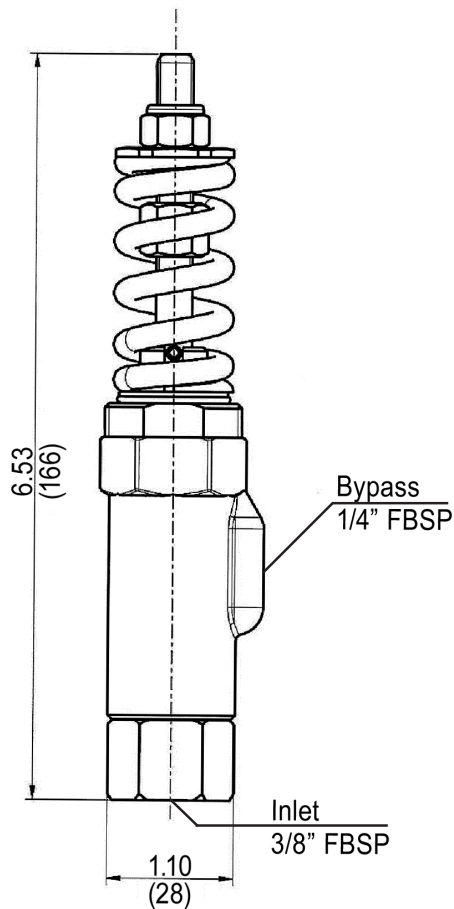
<u>Item</u>	<u>Part #</u>	<u>Description</u>	<u>Qty.</u>
13	05497	Stem	1
14	05498	Nipple	1
15*	05499	O-Ring	1
16*	05500	Back-up Ring	1
17*	05501	O-Ring	1
18	05502	O-Ring	1
19	05503	Retaining Ring	1
20*	05504	Back-up Ring	1
21*	05505	O-Ring	1
22*	05506	Back-up Ring	1
23	05507	Nut	1
24	05508	Pin	1

## Repair Kit

Kit Number  
09740

\*Parts Included in Kit  
10, 12, 15, 16, 17, 20, 21, 22

## Valve Dimensions - mm (in)



## Operation

- Read the manual carefully before operating. Giant Industries is not liable for damage resulting from improper operation or handling of this product.
- Adjust the spring (3) tension via the nut (1).
- Installation and maintenance must be performed by qualified personnel.
- The valve is only for use with clean, fresh water with mild detergents. Acids, alkalines, or abrasive fluids may not be used unless approval in writing is obtained before operation from Giant Industries, Inc.
- The valve is to be mounted downstream of the bypass valve, before a boiler.
- The valve is to be mounted downstream of the bypass valve, before a boiler.
- Finally, remember that high pressure operation in a pump system has many advantages. But, if it is used carelessly and without regard to its potential hazards, it can cause serious injury.

## Maintenance

- Only use original Giant Industries spare parts (see first page for valve repair kit) for maintenance work.
- Before maintenance, be sure that all pressure is relieved from the valve.
- Maintenance should be carried out based on the frequency of use of the machine the valve is mounted on. Be sure to replace the seals and spring as necessary.
- For proper installation, observe the exploded view shown on the first page.
- Before reassembly, lubricate all seals with silicone grease.

### Instructions:

1. Remove nut (1), disc (2), and spring (3).
2. Remove stem assembly (5).
3. Remove inlet nipple (11), o-ring (12), spring (10), ball (9), and seat (8). If seat is worn and has to be replaced, put an easy out in seat and remove seat.
4. Remove nut (23) on stem (13), and remove retaining ring (19).
5. Remove the stem (13) from nipple, then remove back-up ring (16) and o-ring (17) from nipple.
6. Check the O-ring (18) on stem (13), and replace if necessary.



Giant Industries, Inc.  
900 N. Westwood Ave.  
Toledo, OH 43607  
419-531-4600  
419-531-6836 Fax  
www.giantpumps.com