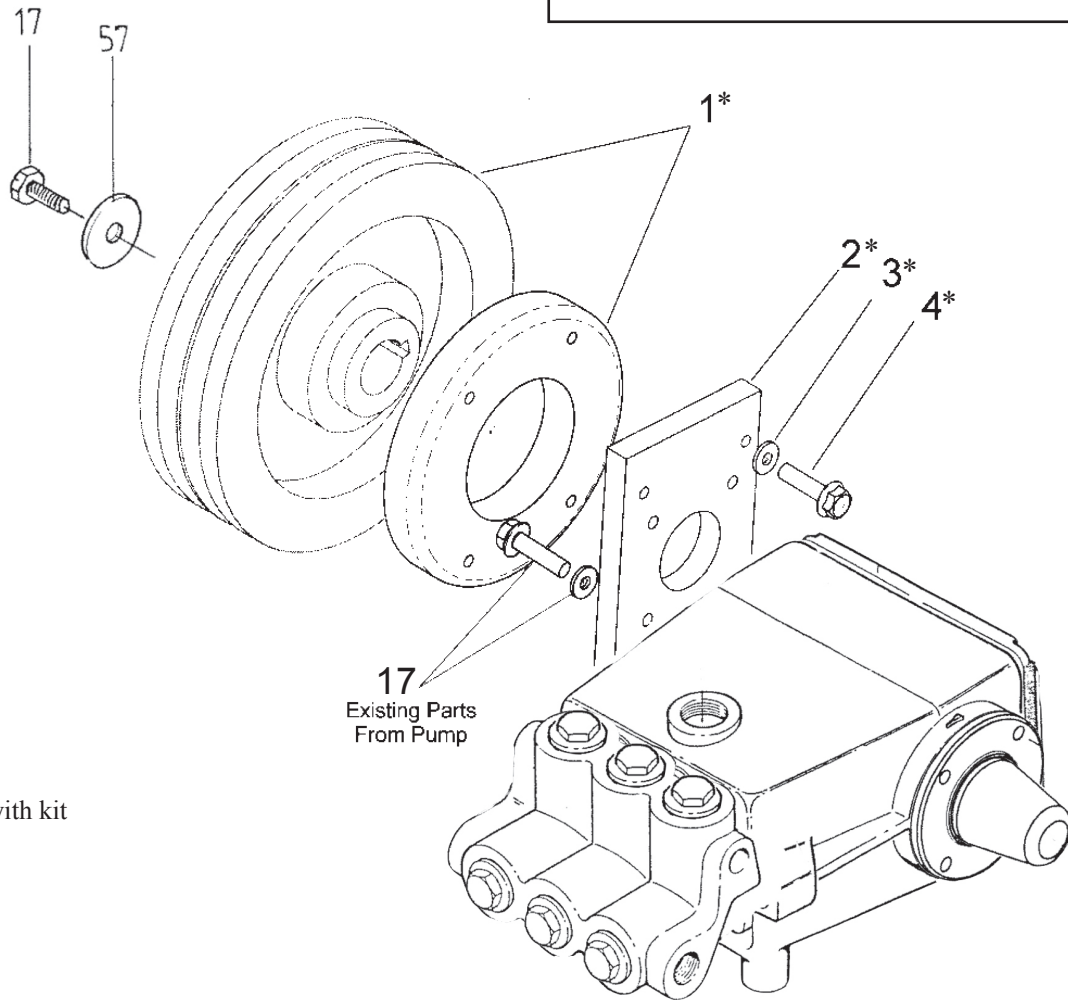


# Instructions for 23960 clutch assembly (For MP4120 Series pumps, 28mm, 2 groove)

Parts			
Item #	Part #	Description	Qty
1	06819	28mm Clutch	1
2	06993-MP	Mounting Flange	1
3	01176-2	Lock Washer	4
4	01196	Socket Hex Head Cap Screw	4



\* Parts included with kit

## Assembly Instructions

1. Remove the four screws (17) for the bearing cover (14) on the pump.
2. Place the mounting plate (2) over the crankshaft and secure with existing bearing cover screws (17).
3. Secure clutch magnet (1) to mounting flange by sliding clutch magnet over crankshaft and attaching with screws (4) and lock washer (3).
4. Slide clutch sheave onto pump and secure with screw with lock washer (57) and retaining washer (17).
5. Attach lead wire to (+) or pressure flow switch as desired.
6. Attach "5V section" belt of required length
7. Engage and disengage the clutch several times to ensure it is functioning properly. If full torque will be required from the pump immediately, the pump should be properly burnished. (Burnishing involves cycling the clutch at a reduced speed not more than 4 times per minute so the surfaces can mate together. In most applications, 20-50 cycles are required for burnishing.)

**NOTE:** If an operation manual is needed for the above pump models, please consult your local distributor.