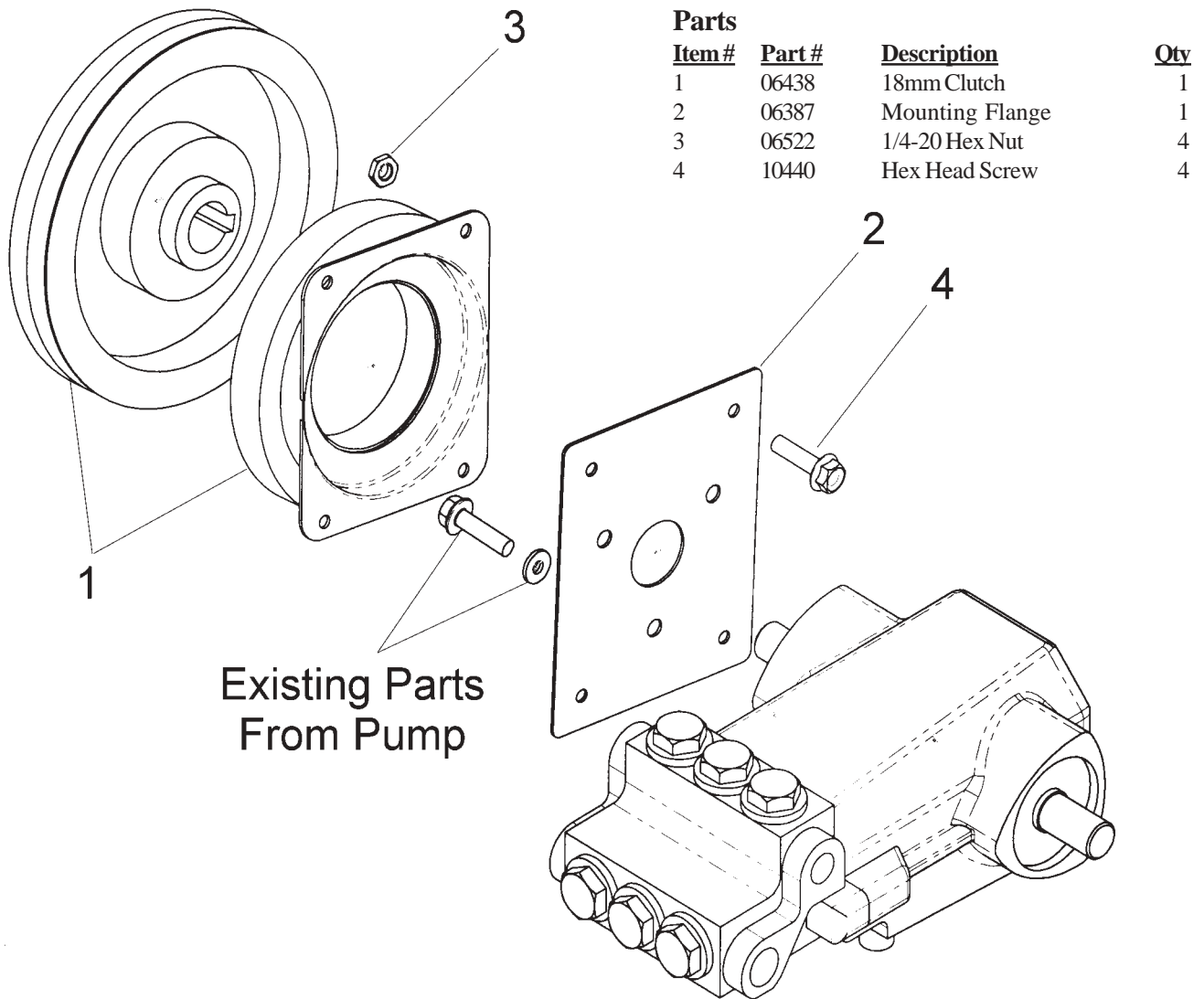


Instructions for 23930 clutch assembly (For P46 pump)



Assembly Instructions

1. Remove the screws from the bearing cover on the pump with a 10mm hex wrench.
2. Place the mounting plate (2) over the crankshaft and secure with the existing bearing cover screws.
3. Secure clutch (1) to mounting flange by sliding clutch over crankshaft and attaching with screws (4) and hex nuts (3). Secure set screw on pulley shaft.
4. Attach lead wire to (+) or pressure flow switch as desired.
5. Attach "B section" belt of required length
6. Engage and disengage the clutch several times to ensure it is functioning properly. If full torque will be required from the pump immediately, the pump should be properly burnished. (Burnishing involves cycling the clutch at a reduced speed not more than 4 times per minute so the surfaces can mate together. In most applications, 20-50 cycles are required for burnishing.)

NOTE: If an operation manual is needed for the above pump models, please consult your local distributor.