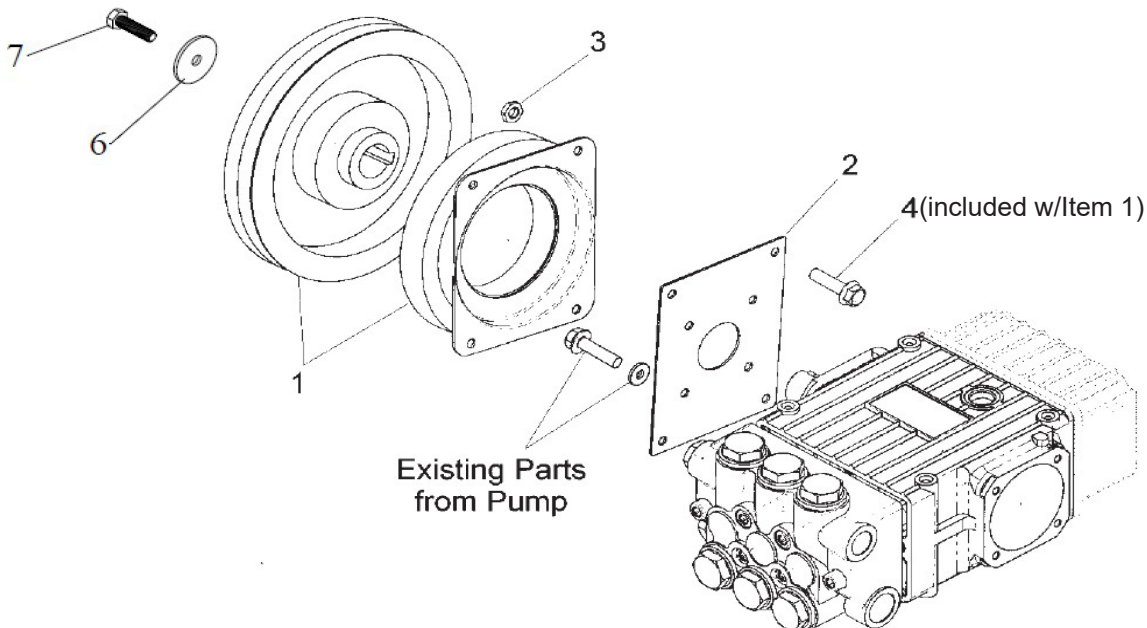


Instructions for 23910 clutch assembly (For P200 and P300 Series Pumps)

Parts List

Item #	Part #	Description	Qty
1	06429*	24mm Clutch Assembly	1
2	06521	Mounting Flange	1
3	06522	1/4-20 Hex Nut	4
6	05626	Fender Washer	1
7	08198	M8-1.25 Screw	1

*Includes 4 x Item 4



Assembly and Installation Instructions

1. Remove the bearing cover on the pump with a 10 mm hex wrench.
2. Place the mounting plate (2) over the crankshaft and secure with existing bearing cover screws.
3. Secure clutch (1) to mounting flange by sliding clutch over crankshaft and attaching with screws (4) and hex nuts (3). Secure set screw on pulley shaft.
4. Thread the M8-1.25 screw (7) and Fender Washer (6) over the hub of the clutch (1) into the crankshaft of the pump.
5. Attach lead wire to (+) or pressure flow / switch as desired.
6. Attach "A or AX section" belt of required length
7. Engage and disengage the clutch several times to ensure it is functioning properly. If full torque will be required from the pump immediately, the clutch should be properly burnished. (Burnishing involves cycling the clutch at a reduced speed not more than 4 times per minute so the surfaces can mate together. In most applications, 20-50 cycles are required for burnishing.)



WARNING: This product might contain a chemical known to the State of California to cause cancer, and birth defects or other reproductive harm.
For more information go to www.P65Warnings.ca.gov

NOTE: If an operation manual is needed for the above pump models, please consult your local distributor.