

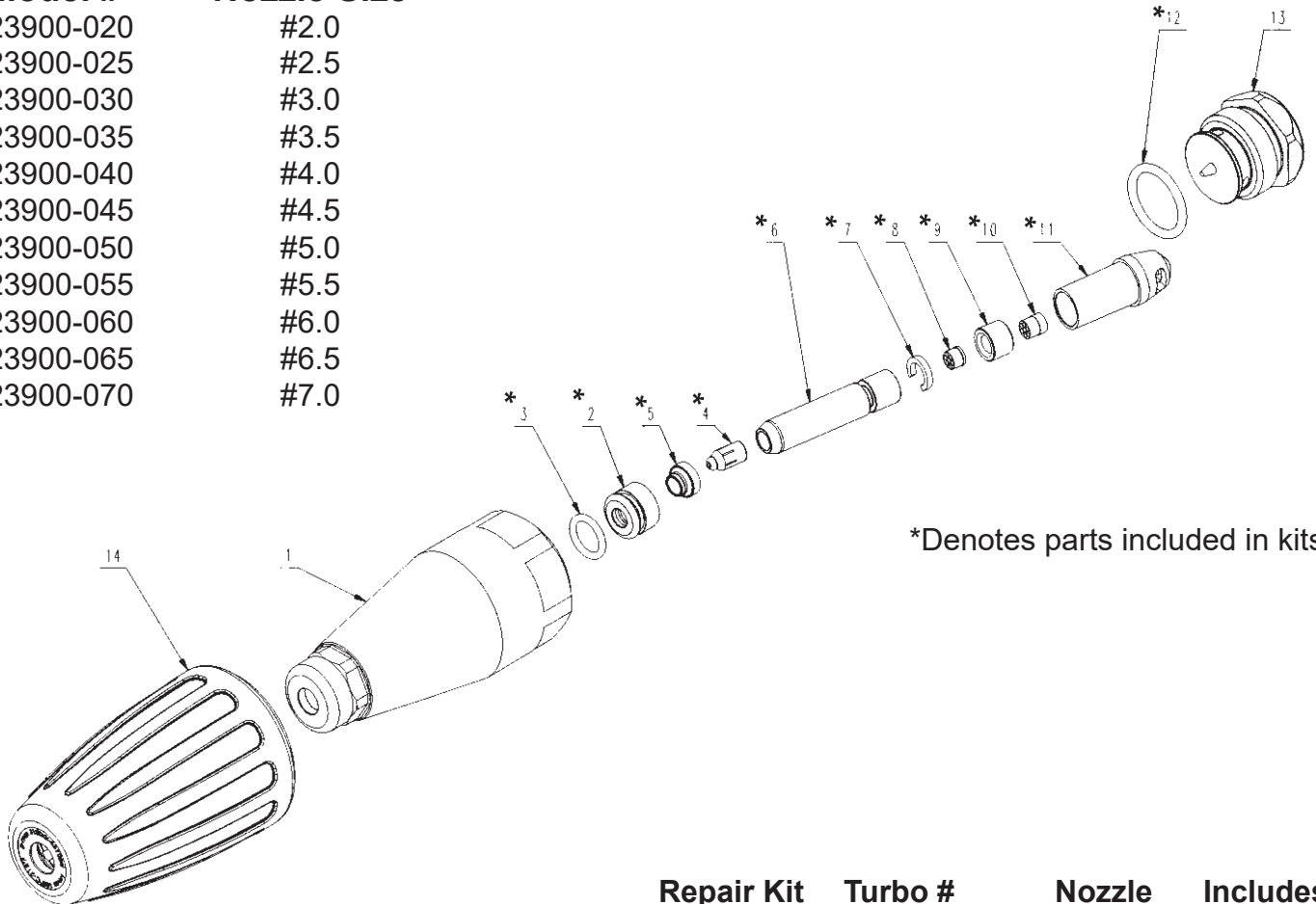
# Series 23900

# Turbo Nozzle



TM

Model #	Nozzle Size
23900-020	#2.0
23900-025	#2.5
23900-030	#3.0
23900-035	#3.5
23900-040	#4.0
23900-045	#4.5
23900-050	#5.0
23900-055	#5.5
23900-060	#6.0
23900-065	#6.5
23900-070	#7.0



\*Denotes parts included in kits

## Operating Conditions

<b>Maximum Flow:</b>	8.0 GPM (30.3 LPM)
<b>Maximum Pressure:</b>	4500 PSI (310 Bar)
<b>Spray Angle:</b>	20°
<b>Bearing:</b>	Ceramic
<b>Nozzle:</b>	Ceramic
<b>Maximum Temperature:</b>	195 °F (95 °C)
<b>Weight:</b>	1lb. (0.45 kg)
<b>Length:</b>	3.9" (110 mm)
<b>Diameter:</b>	2" (50 mm)
<b>Connection:</b>	1/4" FBSP+

Repair Kit	Turbo #	Nozzle	Includes
09615-020	(23900-030)	#2.0	2-12
09615-025	(23900-030)	#2.5	2-12
09615-030	(23900-030)	#3.0	2-12
09615-035	(23900-035)	#3.5	2-12
09615-040	(23900-040)	#4.0	2-12
09615-045	(23900-045)	#4.5	2-12
09615-050	(23900-050)	#5.0	2-12
09615-055	(23900-055)	#5.5	2-12
09615-060	(23900-060)	#6.0	2-12
09615-065	(23900-065)	#6.5	2-12
09615-070	(23900-070)	#7.0	2-12

+ To convert from BSP to NPT threads you may order 06581 (1/4" MBSP x 1/4" FNPT) or 06581M (1/4" MBSPx1/4" MNPT)

## MAINTENANCE NOTICE:

If turbo will not spin, take unit apart and clean the nozzle.  
If turbo still will not spin, have an authorized distributor repair nozzle.

## 23900 Series TURBO LASER REPAIR INSTRUCTIONS

Before repairing the Turbo Laser, please note that items number 4 and 2 are not interchangeable with all nozzles.

- 1) Remove the cover (item 14) from the body (item 1). Using a 27mm wrench, remove the drive plug (item 13) from the body.
- 2) Replace the rotor assembly (items 4-11) and seat assembly (items 2-3).
- 3) Replace the drive plug o-ring (item 12).
- 4) Replace the drive plug (item 13) and cover (item 14). Lightly shake the Turbo Laser to ensure that the rotor assembly (4-11) has unimpaired movement.

**Note:** If the turbo nozzle is very dirty on the inside, we suggest the use of a turbo filter (p/n 22175).

### **MAINTENANCE NOTICE:**

If turbo will not spin, take unit apart and clean the nozzle. If turbo still will not spin, have an authorized distributor repair nozzle.



**WARNING:** This product might contain a chemical known to the State of California to cause cancer, and birth defects or other reproductive harm.  
For more information go to [www.P65Warnings.ca.gov](http://www.P65Warnings.ca.gov)

# **GIANT**

Performance Under Pressure  
**Giant Industries, Inc.**

900 N. Westwood Ave.

Toledo, Ohio 43607

PHONE: 419-531-4600

FAX: 419-531-6836

[www.giantpumps.com](http://www.giantpumps.com)