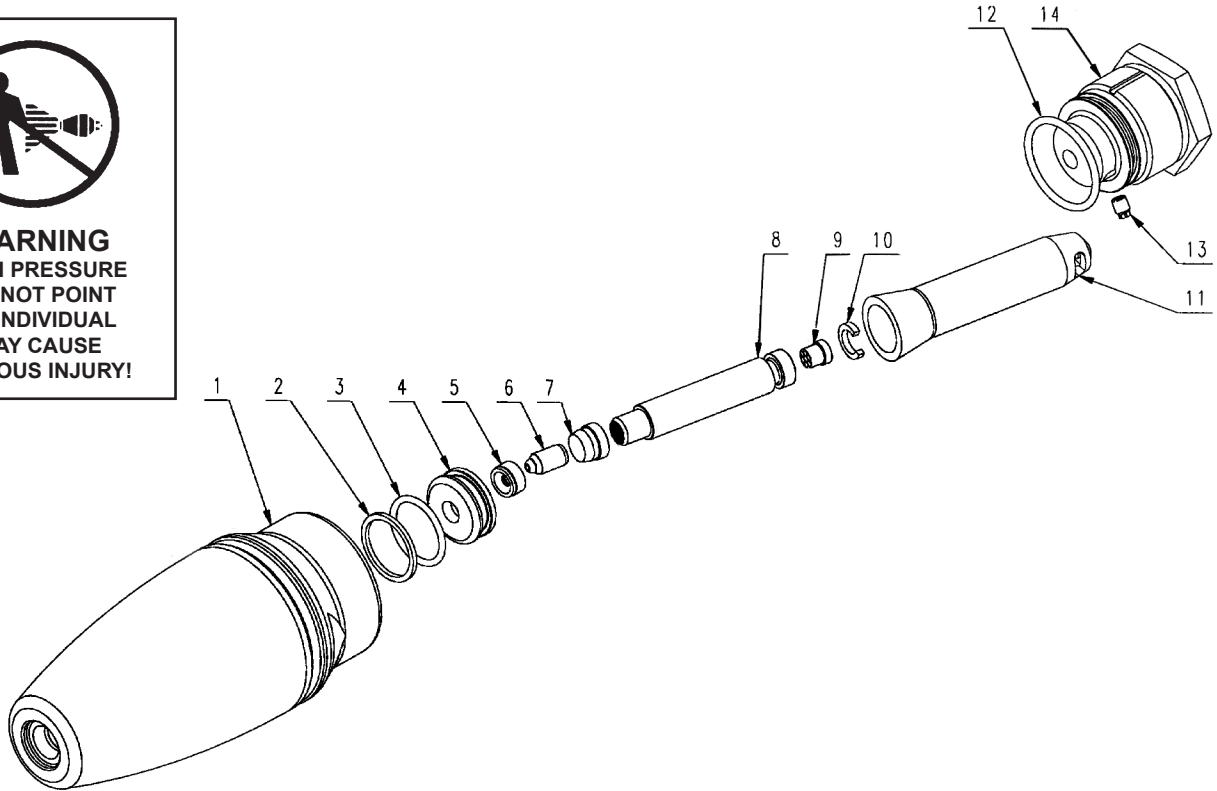


Series 23750

Turbo Nozzle



Model #	Repair Kits #	Nozzle Size
23750-2.0	09555-020	#2.0
23750-2.5	09555-025	#2.5
23750-3.0	09555-030	#3.0
23750-3.5	09555-035	#3.5
23750-4.0	09555-040	#4.0
23750-4.5	09555-045	#4.5
23750-5.0	09555-050	#5.0
23750-5.5	09555-055	#5.5
23750-6.0	09555-060	#6.0
23750-6.5	09555-065	#6.5
23750-7.0	09555-070	#7.0

NOTE: All kits include items 2-12

Operating Conditions		
	U.S	Metric
Maximum Flow:	16.2 GPM	61 L/Min
Maximum Pressure:	10,150 PSI	700 Bar
Spray Angle:	20°	
Maximum Temperature:	195 °F	90 °C
Connection:	1/4" FBSP	

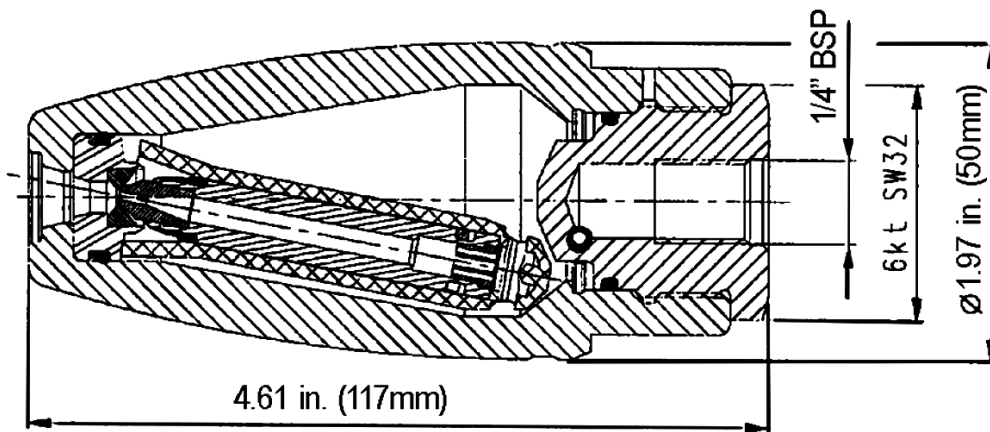
MAINTENANCE NOTICE:

If turbo will not spin, take unit apart and clean the nozzle. If turbo still will not spin, have an authorized distributor repair nozzle.

Repair Instructions

1. While holding the housing (1), remove the inlet plug (14).
2. Remove items 5-11 from the housing (1).
3. Remove the seat assembly (2-4) using a tapered-end device such as a wooden dowel. Replace with new seat assembly found in kit.
4. Place new rotor assembly items (5-11) into the housing (1).
5. Replace and secure the inlet plug (14) onto the housing (11). Gently shake nozzle to make sure the rotor assembly can move.

NOTE: If an operation manual is needed for the above pump models, please consult your local distributor.



WARNING: This product might contain a chemical known to the State of California to cause cancer, and birth defects or other reproductive harm. For more information go to www.P65Warnings.ca.gov