

# Model 23177-4000

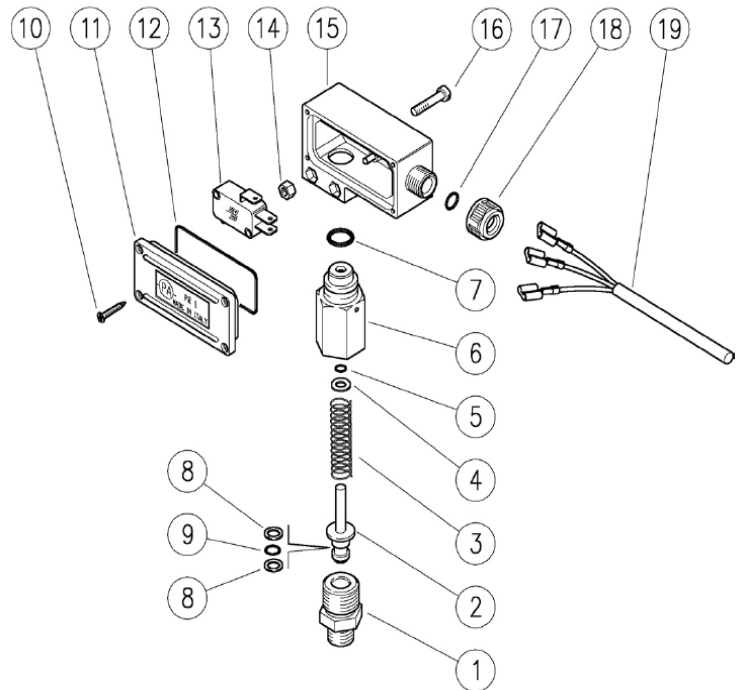
# Pressure Switch

## Parts List

Item	Part#	Description	Qty.
1	04095	Nipple	1
2	04096	Piston	1
3	08807	Spring	1
3	08808	Spring	1
4	08806	Washer	1
5*	08805	O-Ring	1
6	04097	Housing	1
7	08803	O-Ring	1
8*	08791	Back-Up Ring	2
9*	08584	O-Ring	1
10	04098	Screw	4
11	04099	Lid, Red	1
12	04100	O-Ring	1
13	08795	Microswitch	1
14	08642	Hexagon Nut	2
15	04101	Casing, Red	1
16	04102	Screw	2
17	14090	O-Ring	1
18	14049	Locknut for cable gland, Black	1
18	14091	Locknut for cable gland, Red	1
19	04103	Cable	1

\*denotes parts in repair kit

Repair Kit #	Includes Items
09180	5, 8, 9



## Operating Specifications:

The pressure switch signals the surpass of a pre-set pressure, through a piston, which operates a switch lever.

**Maximum Pressure:** 8700 PSI (600 Bar)

**Permissible Pressure:** 9570 PSI (660 Bar)

**Actuation Pressure:** 362 PSI (25 Bar)

**Maximum Temperature:** 194°F (90°C)\*

**Inlet Port:** 3/8" M BSP

**Weight:** 0.6 lbs.

\*The pressure switch is designed for a continuous use at a water temperature of 140°F (60°C), and can only withstand the maximum temperature for short periods of time.

## Electrical Specifications:

**Max. Rated Voltage:** 250V

**Breaking Switch:** 16 (A) - resistive load  
6 (A) - inductive load

**Cable Length:** 1200 mm  
Electric Wire - 3 x 1 mm

**Max. Amperage Cable:** 10 A

**Environment Temp.:** 167°F (75°C)

# INSTALLATION & OPERATING INSTRUCTIONS

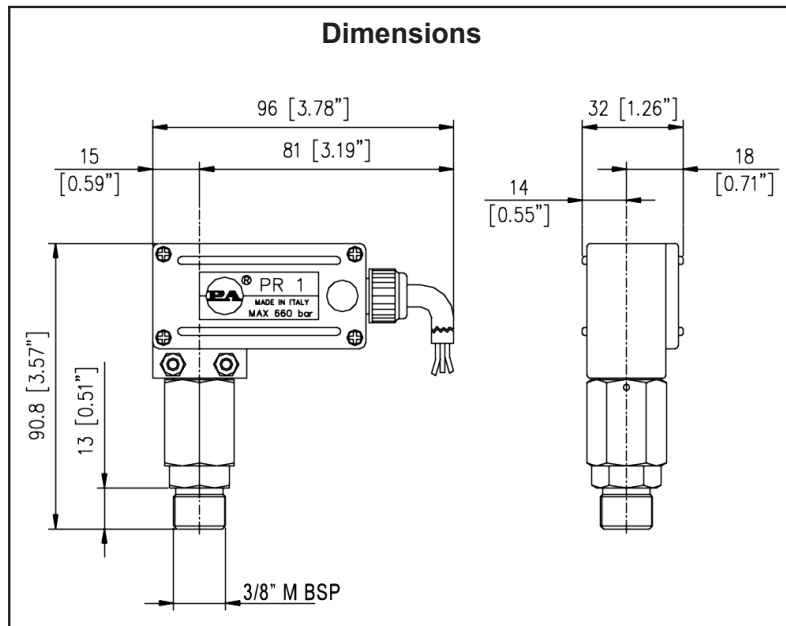
## Selection

Select the pressure switch suitable for the rated system pressure and on/off operations. Make sure that the operating current valve is below the maximum rated valve. The pressure of the machine should not exceed the permissible pressure rate imprinted on the pressure switch. The switch fixed setting is distinguished by three different colors of the nut. Black > 580 PSI - Red > 360 PSI.

## Installation

When installed on hot water cleaners, this accessory must be installed before the boiler. This accessory must be installed on a finished pressure washer. **Electrical installation is to be carried out by skilled personnel.**

**WARNING!** - Always provide this electric device with correct grounding.

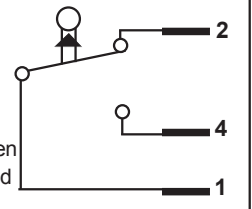


### Wiring diagram

- 1) Red wire - 2) Blue wire  
4) Brown wire

### Electrical Connection

N.O. Red + Brown - Normally Open  
N.C. Red + Blue - Normally Closed



## Maintenance

**STANDARD:** every 400 working hours (circa 10,000 cycles), check and lubricate the seals with water resistant grease.

**SPECIAL:** every 800 working hours (circa 20,000 cycles), control the wear of the seals and internal parts. If necessary, replace with original Giant Industry parts, taking care during installation to lubricate with water resistant grease.

For correct assembly, follow the exploded view.

**Maintenance is to be carried out by skilled personnel only. The manufacturer is not responsible for damage resulting from incorrect fitting and maintenance.**

## Troubleshooting

Problems	Probable Causes	Solutions
The pressure switch does not open	Faulty or missing electrical connection Broken microlever Broken spring Broken microcontacts Jammed piston	Check and/or replace Replace microswitch Replace Replace microswitch Check and/or clean
Fluid in the casing	Damaged piston seals Damaged nut seals	Check and/or replace Check and/or replace



**Giant Industries, Inc.**  
900 N. Westwood Ave.  
Toledo, Ohio 43607  
419-531-4600  
FAX 419-531-6836  
www.giantpumps.com

© Copyright 2012 Giant Industries, Inc.