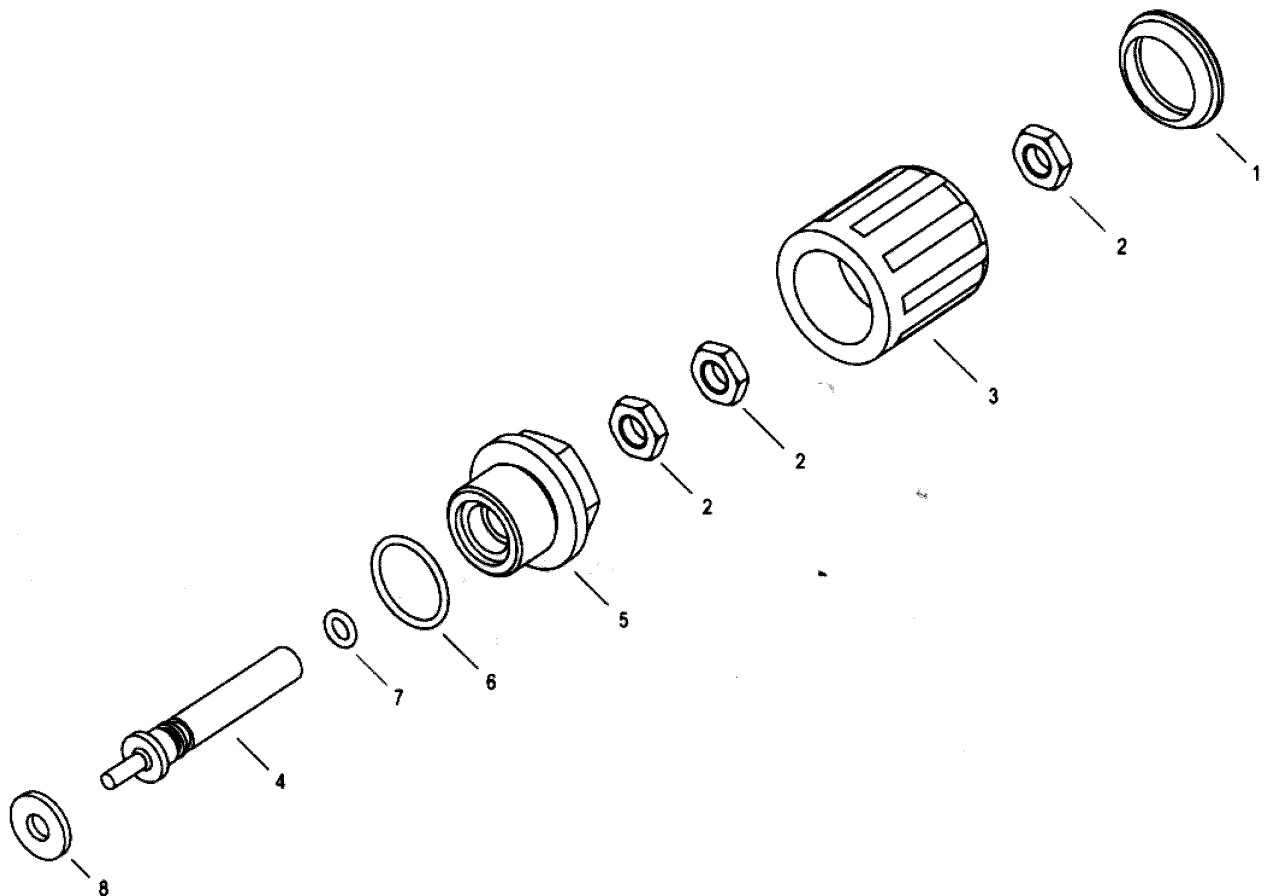


Model 22743

Pulsator Valve

FOR USE ON
P435/P455B Pumps



Item	Part #	Description	Quantity
1	07046	Cover	1
2	07044	Lock Nut	3
3	07045	Handwheel	1
4	06407	Adjusting Screw	1
5	05697	Valve Plug	1
6	05545	O-Ring	1
7	07937	O-Ring	1
8	05698	Spacer	1



WARNING: This product might contain a chemical known to the State of California to cause cancer, and birth defects or other reproductive harm.

For more information go to www.P65Warnings.ca.gov

GIANT

Performance Under Pressure

Giant Industries, Inc.

900 N. Westwood Ave.

Toledo, Ohio 43607

(419) 531-4600

FAX (419) 531-6836

www.giantpumps.com

INSTALLATION INSTRUCTIONS

22743 Pulsator Valve

For use on P455B pumps

- 1). Remove center inlet valve plug from the front of the pump manifold.
- 2). Adjust the hand wheel (3) on the pulsator until it is all the way out by turning it counter clockwise. (Note: the handwheel will stop when it is all the way out.)
- 3). Install the pulsator assembly into the center inlet valve port and tighten with a 24 mm wrench.

OPERATING INSTRUCTIONS

- 1). To use the pump as a pulsating pump, turn the handwheel (3) clockwise until it is tight.
- 2). To use the pump as a pressure washer, turn the hand wheel counterclockwise until it stops.