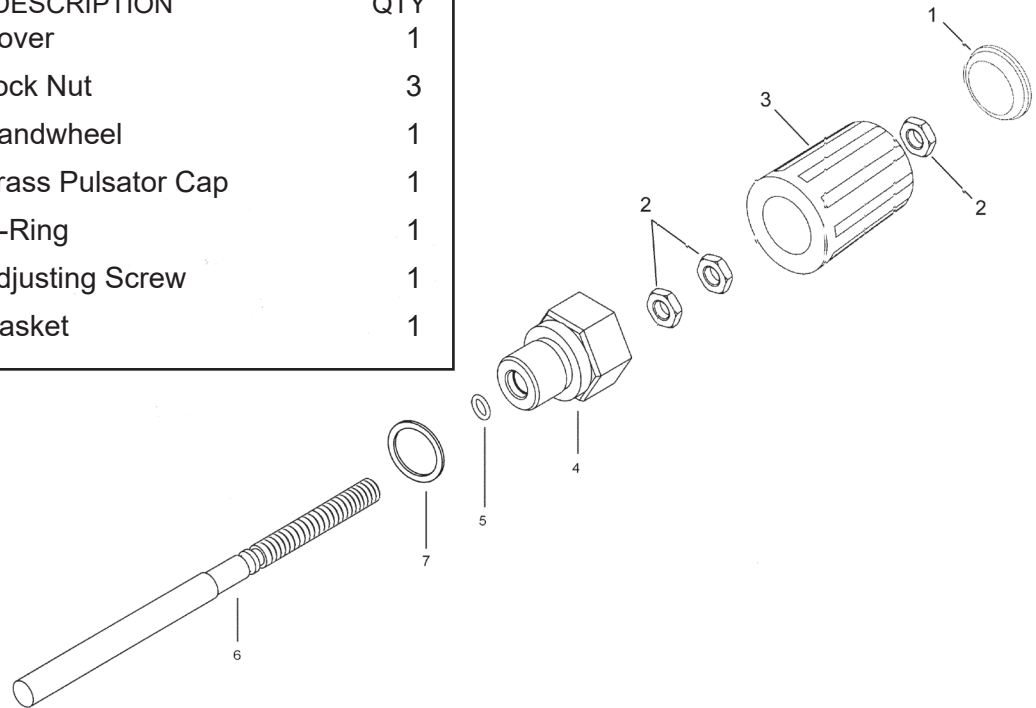


Model 22740

Pulsator Valve FOR USE ON LP350, LP400 LP450 Pumps

ITEM #	PART #	DESCRIPTION	QTY
1	07046	Cover	1
2	07044	Lock Nut	3
3	07045	Handwheel	1
4	06858	Brass Pulsator Cap	1
5	07937	O-Ring	1
6	06859	Adjusting Screw	1
7	07161	Gasket	1



INSTALLATION INSTRUCTIONS

- 1). Remove Plug (50A), and washer (50A) from the bottom of valve casing.
- 2). Place washer (50A) on brass plug (4). Secure the brass pulsator cap into the port. Adjust the handwheel (1) until it is all the way out by turning it counter clockwise. (Note: the handwheel will stop when it is all the way out).

OPERATING INSTRUCTIONS

- 1). To disable the inlet valve and engage the pulsator valve, turn the handwheel (3) clockwise until it is tight.
- 2). To disengage the pulsator valve, turn the handwheel (3) counterclockwise until it stops.

GIANT
Performance Under Pressure

Giant Industries, Inc.
900 N. Westwood Ave.
Toledo, Ohio 43607
PHONE: 419-531-4600
FAX: 419-531-6836
www.giantpumps.com



WARNING: This product might contain a chemical known to the State of California to cause cancer, and birth defects or other reproductive harm. For more information go to www.P65Warnings.ca.gov