

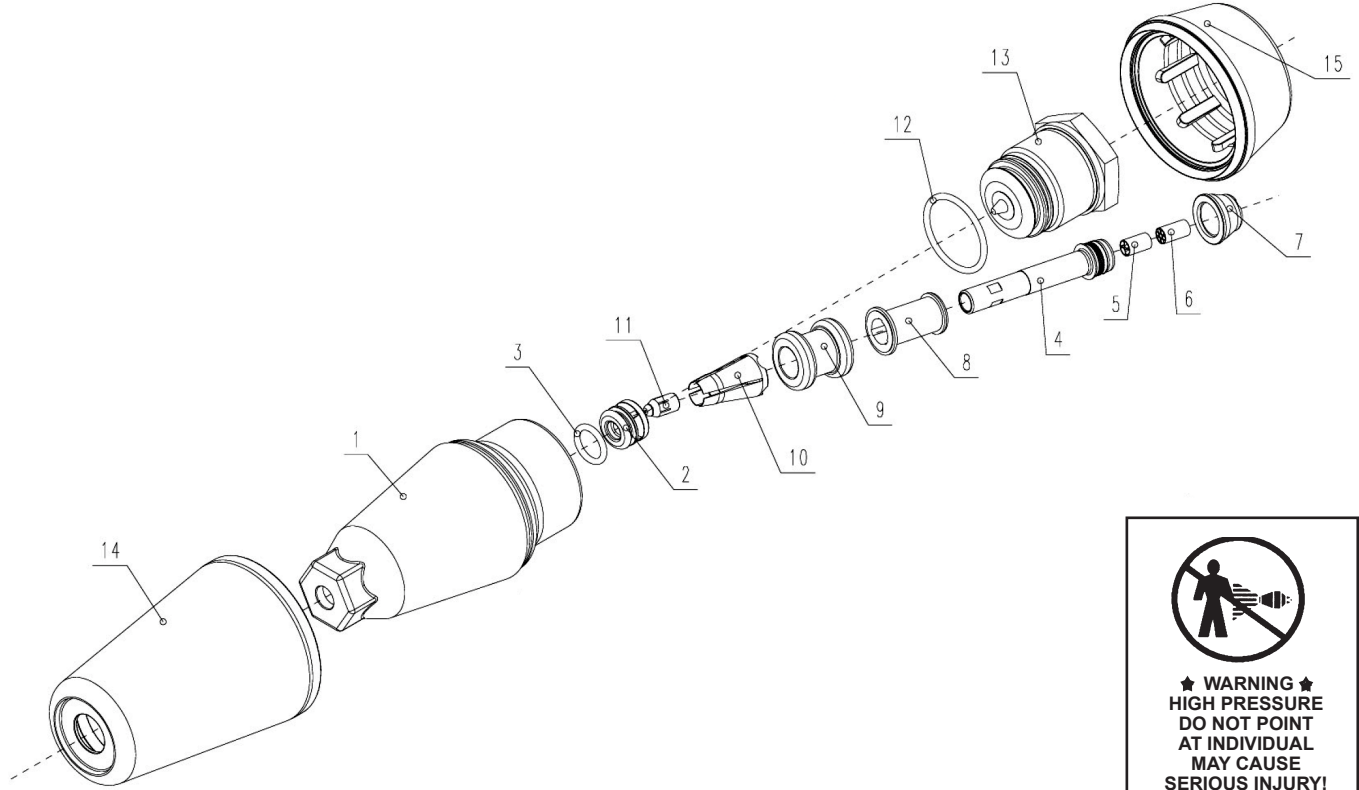
Series

22060A



Turbo-Laser

TM



Operating Conditions		Model #	Nozzle Size	Repair Kit# (Items 2-12)
	U.S. (Metric)			
Maximum Flow:	18.7 GPM (84 l/min)	22060A-2.0	#2.00	09240A-2.0
Maximum Pressure:	5800 PSI (400 bar)	22060A-3.0	#3.0	09240A-3.0
Spray Angle:	20°	22060A-3.5	#3.5	09240A-3.5
Maximum Temperature:	195 ° F (90 °C)	22060A-4.0	#4.0	09240A-4.0
Weight:	1lb. 4 ozs. (.57 kg)	22060A-4.5	#4.5	09240A-4.5
Connection:	1/4" FBSP* or 1/2" FNPT [†]	22060A-5.0	#5.0	09240A-5.0
* To convert from BSP to NPT threads you may order 06581 (1/4" MBSP x 1/4" FNPT) or 06581M (1/4" MBSP x 1/4" MNPT)		22060A-5.5	#5.5	09240A-5.5
†If a 1/2" FNPT connection is needed, add "-08" to the part number		22060A-6.0	#6.0	09240A-6.0
Parts List		22060A-7.0	#7.0	09240A-7.0
Item	Part#	Description	Quantity	
1	27015	Discharge Casing	1	22060A-8.0
12	27016	O-Ring	1	22060A-9.0
14	27013	Front Cap	1	22060A-12.0
15	27014	Rear Cap	1	22060A-15.0
Note: Item numbers 2-12 are sold only in a kit		22060A-18.0	#18.0	09240A-18.0
		22060A-20.0	#20.0	09240A-20.0

TURBO LASER REPAIR INSTRUCTIONS

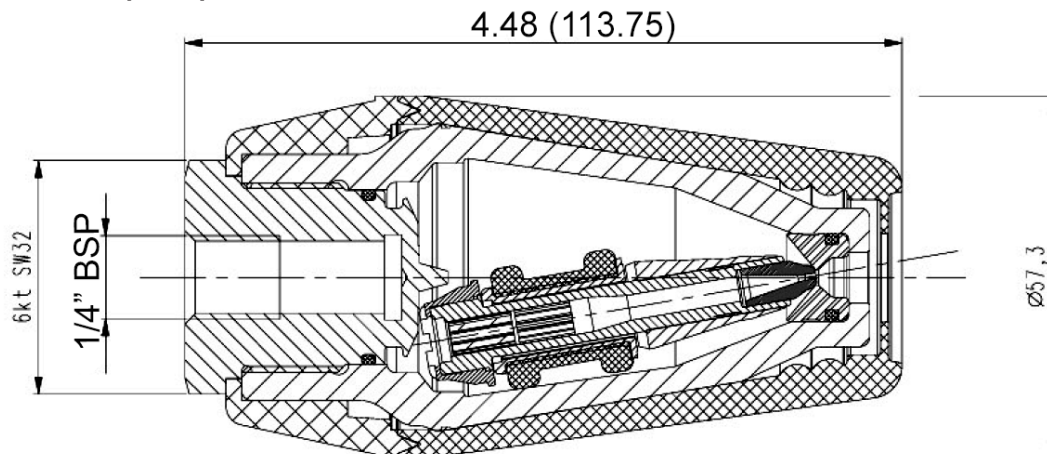
Before repairing the **TURBO LASER**, please note that items number 2 and number 11 are not interchangeable with all nozzles.

- 1) Remove covers (14 & 15) by inserting a standard screwdriver in the slot in between the covers; twist screwdrivers to loosen the covers.
- 2) Using a 24mm boxed end wrench and a 24mm socket unscrew the drive plug (13) from the discharge casing (1).
- 3) Remove rotor assembly (7-11) and replace with a new assembly.
- 4) Using a 5/16" wooden dowel rod press out ceramic seat (2) and o-ring (3) from the top side of discharge casing (1). Replace with new ceramic seat and o-ring.
- 5) If necessary, replace the o-ring (12).
- 6) Insert rotor assembly (7-11) into the discharge casing (1) and tighten the drive plug (13).
- 7) Snap covers (14 & 15) together over the **TURBO LASER**. Lightly shake the **TURBO LASER** to ensure that the rotor assembly (7-11) has unimpared movement.

MAINTENANCE NOTICE:

If turbo will not spin, take unit apart and clean the nozzle. If turbo still will not spin, have an authorized distributor repair nozzle.

Dimensions - in (mm)



WARNING: This product might contain a chemical known to the State of California to cause cancer, and birth defects or other reproductive harm.

For more information go to www.P65Warnings.ca.gov

GIANT
Performance Under Pressure

Giant Industries, Inc.

900 N. Westwood Ave.

Toledo, Ohio 43607

PHONE: 419-531-4600

FAX: 419-531-6836

www.giantpumps.com

© Copyright 2021 Giant Industries, Inc.