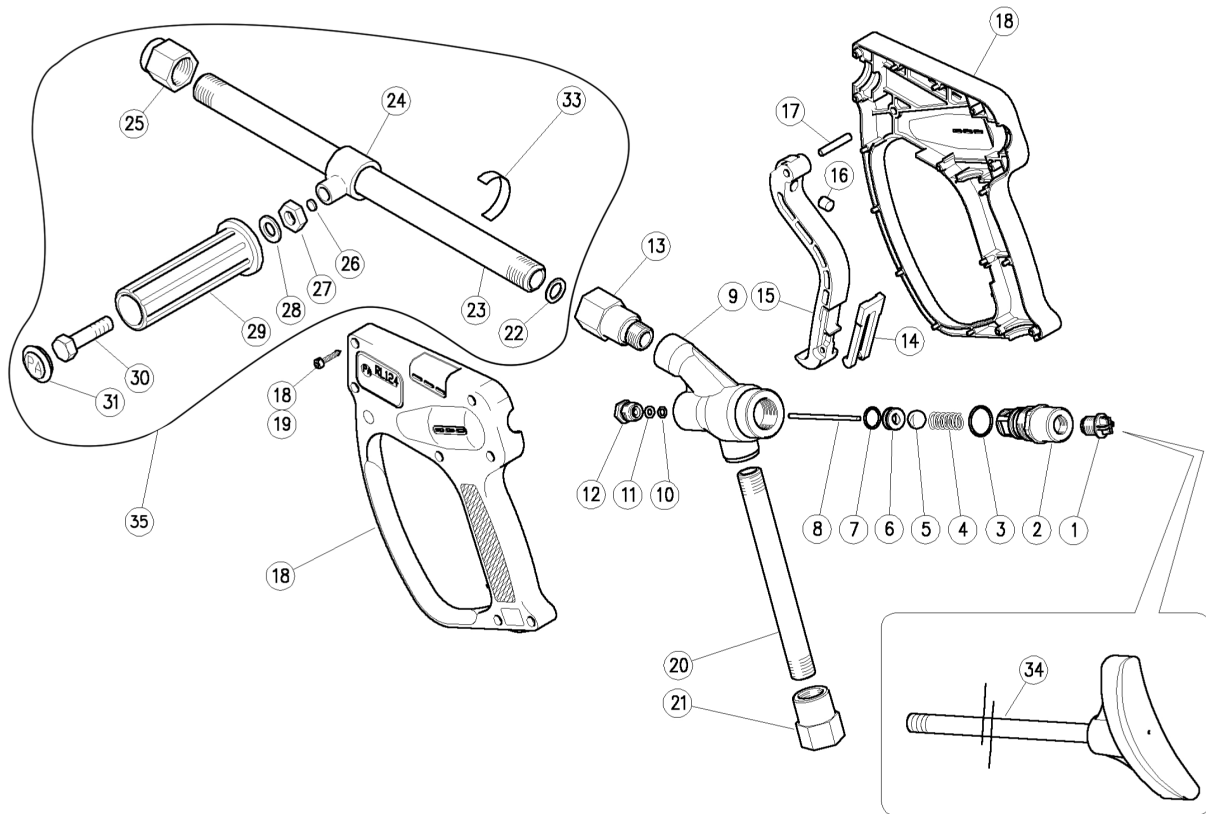


Model 21790

High Flow Shut-Off Gun



PARTS LIST

Item	Part #	Description	Qty.	Item	Part #	Description	Qty.
1	04038	Plug, 1/4" BSP	1	20	04053	Tube	1
2	04039	Spring Holder	1	21	04054	Coupling	1
3	08719	O-Ring	1	22	04080	Washer	2
4	04040	Spring	1	23	04081	*Tube, 16"	1
5	05565	Ball	1	23	04082	**Tube, 32"	1
6	04041	Seat	1	24	04084	Tube Fastener	1
7	08706	O-Ring	1	25	04083	Nozzle Holder	2
8	04042	Piston	1	26	21771	Plate	1
9	04043	Housing	1	27	04085	Hexagon Nut	1
10	04044	O-Ring	1	28	04086	Washer	1
11	04045	Back-up Ring	1	29	13062	Knob	1
12	04046	Plug	1	30	04087	Screw	1
13	04047	Coupling	1	31	04088	Plug	1
14	04048	Safety Latch	1	33	04089	Shoulder Rest	1
15	04049	Trigger	1	35	04055	*Extension Assy, 16"	1
16	14063	Stop Pin	1	35	04056	**Extension Assy, 32"	1
17	04050	Parallel Pin	1				
18	04051	Casing Kit	1				
19	04052	Tapping Screw	7				

* Only for model #21790-16

**Only for model #21790-32

OPERATING SPECIFICATIONS

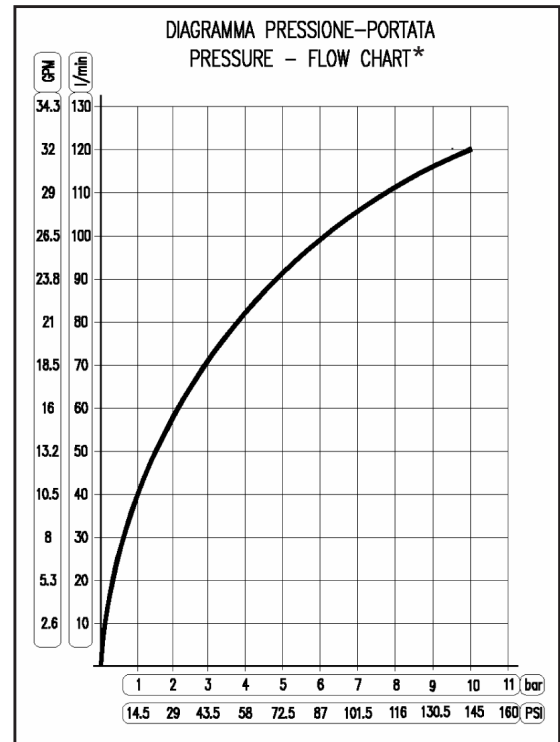
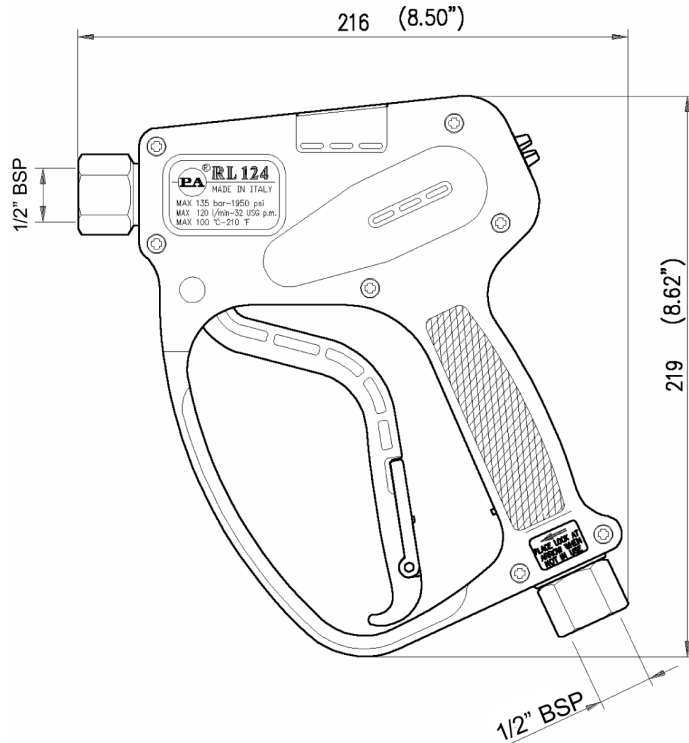
	U.S.	Metric
Max. Flow:	31.7 GPM	120 L/min
Max. Pressure:	1960 PSI	135 Bar
Max. Temp.:	212° F	100° C
Weight:	2.75 lbs.	1248 grams
Inlet Port:	1/2" BSP	
Outlet Port:	1/2" BSP	

NOTE: The gun has been deisned for continuous use at a water temperature of 140° F (60° C). It can only operate at 212° F (100° C) for short periods of time.



WARNING
HIGH PRESSURE
DO NOT POINT AT INDIVIDUAL
MAY CAUSE SERIOUS INJURY!

DIMENSIONS - mm (in)



* **Attention:** in order to prevent any risk of instability due to pressure spikes, check the above chart carefully!

INSTRUCTIONS

This product is to be utilized with clean fresh water, even slightly additivated with normal detergents. For use involving different or corrosive liquids, contact Giant's technical department. Appropriate filtration should be installed when using unclean liquids. Choose the gun in line with the data of nominal running (system rated pressure, max flow and max temperature). In any case, the pressure of the machine should not exceed the permissible pressure rate imprinted on the gun.

INSTALLATION

This gun was designed to operate with **hot water** (in compliance with the technical specs). Provide the plant generating **hot water** with an equipment limiting the incidental increase of the fluid temperature.

Always fit a safety valve to protect the delivery conduct when the latter is under pressure.

Choose a suitable nozzle and adjust the valve mounted in the front of the gun, thus obtaining a constant supply and avoiding unpleasant pressure spike when closing the system.

If the nozzle wears out, the pressure falls. When you install a new nozzle, adjust the system back to the original pressure.

OPERATIONS

The gun opens and closes a high pressure conduct by means of a piston acting on a seat; the return is controlled by a spring which releases the trigger. **Attention: during pump activation always set the gun with its safety latch connected in order to prevent accidental openings.**

WATER HOSE FEED

By high or very unsteady pressure values on delivery, it is necessary to mount a pressure reducer, both to level the flow rate on delivery and to protect the system components

PROBLEMS AND SOLUTIONS

PROBLEMS	PROBABLE CAUSES	SOLUTIONS
Leakage from the nozzle side of the gun	Presence of impurities Gun seat worn out	Clean Replace the seat
Leakages from the seals	Seals worn out	Replace the seals
The trigger opens up with difficulty	The pressure inside the circuit is too high	Check the bypass valve and adjust it if necessary



Giant Industries, Inc.
900 N. Westwood Ave., Toledo, OH 43607
419-531-4600 Fax: 419-531-6836
www.giantpumps.com