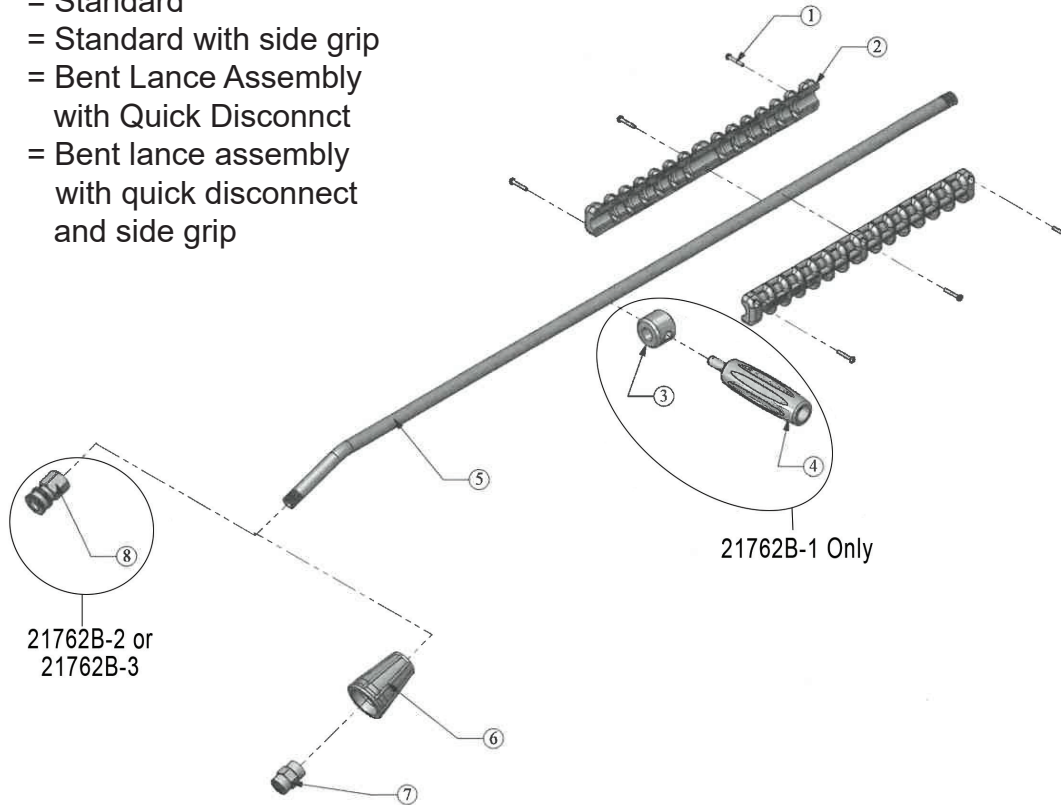


# Series

## 21762B

## Bent Lance with Vented Handle & Nozzle Protector

- 21762B = Standard
- 21762B-1 = Standard with side grip
- 21762B-2 = Bent Lance Assembly with Quick Disconnect
- 21762B-3 = Bent lance assembly with quick disconnect and side grip



### Parts List

Item	Part#	Description	Qty
1	21254	Plated Screw	6
2	21703	Lance Handle	2
3	04672	Tube Holder, 1/4" (21762B-1 / 21762B-3)	1
4	04377	Knob Assembly (21762B-1 / 21762B-3)	1
5	21736	36" Lance Tube	1
6	21778	Nozzle Protector	1
7	PF-5000-04-04	Pipe Coupling	1
8	08276	Quick Disconnect, 1/4" (21762B-2 / 21762B-3)	1

### Common Specifications:

<b>Pressure:</b>	7250 PSI
<b>Length:</b>	35.5"
<b>Maximum Temperature:</b>	300 °F
<b>Inlet:</b>	1/4" FNPT
<b>Outlet Port:</b>	1/4" FNPT
<b>Bend:</b>	30°
<b>Material:</b>	Stainless Steel
<b>Weight:</b>	27 oz.



**WARNING:** This product might contain a chemical known to the State of California to cause cancer, and birth defects or other reproductive harm.  
For more information go to [www.P65Warnings.ca.gov](http://www.P65Warnings.ca.gov)

# GIANT

Performance Under Pressure

900 N. Westwood Ave. Toledo, Ohio 43607  
419-531-4600 FAX 419-531-6836  
[www.giantpumps.com](http://www.giantpumps.com)

© Copyright 2022 Giant Industries, Inc.

01/22 21762B.INDD