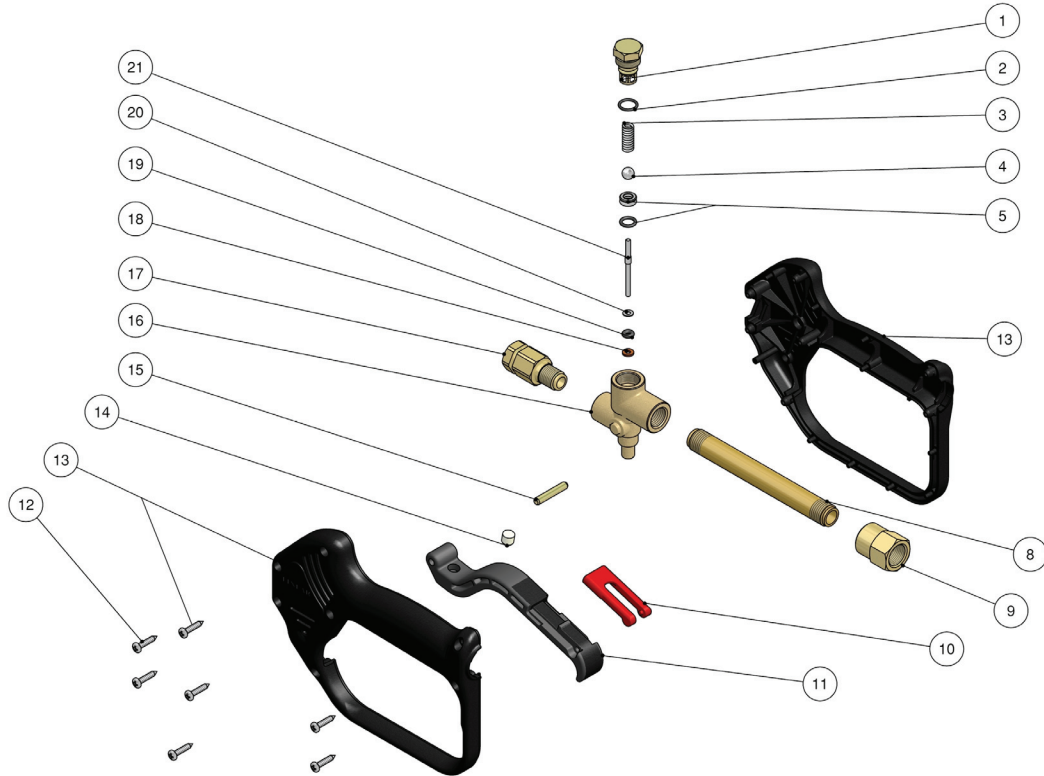


Models

Linear Shut-Off Gun

21380/21380SS/21380-08-08SS



PARTS LIST			
Item	Part #	Description	Qty
1	05980	Plug	1
2	05981*	O-Ring	1
3	05982	Spring	1
4	05983*	Ball	1
5	05984*	Seat	1
8	14059	Inlet Tube	1
9	05986	Inlet Fitting, 21380	1
9	08628-0400	Inlet Fitting, SS, 21380SS	1
9	08628-08-0400	Inlet Fitting, SS, 21380-08-08SS	1
10	04048	Safety latch, red	1
11	05987	Trigger, black	1
12	08604	Self Tapping Screw	7
13	05989	Housing with Screws	1
14	05988	Cam	1
15	05990	Parallel Pin	1
16	08650	Valve Body	1
17	05992	Discharge Fitting, 21380	1
17	08649-0400	Discharge Fitting, SS, 21380SS	1
17	08649-08-0400	Discharge Fitting, SS, 21380-08-08SS	1
18	04045*	Back-up ring	1
19	04044*	O-Ring	1
20	05993	Washer	1
21	05994*	Piston	1

OPERATING SPECIFICATIONS

	U.S.	Metric
Max. Flow:	10.6 GPM	40 L/min
Max. Pressure:	4500 PSI	310 Bar
Max.Temp.:	320° F	160° C
Weight:	1.3 lbs.	590 grams
Inlet Port (21380/21380SS):	3/8" FNPT	
(21380-08-08SS):	1/2" FNPT	
Outlet Port (21380/21380SS):	1/4" FNPT	
(21380-08-08SS):	1/2" FNPT	

NOTE: The gun has been deisned for continuous use at a water temperature of 195° F (90° C). It can only operate at 320° F (160° C) for short periods of time.

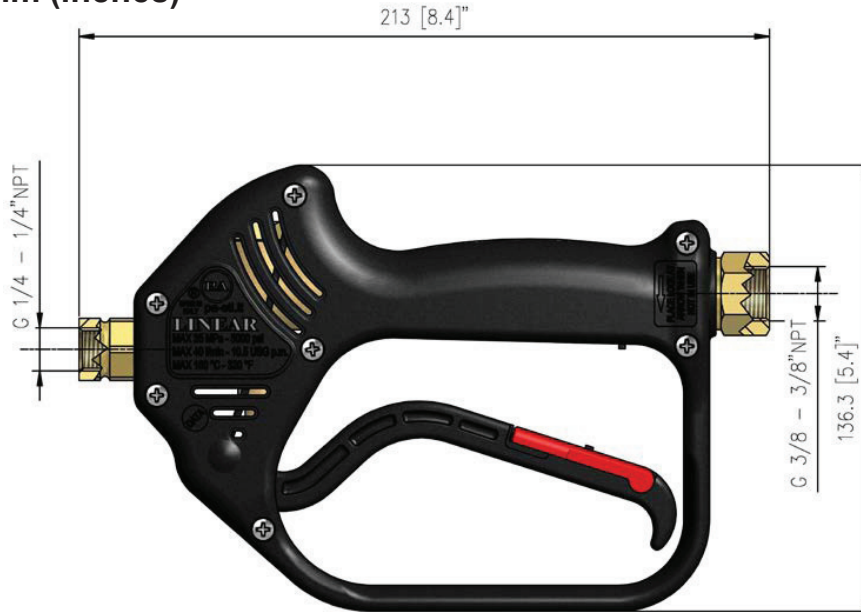
Kit - #09748

*includes 2,4,5,18,19 and 21



WARNING
HIGH PRESSURE
DO NOT POINT AT INDIVIDUAL
MAY CAUSE SERIOUS INJURY!

DIMENSIONS – mm (inches)



INSTRUCTIONS

This product is to be utilized with clean fresh water, even slightly added with normal detergents. For use involving different or corrosive liquids, contact the Giant's technical department. Appropriate filtration should be installed when using unclean liquids. Choose the gun in line with the data of nominal running (system rated pressure, max flow and max temperature). The pressure of the machine should not exceed the permissible pressure rate imprinted on the gun.

INSTALLATION

This gun was designed to operate with **hot water** (in compliance with the technical specifications).

Always fit a safety valve to protect the delivery conduct when the latter is under pressure.

Choose a suitable nozzle and adjust the valve mounted in the front of the gun, thus obtaining a constant supply and avoiding unpleasant pressure spike when closing the system.

If the nozzle wears out, the pressure falls. When you install a new nozzle, adjust the system back to the original pressure.

OPERATION

The gun opens and closes a high pressure conduct due to a piston acting on the seat; the return is controlled by a spring which releases the trigger. **Caution: during pump activation, always connect the safety latch to prevent accidental openings.**

WATER HOSE FEED

By high or very unsteady pressure values on delivery, it is necessary to mount a pressure reducer in order to level the flow rate on delivery and to protect the system components.

PROBLEMS AND SOLUTIONS

PROBLEMS	PROBABLE CAUSES	SOLUTIONS
Leakage from the nozzle	Presence of impurities Gun seat worn out	Clean Replace the seat Fit adequate filters and/or check
Leaking seals	Seals worn out	Replace seal
Difficult trigger opening	High pressure inside circuit	Check the bypass valve and adjust it if necessary

MAINTENANCE

Maintenance has to be carried out by **Specialized Technicians.**

STANDARD: every 400 working hours (circa 10,000 cycles), check and lubricate the seals with water resistant grease.
SPECIAL: every 800 working hours (circa 20,000 cycles), check the wear of the seals and internal parts and if necessary, replace with original Giant parts, taking care during installation to lubricate with water resistant grease.

GIANT

Performance Under Pressure

Giant Industries, Inc.

900 N. Westwood Ave., Toledo, OH 43607

419-531-4600 Fax: 419-531-6836

www.giantpumps.com