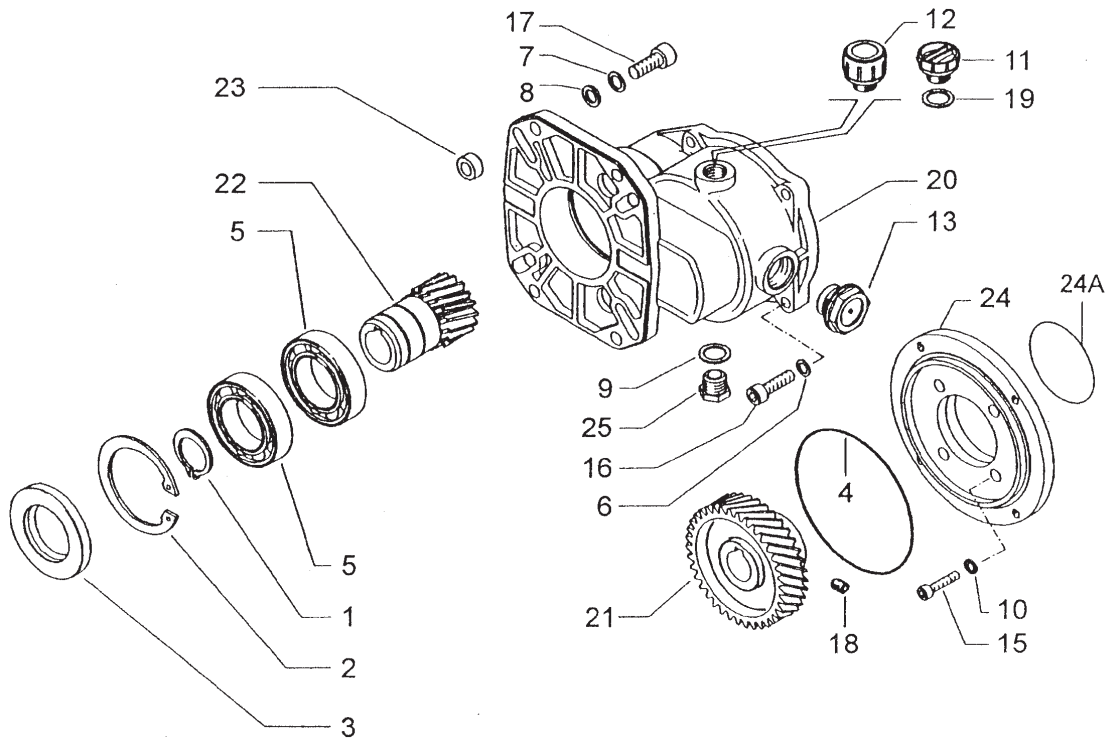


# Model 08499A

# Gearbox for P200 and P300 Series Pumps



Item	Part#	Description	Quantity
1	06456	Clip Ring	1
2	06457	Clip Ring	1
3	06455	Radial Shaft Seal	1
4	06458	O-Ring	1
5	06459	Ball Bearing	2
6	06460	Washer	4
7	06461	Washer	4
8	06462	Washer	4
9	06463	Copper Ring	1
10	06464	Washer	4
11	06465	Oil Filler Plug	1
12	06466	Plug	1
13	06467	Oil Sight Glass with Seal	1
15	06469	Cap Screw	4
16	06470	Cap Screw	4
17	06471	Cap Screw	4
18	06472	Set Screw	1
20	06453	Gear Casing	1
21	06474	Gear Wheel	1
22	06475	Pinion	1
23	06476	Spacer Retainer	4
24	06454	Flange	1
24A	08183	O-Ring	1
25	06477	Plug	1

## Operating Specifications

<b>Reduction:</b>	2.176 - to -1
<b>Maximum HP:</b>	18 Hp (13kW)
<b>Maximum Speed:</b>	3600 RPM
<b>Weight:</b>	8.71 lbs.(3.95 kg)
<b>Oil Capacity:</b>	10.0 fl. ozs.(.035 liter)
<b>Recommended Oil:</b>	SAE 90
<b>Connection:</b>	1" dia. Shaft, 3.5" Shaft Length
<b>Engine:</b>	Adapts to most gasoline engines (SAE J609B)

# GIANT

**Performance Under Pressure**

**Giant Industries, Inc.**

900 N. Westwood Ave.

Toledo, Ohio 43607

419-531-4600

419-531-6836 Fax

www.giantpumps.com

