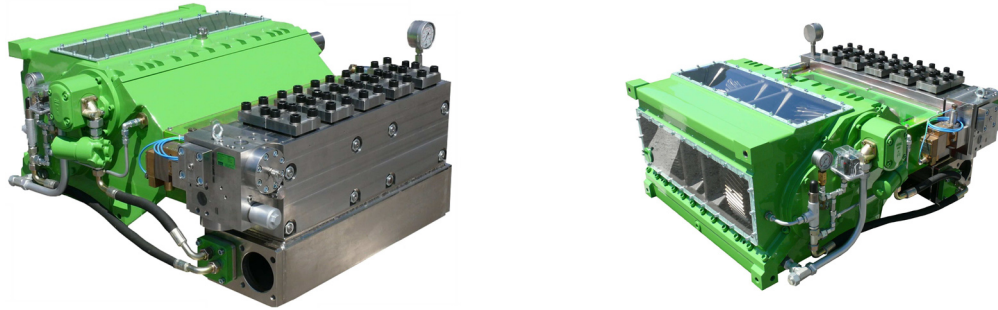


K 50000 - 5G Quintuplex Plunger Pump



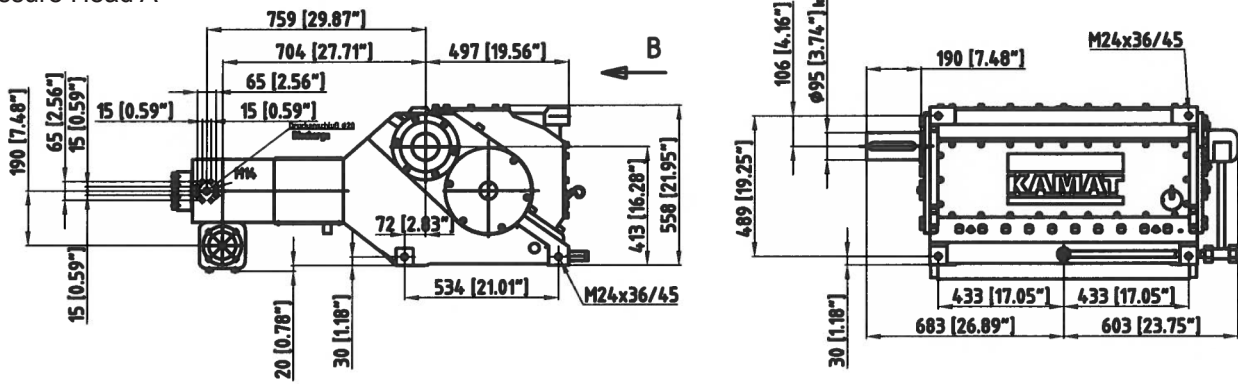
Rated Speed 450 RPM			Pressure at specific power inputs								Pump Head Style		
Type	FLOW		422 Hp	315 kW	476 Hp	355 kW	536 Hp	400 kW	710 Hp	530 kW	A	M	MC
	GPM	L/min	PSI	Bar	PSI	Bar	PSI	Bar	PSI	Bar			
K 50018 - 5G	18.2	69	35235	2430	39730	2740	44733	3085	50750	3500	X		
K 50020 - 5G	22.5	85	28493	1965	32190	2220	36250	2500	47053	3245	X		
K 50022 - 5G	27.2	103	23563	1625	26535	1830	29943	2065	38933	2685	X		
K 50024 - 5G	32.2	122	19793	1365	22330	1540	25158	1735	32698	2255	X		
K 50026 - 5G	37.8	143	16893	1165	18995	1310	21460	1480	27840	1920	X		
K 50028 - 5G	43.9	166	14573	1005	16385	1130	18488	1275	23998	1655	X		
K 50030 - 5G	50.5	191	12688	875	14283	985	16095	1110	20953	1445	X		
K 50032 - 5G	57.3	217	11093	765	12543	865	14138	975	18415	1270	X		
K 50036 - 5G	72.7	275	8773	605	9933	685	11165	770	14500	1000	X		
K 50040 - 5G	89.6	339	7105	490	8048	555	9063	625	11745	810	X		
K 50045 - 5G	113.3	429	5583	385	6308	435	7105	490	9280	640	X		
K 50050 - 5G	140.0	530	4568	315	5148	355	5800	400	7540	520	X	X	
K 50055 - 5G	169.4	641	3770	260	4205	290	4785	330	6235	430		X	X
K 50060 - 5G	201.6	763	3118	215	3553	245	3988	275	5220	360		X	X
K 50065 - 5G	236.5	895	2683	185	3045	210	3408	235	4423	305		X	X
K 50070 - 5G	274.5	1039	2320	160	2610	180	2900	200	3843	265			X
K 50075 - 5G	314.9	1192	2030	140	2248	155	2538	175	3335	230			X
K 50080 - 5G	358.3	1356	1740	120	1958	135	2248	155	2900	200			X
K 50085 - 5G	404.5	1531	1523	105	1740	120	1958	135	2610	180			X
K 50090 - 5G	453.6	1717	1378	95	1595	110	1740	120	2320	160			X
K 50095 - 5G	505.4	1913	1233	85	1450	100	1595	110	2103	145			X

- ◆ Flow rate is based on 100% volumetric efficiency and 68° F (20° C) ambient temperature.
- ◆ Depending on fluid medium, a minimum inlet pressure is required.
- ◆ Depending on rod loading, a minimum crankshaft RPM is required.
- ◆ 7% rest pulsation - dynamically balanced
- ◆ Gear with force-fed lubrication and oil cooling
- ◆ Standard Gear Ratios: i = 3.30, 3.95, 4.66 and 5.63
- ◆ Weight: 4849 lbs (2200 kg)
- ◆ API 674 specifications available upon request.
- ◆ Contact your local distributor or Giant Industries for use with special mediums. i.e. seawater, glycol, methanol, oils, etc.

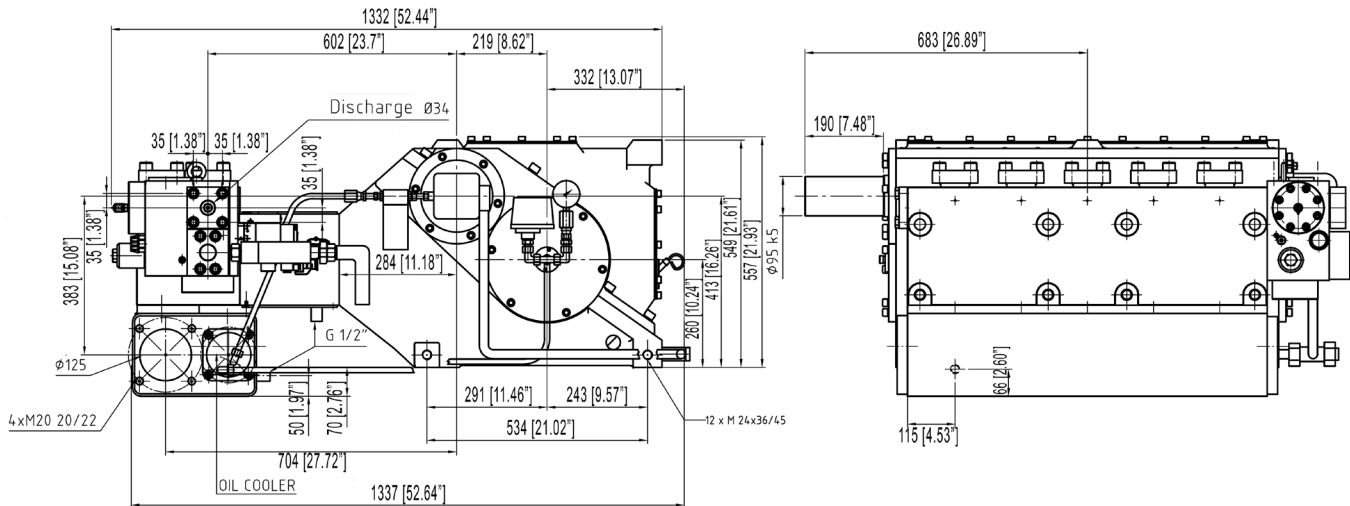
Subject to change without notice

Pump Dimensions mm(in)

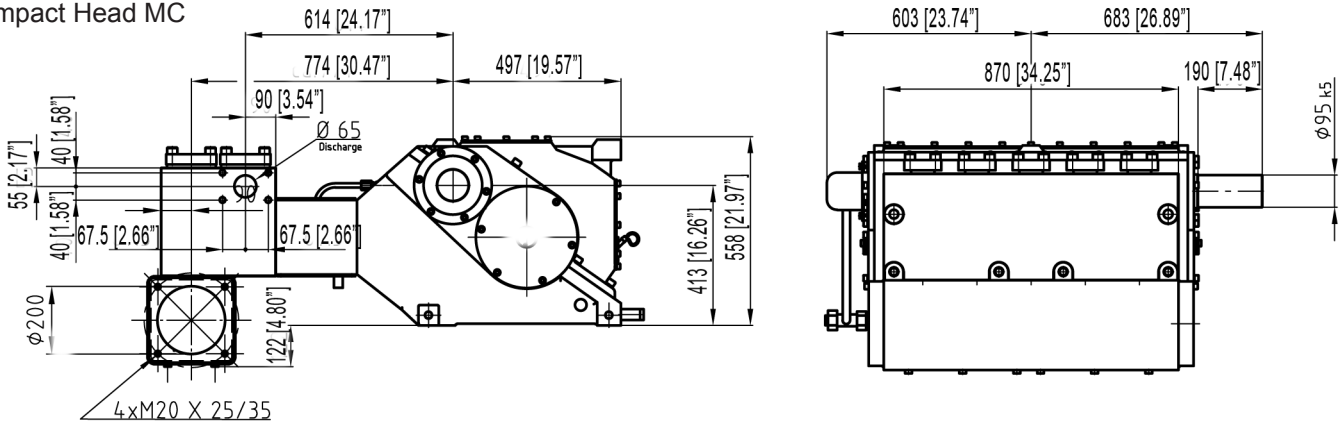
High Pressure Head A



Compact Head M



Compact Head MC



GIANT

Performance Under Pressure
GIANT INDUSTRIES, INC.

900 N. Westwood Ave.

Toledo, Ohio 43607

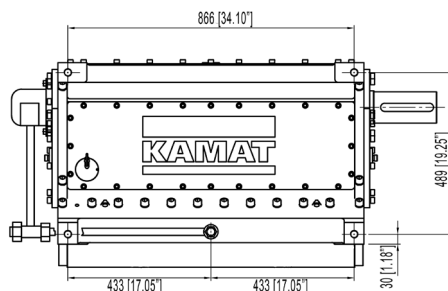
Phone: (419) 531-4600

Fax: (419) 531-6836

www.giantpumps.com

© Copyright 2014 Giant Industries, Inc.

Vertical Mount



Footprint

