

P414/P460A/P480 PARTS LIST

<u>ITEM</u>	<u>PART</u>	<u>DESCRIPTION</u>	<u>QTY.</u>	<u>ITEM</u>	<u>PART</u>	<u>DESCRIPTION</u>	<u>QTY.</u>
1	08377	Crankcase	1	26	06488	Valve Casing (P460/P480)	1
2	08378	Oil Fill Plug with Gasket	1	26	05939	Valve Casing (P414)	1
3	06479	Crankcase Cover	1	26A**	04767	Set Screw	2
3A	07186	Oil Sight Glass w/Gasket	1	27A	05543	Valve Assy.	6
4	08380	O-Ring	1			(Includes items 27-31)	
5	07109	Oil Drain Plug	1	27	05541	Valve Seat	6
5A	06015	O-Ring	1	28	05542	Valve Plate	6
5B	08092	Plug with Gasket	1	29	07906	Valve Spring	6
6	01010	Screw	4	30	07907	Valve Spring Retainer	6
6A	01011-0400	Spring Washer	4	31	07770	O-Ring	6
7	04739	Bearing Cover Open	1	32	08406-0100	Plug	3
8	05291	Bearing Cover Closed	1	33	07489	O-Ring	3
8A	05292	Shim	1-3	34	06494	Cap Screw	8
8B	05293	Shim	1	36	04369	Plug, 3/8" BSP	1
9	01016	O-Ring	2	37	08486	Copper Washer	1
10	07114	Screw with Washer	8	38	07109-0400	Plug, 1/2" BSP	1
11	07459	Radial Shaft Seal	1	39	06272	Copper Washer	1
12	05350	Bearing	2		04665	Crankcase Assembly, P414/P480	
13	04741	Crankshaft, P460	1			(1-19, 34)	
13	04740	Crankshaft, P414/P480	1		04666	Crankcase Assembly, P460	
13A	04742	Spacer Ring	1			(1-19, 34)	
14	08091	Fitting Key	1		04667	Manifold Assembly, P460/P480	
15	08390	Connecting Rod Assy.	3			(26-39 w/o 34)	
15A	07311	Screw with Washer	6		04668	Manifold Assembly, P414	
16	06480	Plunger Assembly	3			(26-39 w/o 34)	
17	06790	Crosshead Pin	3		04669	Seal Case Assembly (20-25B)	
19	05444	Oil Seal	3				
20	05938	Seal Adapter	3				
20A	06482 ⁺	Seal Casing	1				
20C	06589	Plug	2				
20D	07676	Copper Washer	2				
21	07266	O-Ring	3				
23*	06483	Grooved Seal Packing	6				
23A**	13036	Spacer Ring	2				
24	06484	Pressure Ring	3				
25	06485	Seal Case	3				
25A	06492	Support Ring	6				
25B	06487	O-Ring	6				

*Important! If the pump is not used for a long period of time, it is possible the seals (23) could become hard or brittle thus causing the pump to leak when put into operation. If this is the case, we recommend the seals be replaced every 4 years.

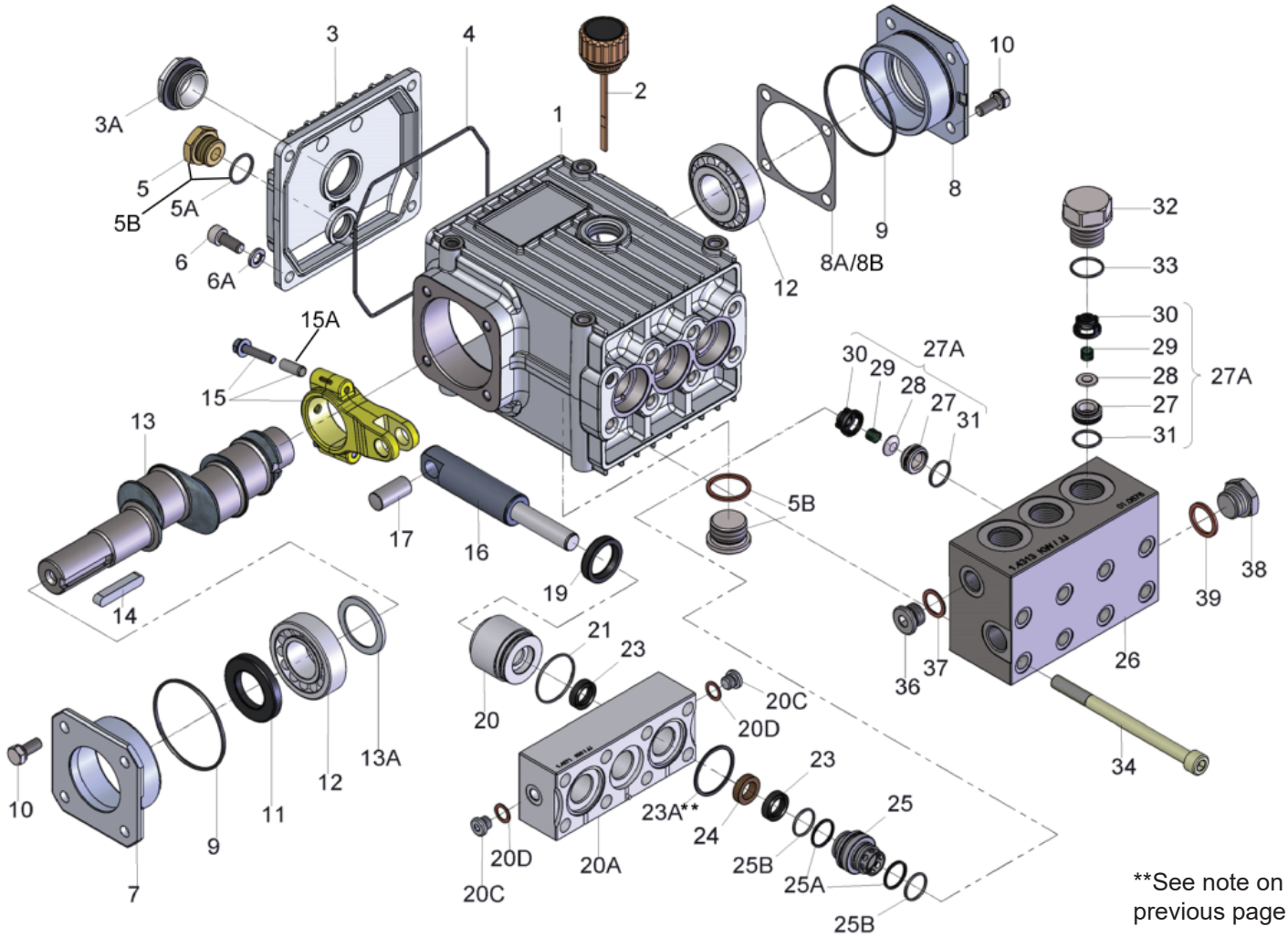
**Only used if weep return bores are closed. In this case item 23A should be removed.

+If pumps are made with closed weep return bores and open cross bore (for rinsing/cooling) the seal case becomes part number 04761.

P414/P460A/P480 TORQUE SPECIFICATIONS

<u>Item</u>	<u>Part #</u>	<u>Description</u>	<u>Lubrication</u>	<u>Torque Amount</u>
3A	07186	Oil Sight Glass w/Gasket	Loctite 5910	106 in.-lbs. (12 Nm)
5	07109	Oil Drain Plug		59 ft.-lbs. (80 Nm)
5B	08092	Plug with Gasket		59 ft.-lbs. (80 Nm)
6	01010	Screw		110 in.-lbs. (12.5 Nm)
10	07114	Screw with Washer		132 in.-lbs. (15 Nm)
15A	07311	Screw with Washer		98 in.-lbs. (11 Nm)
32	08406-0100	Plug	Pro Pack 550	110 ft.-lbs. (150 Nm)
34	06494	Cap Screw		29.5 ft.-lbs. (40 Nm)

Exploded View - P414/P460A/P480



P414/P460A/P480 REPAIR KITS

Plunger Packing Kits

Part # 09499

Item	Part #	Description	Qty.
21	07266	O-Ring	3
23	06483	Grooved Seal Packing	6
23A	13036	Spacer Ring	3
24	06484	Pressure Ring	3
25A	06492	Support Ring	6
25B	06487	O-Ring	6

Valve Assembly Kits

Part # 09498

Item	Part #	Description	Qty.
27A	05543	Valve Assembly, Complete	6
33	07489	O-Ring	3

Oil Seal Kit

Part # 09641

Item	Part #	Description	Qty.
19	05444	Oil Seal	3