

# GX SERIES PARTS LIST

ITEM#	Part#	Description	QTY.	28	06256	Push in Seat	1
1	07805	Radial Shaft Seal	1	<b>ITEM#</b>	<b>Part#</b>	<b>Description</b>	<b>QTY.</b>
2*	06310A	Adapting Flange	1	29	06227	8mm Ball	1
3	06294	O-Ring (86 x 2.5mm)	1	30	07917A	Washer	1
4	06300A	Rear Bearing	1	31	07918	Adjusting Spring	1
5+	06326A	Wobble plate 7.1 degree horizontal, 3/4"	1	32	07919	Pressure Spring	1
5**	06331A	Wobble plate 7.1 degree vertical, 7/8"	1	33***	06524	Adjusting Screw	1
5++	06419A	Two-piece wobble plate, 7.1 degree horizontal, 7/8", (GXH2525A only)	1	34***	06324	Adjusting Screw Plug	1
5A	06159A	Steel Shaft (for 06419)	1	35	06286	Manifold	1
6	06301A	Front Bearing	1	36	06295	Discharge Valve Cone	3
7	06289	Spring Disk	3	38	07910	O-Ring	1
8	06287	16mm Plunger	3	39	06298	Suction Flange	1
9	06288	Plunger Spring	3	40	06302	Stud Bolt(M8x1.25x50mm)	4
10	06299	Socket Bolt (1/4-20x3/4 10.9 GRD)	6	41****	12326	Kick Back O-Ring	1
11	08192	Gasket	1	42****	12325	Kick Back Valve Cone	1
12	06273	Oil Drain Plug	1	43****	12328	Kick Back Spring	1
13	06282	Crankcase, Vertical Only	1	44 <sup>A</sup>	06727-0400	Orifice, 1.8mm	1
13	06338	Crankcase, Horizontal Only	1	44 <sup>A</sup>	06728-0400	Orifice, 2.1mm	1
14	08083	Vent Cap, Horizontal Only	1	44 <sup>A</sup>	06729-0400	Orifice, 2.3mm	1
15	06316	16mm Oil Seal	3	46	07913	O-Ring	1
17	06292	Spacer	3	47****	06303	Injector Retainer	1
18	07374	Valve Spring	6	48	23009	Spring	1
19	06267	Guided P-Valve	3	49	23010-0100	Ball	1
20	06290	Pressure Ring	3	50	12516-0001	O-Ring	1
21	06315	16mm V-Sleeve	3	51	12517	Hose Barb	1
22	06296	Discharge Plug	4	52	07939	Nut	1
23***	12007	O-Ring	5	53	07044	Locknut	1
24	06304	Piston	1	54	07045	Handwheel	1
25	12031-0002	Back-up ring	2	55	07068	Locking Nut W/Nylon Insert	1
26***	07937	O-Ring	2	56	07046	Cover	1
27	08638	O-Ring of Push Seat	1	75	23422A	Thermal Relief Valve (Horizontal Pumps)	1
				75	23422A-N	Thermal Relief Valve (Vertical Pumps)	1

<sup>A</sup> = See pump numbering system on page 7.

- \* When ordering 06310A, please order 17026A which includes 06300A, 07805, and 06294
- \*\* When ordering 06331A, please order 17032A which includes 06331A, 06301A, and shaft ring.
- \*\*\* Optional Non-Handle Model - (Item 23) o-ring p/n 12007, (Item 26) o-ring p/n 07937, (item 33) adjusting screw p/n 06323, (item 34) adjusting screw plug p/n 06324
- \*\*\*\* Optional Non-Injector Model - (item 41) kick back valve o-ring p/n 12326, (item 42) kick back valve cone p/n 12325 (item 43) kick back spring p/n 12328, (item 47) kick back valve retainer p/n 12340
- + When ordering 06326A, please order 17020A which includes 06326A, 06301A, and shaft ring.
- ++ When ordering 06419A, please order 17171A which includes 06419A, 06159A, and 06301A.

## MOUNTING ACCESSORIES (Sold Separately)

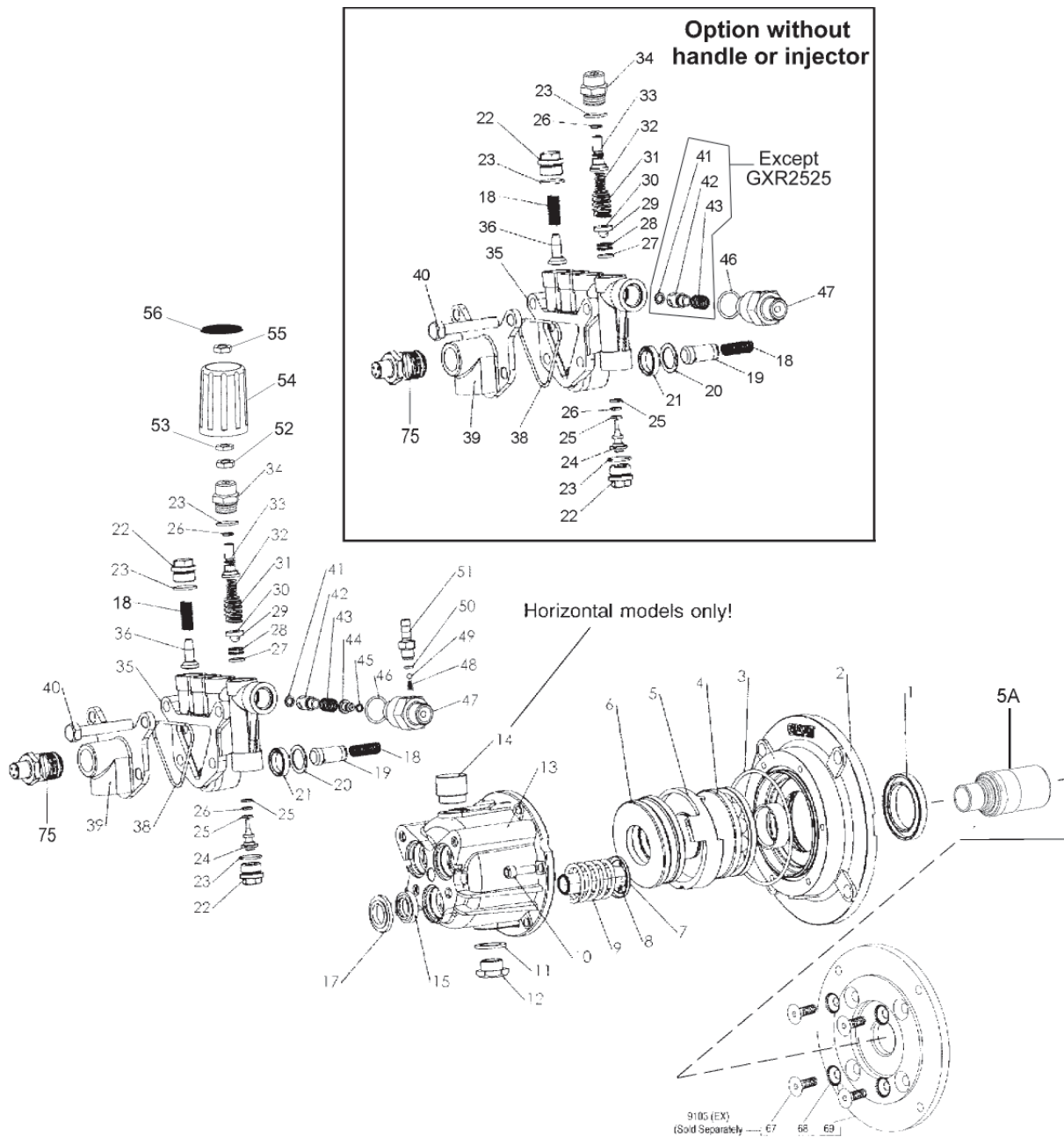
Item	Description
09103(EX) <sup>1</sup>	Gasoline Flange Kit (excluding GXH2525A models)
09605	Gasoline Flange Kit (GXH2525A only)
07435	Bolts for 09103/09605

<sup>1</sup> "EX" Suffix added for engines requiring an external pilot

## GX SERIES TORQUE SPECIFICATIONS

<u>Position</u>	<u>Item#</u>	<u>Description</u>	<u>Torque Amount (ft.-lbs)</u>
10	06299	Socket Bolt	100 in.-lbs.
40	06302	Stud Bolt	150 in.-lbs.

# GX Series EXPLODED VIEW



## Plunger Packing Kit # 09465

Item	Part #	Description	Qty.
20	06290	Support Ring	3
21	06315	V-Sleeve	3

## Oil Seal Kit # 09468

Item	Part #	Description	Qty.
15	06316	Plunger Oil Seal	3

## Valve Assembly Kit # 09466

Item	Part #	Description	Qty.
18	07374	Valve Spring	6
19	06267	Guided P-Valve	3
36	06295	Discharge Valve Cone	3

## Unloader Repair Kit # 09467

Item	Part #	Description	Qty.
23	12007	O-Ring	2
25	12031-0002	Back-up Ring	2
26	07937	O-Ring	2
27	08638	O-Ring	1
28	06256	Seat	1
29	06227	8mm Ball	1
41	12326	O-Ring	1