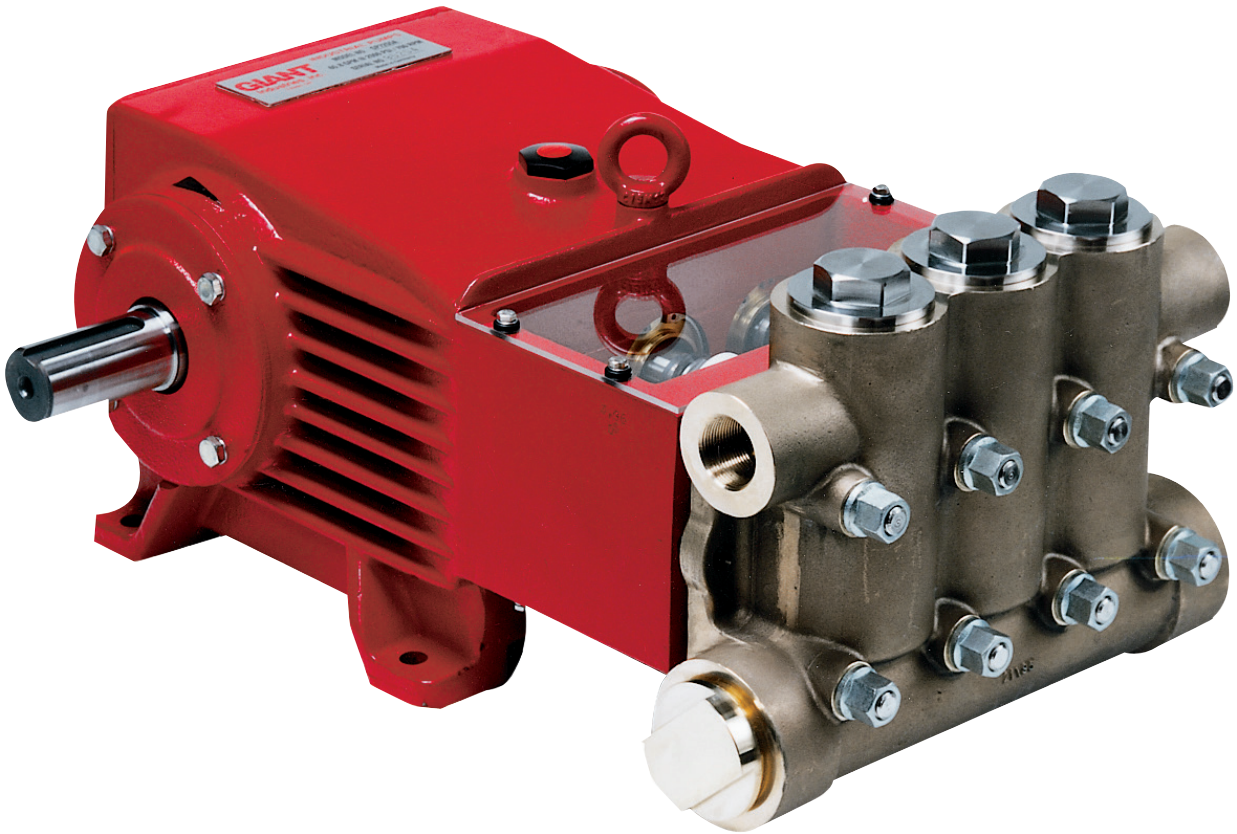


Models

GP7150A and GP7155A



Contents:

Installation Instructions	page 2
Pump Specifications (GP7150A):	page 3
Exploded View:	page 4
Parts List:	page 5
Pump Specifications (GP7155A):	page 6
Kits/Torque Specifications:	page 7
Maintenance Information:	page 7
Repair Instructions:	page 8
Troubleshooting Guide:	page 9
Dimensions:	page 10
Warranty Information	back page

GP7150A & GP7155A PUMP SPECIFICATIONS

Performance

	Power Required	Pressure	Max. Speed	Max. Flow	Max. Temp.	Plunger \varnothing	Plunger Stroke	Weight	NPSHR
Model	BHP (kW)	PSI (bar)	RPM	GPM (l/min)	°F (°C)	in (mm)	in (mm)	lbs. (kg)	ft. of head (mWs)
GP7150A	70.6 (52.7)	1900 (130)	700	54.4 (205.8)	140 (60)	1.97 (50)	1.89 (48)	375 (170)	26.2 (8.0)
GP7155A	65.7 (49.0)	1500 (100)	700	65.8 (249.1)	140 (60)	2.17 (55)	2.0 (52)	375 (170)	37.7 (11.5)

Figures given for maximum pressure and maximum speed (rpm) apply to intermittent operation with cold water.

When the pump is used in continuous operation and/or with water warmer than 104°F (40°C), these values must be reduced by 10%.

Performance data for intermittent operation, data for continuous operation on request.

For information on intermittent operation and calculating of the performance data, see the Giant Industries assembly instructions.

NPSHR / Inlet pressure

Required NPSH refers to water at 68 °F (20 °C) at maximum permissible pump speed.



Use of both suction connections is imperative in order to ensure cavitation-free operation and optimal suction conditions.

If only one connection is used, a safety margin of one meter has to be added to the required NPSH.

The inlet pressure on the suction side must not exceed 29 PSI (2 bar).

Level of noise emission

Emission sound pressure level: ≤ 91 dB(A)

Fields of application

The fields of application of these pump types correspond to the specifications in the assembly instructions Giant Industries, Inc.

Ambient conditions

Ambient temperature: $41^{\circ}\text{F} < T_{\text{Amb.}} < 86^{\circ}\text{F}$

Ambient temperature: $5^{\circ}\text{C} < T_{\text{Amb.}} < 30^{\circ}\text{C}$

Oil filling

- Filling quantity: **1.7 gallon (6.5 l)**
- Quality: Industrial gear oil ISO VG 220 or automotive gear oil **SAE 90 GL4 (Giant's p/n 01154)**
- Intervals: first oil change after **50 operating hours** then every 1000 operating hours, but at the latest after **12 months**

Installation/ Putting into Operation

Shaft protector

When the pump is in operation, the open shaft end must be covered up by shaft protector (21), the driven shaft side and coupling by a contact-protector and the plunger room by cover (30).

Direction of pump rotation

Set the direction of rotation of the drive unit according to the direction of rotation arrow on the crankcase.

Suction line filter

Recommended mesh size 150 μm .

Operation

For informations, see assembly instructions **Giant Industries, Inc.**

GP7150A Horsepower Requirements						
RPM	GPM	800 PSI	1000 PSI	1300 PSI	1500 PSI	1900 PSI
300	23.4	13.4	16.7	21.7	25.1	31.8
400	31.2	17.8	22.3	29.0	33.4	42.3
500	38.9	22.2	27.8	36.1	41.7	52.8
600	46.7	26.7	33.4	43.4	50.0	63.4
700	54.5	31.1	38.9	50.6	58.4	74.0

GP7155A Horsepower Requirements					
RPM	GPM	800 PSI	1000 PSI	1300 PSI	1500 PSI
479	45.0	25.7	32.1	41.8	48.2
531	49.9	28.5	35.6	46.3	53.5
585	55.0	31.4	39.3	51.1	58.9
638	60.0	34.3	42.9	55.7	64.3
700	65.8	37.6	47.0	61.1	70.5

GP7150A and GP7155A Repair Instructions

Maintenance and Servicing

For the type of threadlocker used and the required tightening torques, observe the table in the exploded view.

Special tools required

The following special tools are required for assembly:

- Extraction tool (part no. 07662)
- Pull-out tool size 5
- Snap-ring tongs

Suction and Discharge Valves

Screw off plugs (58).

Take out tension spring (57).

Remove the complete valve (51, 52) and valve holder (55) using either a valve tool or an M16 hexagon screw.

To dismantle valves:

Screw valve seat (51E, 52E) out of spring tension cap (51A, 52A).

Check sealing surfaces and replace worn parts.

Check O-rings and support rings.

Tighten plugs (58) to the required torque.



If worn, the discharge valve seat (52E) can be turned 180° round and refitted.

Seals and Plunger

Loosen nuts (49A) and remove pump head.

Separate plunger connection (36A) from crosshead (25) by means of an open-end wrench (size 36).

Pull seal sleeves (39) out of their fittings in the crankcase.

Take seal case (38) out of seal sleeve (39).

For P71/145 and P71/200 remove tension spring (45).

Examine plunger parts (36A-36D), seals (42,39A) and O-rings. When replacing plunger pipe (36B), tighten tension screws (36C) to the required torque.

Replace worn parts; grease seals with Silicone before installing.



Don't loosen the 3 plunger connections (36A) before the valve casing has been removed. Otherwise the tension screw (36C) could hit against the Spring Tension Cap (51A) when the pump is being turned.

Seal life can be increased if the pretensioning allows for a little leakage.

This assists lubrication and keeps the seals cool.

It is therefore not necessary to replace seals before the leakage becomes too heavy and causes output and operating pressure to drop.

When reassembling, tighten plunger screws (36A) to the required torque.

Mounting Valve Casing:

Check O-rings on seal case (38).

Clean surfaces of seal sleeves in gear box and sealing surfaces of valve casing.

Push valve casing carefully onto O-rings of seal case and centring studs (50A).

Tighten nuts (49A) to the required torque.

If required, supplementary assembly instructions can be requested from the manufacturer Giant Industries.

Spare Parts

When **ordering spare parts**, please specify **pump type, pump number, year of manufacture, and parts code number**.

This data can be found on the nameplate and in the spare parts list

Malfunctions / Remedy

For informations, see assembly instructions Giant Industries.

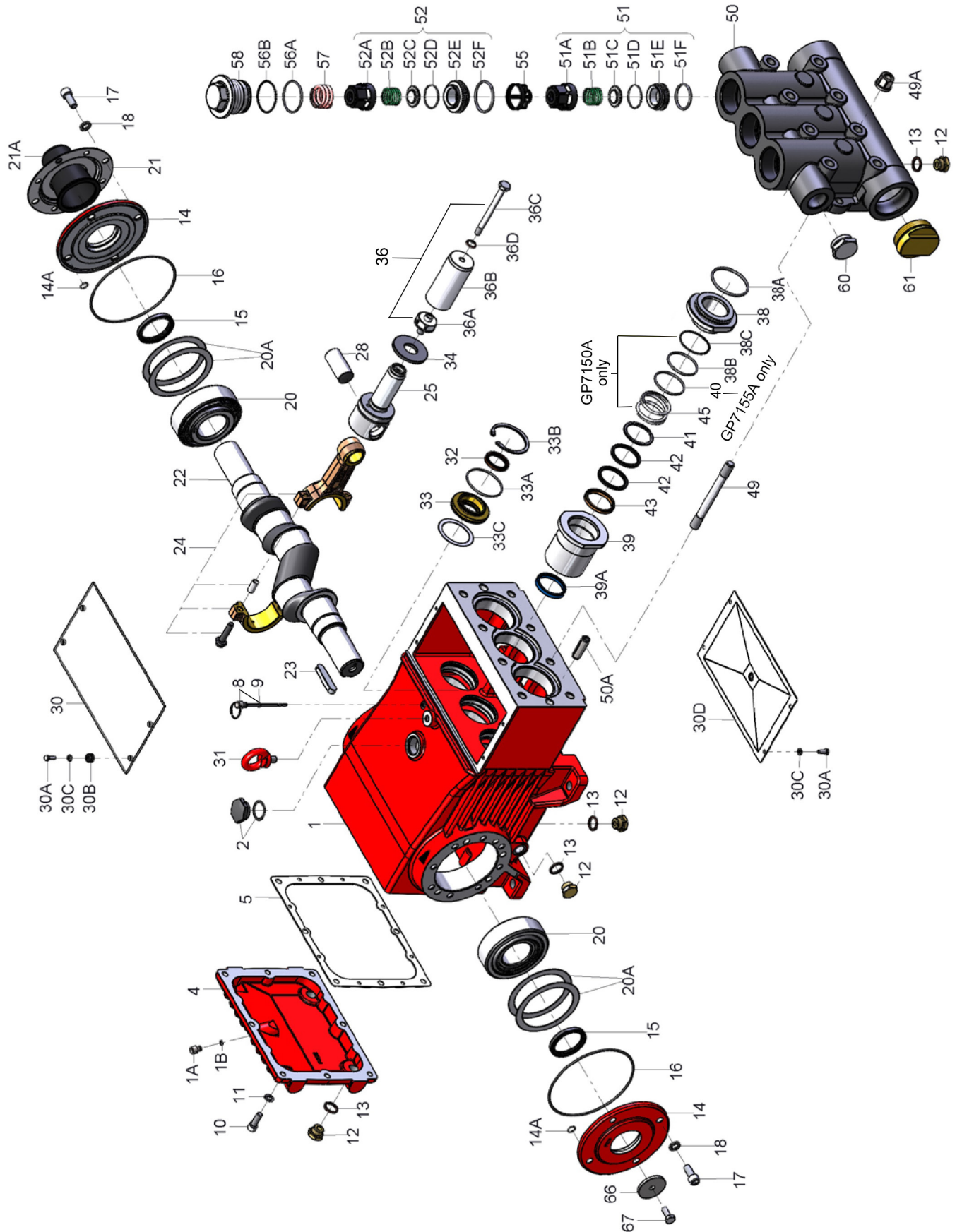
Materials Used

Valve Casing:	Aluminum Bronze
G-versions:	Spheroidal Cast Iron
Plunger:	Solid ceramic
Valves:	High-Grade Stainless Steel
Seals:	Nitrile with fabric reinforcing
O-rings:	Nitrile

Paint

The pump drive is painted in RAL 3001 as standard.

Exploded View - GP7150A and GP7155A



PARTS LIST - GP7150A and GP7155A

<u>ITEM</u>	<u>PART</u>	<u>DESCRIPTION</u>	<u>QTY.</u>	<u>ITEM</u>	<u>PART</u>	<u>DESCRIPTION</u>	<u>QTY.</u>
1	05769	Crankcase	1	38	13155	Seal Case, GP7155A	3
1A	05525	Head for Oil Dipstick	1	38A	13156	O-Ring for 38	3
1B	01009	O-Ring	1	38B	06258	O-Ring for 38, GP7150A	3
2	13000	Oil Filler Plug Assembly	1	38B	07721	O-Ring for 38, GP7155A	3
4	07601	Crankcase Cover	1	38C	07635	Support Ring for O-Ring, GP7150A only	3
5	05798	Gasket, Crankcase Cover	1	39	07795	Seal Sleeve, GP7150A	3
8	07603	Oil Dip Stick Assembly	1	39	13157	Seal Sleeve, GP7155A	3
9	01009	O-Ring, Dip Stick	1	39A	07796	Grooved Ring, GP7150A	3
10	22706	Hexagon Screw	8	39A	07723	Grooved Ring, GP7155A	3
11	06725	Spring Washer	8	40	07797	Support Disc, GP7155 only	3
12	07109	Drain Plug	7	41	05318	Support Ring, GP7150A	3
13	07182	Gasket, Drain Plug	7	41	13158	O-Ring, GP7155A	3
14	05770	Bearing Cover	2	42	07638	V-Sleeve, GP7150A	6
14A	12204	O-Ring	8	42	07711	V-Sleeve, GP7155A	6
15	05771	Radial Shaft Seal	2	43	07639	Pressure Ring, GP7150A	3
16	05772	O-Ring	2	43	07712	Pressure Ring, GP7155A	3
17	05642	Inner Hexagon Screw	8	45	07636	Tension Spring (GP7150A only)	3
18	05039	Spring Washer	8	49	13159	Stud Bolt	8
20	05773	Taper Roller Bearing	2	49A	13160	Hexagon Nut	8
20A	05774	Fitting Disc (Shim)	1-8	50	07790	Valve Casing	1
21	05645	Holder for Shaft Protector	1	50A	13162	Cylinder Stud	2
21A	05646	Shaft Protector	1	51	05594	Inlet Valve Assembly (51A-51F)	3
22	05775	Crankshaft	1	51A	05595	Spring Tension Cap	3
23	07614	Key	1	51B	05450	Valve Spring	3
24	05777	Connecting Rod Assembly	3	51C	05247	Valve Plate	3
25	05778	Crosshead Assembly	3	51D	05596	O-Ring	3
28	05779	Crosshead Pin	3	51E	05597	Inlet Valve Seat	3
30	07619	Cover Plate	1	51F	05166	O-Ring	3
30A	07225-0100	Hexagon Screw	8	52	05600	Discharge Valve Assembly (52A-52F)	3
30B	13136	Grommet	4	52A	05595	Spring Tension Cap	3
30C	05053	Disc	8	52B	05450	Valve Spring	3
30D	13154	Cover Plate	1	52C	05247	Valve Plate	3
31	07623	Eye Bolt	1	52D	05596	O-Ring	3
32	07624	Radial Shaft Seal	3	52E	05598	Discharge Valve Seat	3
33	07626	Seal Retainer	3	52F	05599	O-Ring	3
33A	07627	O-Ring	3	55	05647	Valve Retainer	3
33B	07628	Circlip	3	56A	07658	O-Ring	3
33C	07249	Fitting Disc	3	56B	07635	Support Ring	3
34	13137	Oil Scraper	3	57	13173	Tension Spring	3
36	07630	Plunger Pipe Assembly (36A-D), GP7150A	3	58	06682	Plug, M64 x 2	3
36	07706	Plunger Pipe Assembly (36A-D), GP7155A	3	60	12251	Plug, 1-1/4" NPT	1
36A	07667	Plunger Connection	3	61	05170	Plug, 2-1/2" NPT	1
36B	07793	Plunger Pipe, GP7150A	3	66	13362	Disc For Crankshaft	1
36B	07666	Plunger Pipe, GP7155A	3	67	13358	Hexagon Screw	1
36C	07664	Tension Screw	3		07662	Valve Tool (Not Shown)	1
36D	07665	Copper Ring	3				
38	07794	Seal Case, GP7150A	3				

REPAIR KITS - GP7150A and GP7155A

Plunger Packing Kit - GP7150A

09526

Item	Part #	Description	Qty.
38A	13156	O-Ring	3
38B	06258	O-Ring	3
38C	07635	Support Ring	3
39A	07796	Grooved Ring	3
42	07638	V-Sleeve	6

Plunger Packing Kit - GP7155A

09220

Item	Part #	Description	Qty.
38A	13156	O-Ring	3
38B	07721	O-Ring	3
39A	07723	Grooved Ring	3
41	13158	Support Ring	3
42	07711	V-Sleeve	6

Oil Seal Kit

09221

Item	Part #	Description	Qty.
32	07624	Radial Shaft Seal	3
33A	07627	O-Ring	3

Inlet Valve Kit

09659

Item	Part #	Description	Qty.
51	05594	Inlet Valve Assembly	1
56A	07658	O-Ring	1
56B	07635	Support Ring	1

Large Discharge Valve Kit

09660

Item	Part #	Description	Qty.
52	05600	Discharge Valve Assembly	1
55	05647	Valve Spacer	1
56A	07658	O-Ring	1
56B	07635	Support Ring	1

Small Discharge Valve Kit *

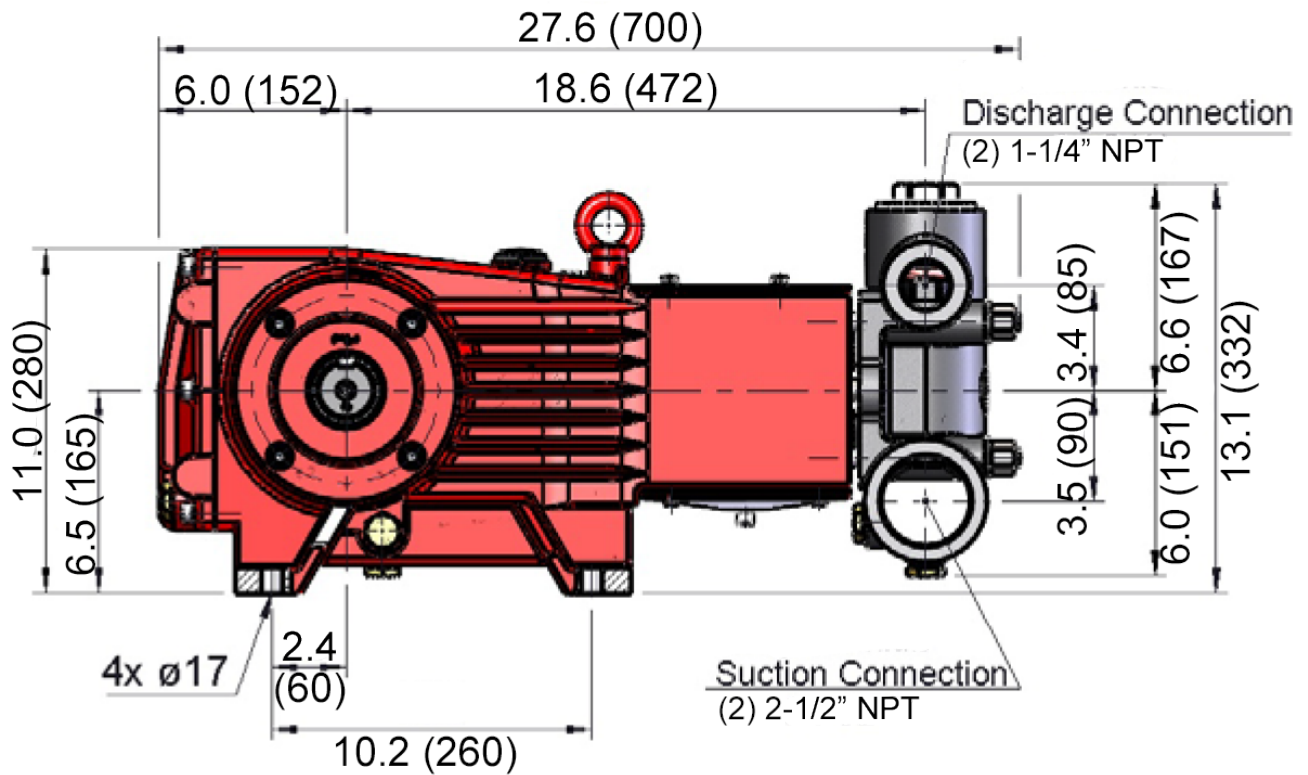
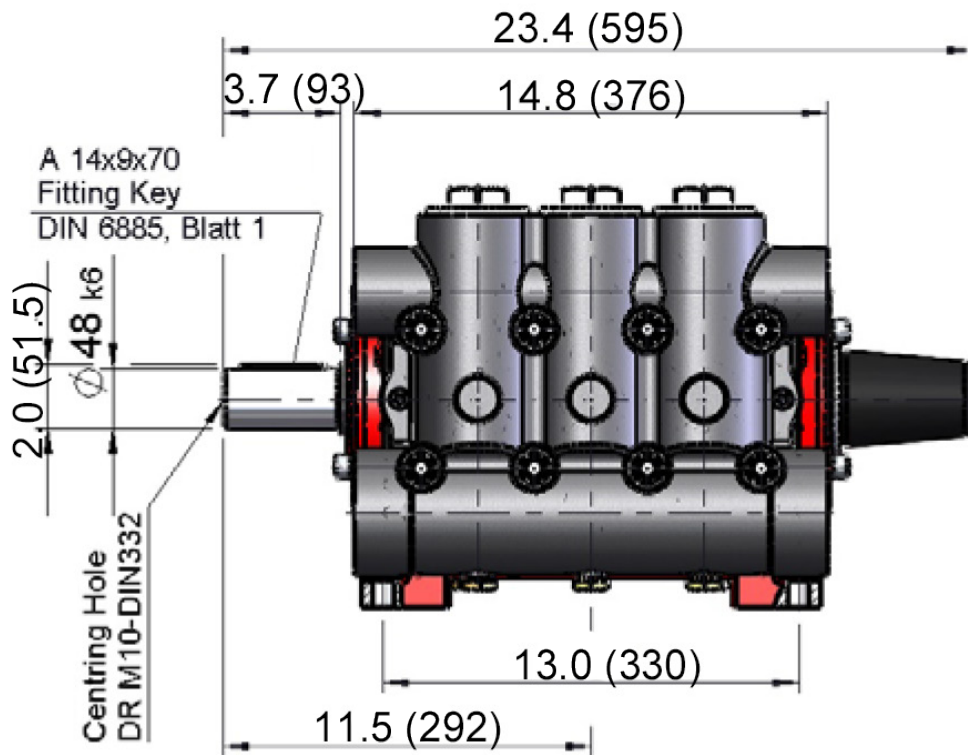
09661

Item	Part #	Description	Qty.
51B	05450	Valve Spring	1
51C	05247	Valve Plate	1
51D	05596	O-Ring	1
52F	05599	O-Ring	1
56A	07658	O-Ring	1
56B	07635	Support Ring	1

* The discharge valve seat (item 52E) can be flipped over and used. If it is damaged on both sides, order kit # 09660.

TORQUE SPECIFICATIONS - GP7150A and GP7155A			
Position	Thread	Lubrication Info	Torque Specifications
1		Molycote/Cu-Paste	
10	M10		33 ft.-lbs. (45 Nm)
12	1/2" BSP		59 ft.-lbs. (80 Nm)
15		Loctite 403	
17	M12		64 ft.-lbs. (87 Nm)
24	M10		30 ft.-lbs. (40 Nm)
30A			89 in.-lbs. (10 Nm)
32		Loctite 403	
36A			33 ft.-lbs. (45 Nm)
36C	M10	Loctite 243	30 ft.-lbs. (40 Nm)
39		Anti Sieze 350 (crankcase side)	
49	M16	Loctite 648 (crankcase side)	
49A	M16		133 ft.-lbs. (180 Nm)
58	M64 x 2		107 ft.-lbs. (145 Nm)

GP7150A and GP7155A Dimensions - Inches (mm)



GIANT INDUSTRIES LIMITED WARRANTY

Giant Industries, Inc. pumps and accessories are warranted by the manufacturer to be free from defects in workmanship and material as follows:

1. Five (5) years from the date of shipment for all pumps used in portable pressure washers with NON-SALINE, clean water applications.
2. Two (2) years from the date of shipment for Giant pumps used in car wash applications.
3. One (1) year from the date of shipment for all other Giant industrial and consumer pumps.
4. Six (6) months from the date of shipment for all rebuilt pumps
5. Ninety (90) days from the date of shipment for all Giant accessories.

This warranty is limited to repair or replacement of pumps and accessories of which the manufacturer's evaluation shows were defective at the time of shipment by the manufacturer. The following items are NOT covered or will void the warranty:

1. Defects caused by negligence or fault of the buyer or third party.
2. Normal wear and tear to standard wear parts.
3. Use of repair parts other than those manufactured or authorized by Giant.
4. Improper use of the product as a component part.
5. Changes or modifications made by the customer or third party.
6. The operation of pumps and or accessories exceeding the specifications set forth in the Operations Manuals provided by Giant Industries, Inc.

Liability under this warranty is on all non-wear parts and limited to the replacement or repair of those products returned freight prepaid to Giant Industries which are deemed to be defective due to workmanship or failure of material. A Returned Goods Authorization (R.G.A.) number and completed warranty evaluation form is required prior to the return to Giant Industries of all products under warranty consideration. Call (419)-531-4600 or fax (419)-531-6836 to obtain an R.G.A. number.

Repair or replacement of defective products as provided is the sole and exclusive remedy provided hereunder and the MANUFACTURER SHALL NOT BE LIABLE FOR FURTHER LOSS, DAMAGES, OR EXPENSES, INCLUDING INCIDENTAL AND CONSEQUENTIAL DAMAGES DIRECTLY OR INDIRECTLY ARISING FROM THE SALE OR USE OF THIS PRODUCT.

THE LIMITED WARRANTY SET FORTH HEREIN IS IN LIEU OF ALL OTHER WARRANTIES OR REPRESENTATION, EXPRESS OR IMPLIED, INCLUDING WITHOUT LIMITATION ANY WARRANTIES OR MERCHANTABILITY OR FITNESS FOR A PARTICULAR PURPOSE AND ALL SUCH WARRANTIES ARE HEREBY DISCLAIMED AND EXCLUDED BY THE MANUFACTURER.



WARNING: This product might contain a chemical known to the State of California to cause cancer, and birth defects or other reproductive harm.
For more information go to www.P65Warnings.ca.gov



GIANT INDUSTRIES, INC.

900 N. Westwood Ave.

Toledo, Ohio 43607

Phone; (419) 531-4600 FAX (419) 531-6836

© Copyright 2025 Giant Industries, Inc.

www.giantpumps.com