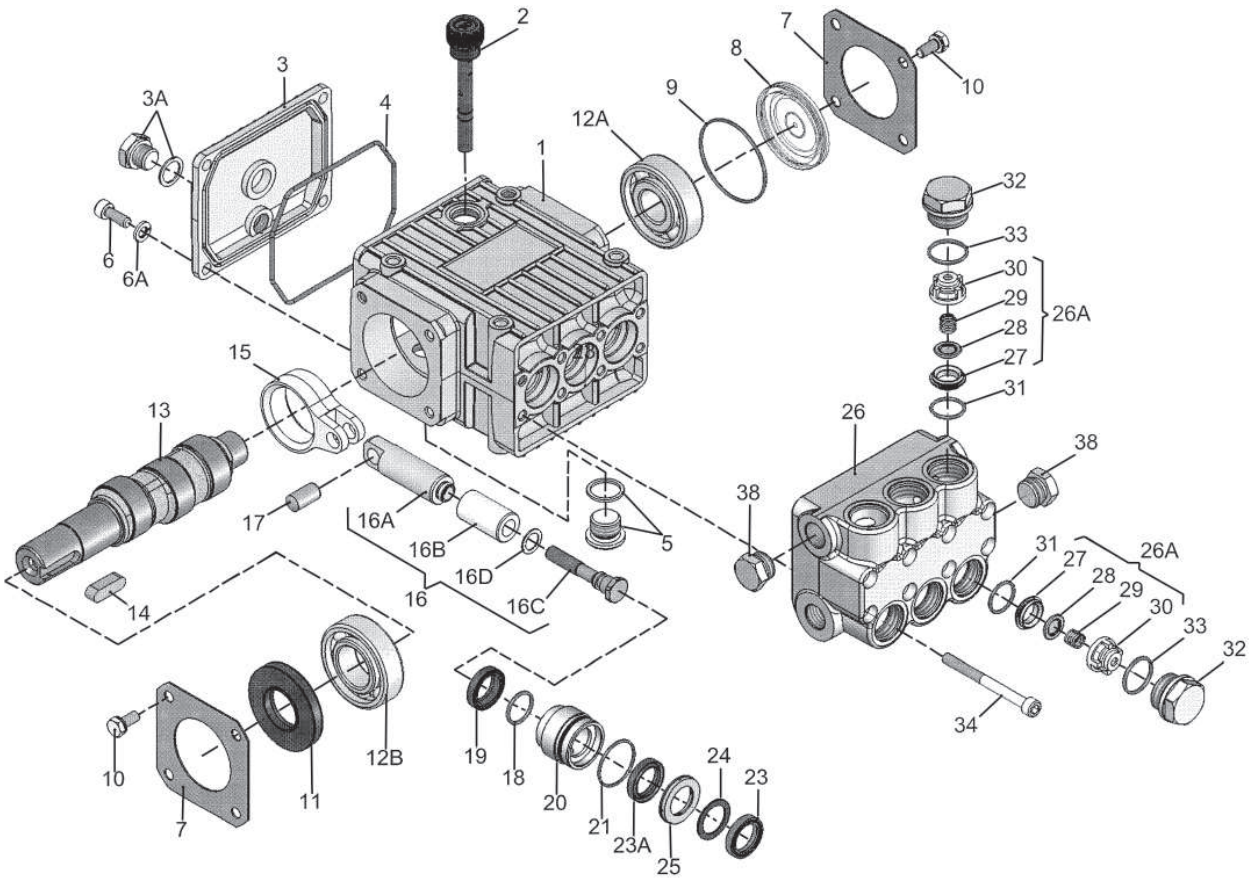


CP218, CP220 & CP230 Pump - Exploded View



CP218, CP220 & CP230 Pumps Spare Parts

<u>Item</u>	<u>Part No.</u>	<u>Description</u>	<u>Qty.</u>	<u>Item</u>	<u>Part No.</u>	<u>Description</u>	<u>Qty.</u>
1	CP08300A	Crankcase	1	16C	CP08456	Tension Screw	3
2	CP08301	Oil Dipstick with O-Ring	1	16D	CP07676	Copper Gasket	3
3	CP08302A	Crankcase Cover, Short	1	17	CP08442	Wrist Pin	3
3A	CP07190	Drain Plug & Gasket	1	18	CP07770	O-Ring	3
4	CP08005	O-Ring	1	19	CP08356	Oil Seal	3
5	CP08185	Oil Drain Plug w/gasket	1	20	CP08444	Seal Case	3
6	CP07188	Screw, Crankcase Cover	4	21*	CP06815	O-Ring	3
6A	CP07223-0100	Spring Washer	4	23	CP08087	V-Sleeve	3
7	CP08303	Bearing Cover I	2	23A	CP08087-0020	V-Sleeve, Teflon	3
8	CP08490	Oil Sight Glass	1	24	CP07904	Pressure Ring	3
9	CP08492	O-Ring	1	25	CP08445	Weep Return Ring	3
10	CP07225	Screw with Lock Washer	8	26	CP08446	Valve Casing	1
11	CP01166	Radial Shaft Seal	1	26A	CP04273	Valve Assembly (27-30)	6
12A	CP08020	Ball Bearing	1	27	CP07849-0100	Valve Seat	6
12B	CP01020	Ball Bearing	1	28	CP06809	Valve Plate	6
13	CP08440	Crankshaft (CP218)	1	29	CP06816	Valve Spring	6
13	CP08467	Crankshaft (CP220)	1	30	CP07907	Valve Spring Retainer	6
13	CP06694	Crankshaft (CP230)	1	31*	CP06817	O-Ring	6
14	CP06207	Fitting Key	1	32	CP07928	Valve Plug	6
15	CP08333	Connecting Rod	3	33*	CP06818	O-Ring	6
16	CP08469	Plunger, Complete	3	34	CP08316	Hex Head Cap Screw	8
16A	CP08468	Plunger Base	3	38	CP13338	Plug, 3/8" NPT	1
16B	CP08455	Plunger Pipe	3				

* These EPDM (Buna) o-rings must not come into contact with mineral oil or mineral grease. Use silicone grease only.

CP218, CP220 & CP230 Pump Repair Kits

Valve Assembly Kit

Part # CP09556-0123

<u>Item #</u>	<u>Part #</u>	<u>Description</u>	<u>Qty.</u>
26A	CP04273	Valve Assembly, Complete	6
31	CP06817	O-Ring	6
33	CP06818	O-Ring	6

Oil Seal Kit - Part # CP09144

<u>Item #</u>	<u>Part #</u>	<u>Description</u>	<u>Qty.</u>
19	CP08356	Oil Seal	3

Plunger Packing Kit

Part # CP09554-0123

<u>Item #</u>	<u>Part #</u>	<u>Description</u>	<u>Qty.</u>
21	CP06815	O-Ring	3
23	CP08087	V-Sleeve, weep	3
23A	CP08087-0020	V-Sleeve, brown	3
24	CP07904	Pressure Ring	3

CP218, CP220 & CP230 Pump Torque Specifications

<u>Position</u>	<u>Item#</u>	<u>Description</u>	<u>Torque Amount</u>
16C	CP08456-0100	Tension Screw, Plunger	199 in.-lbs. (22.5 Nm)
32	CP07928-0100	Valve Plug	55 ft.-lbs. (75 Nm)
34	CP08316-0100	Hex Head Cap Screw, Valve Casing	105 in.-lbs. (12 Nm)

Pump Mounting Selection Guide

Bushings

01074 - 24 mm Tapered H Bushing

Pulley & Sheaves

01061 - 7.75" Cast Iron -1 gr. - AB Section

01062 - 7.75" Cast Iron -2 gr. - AB Section

Rails

01160/01161- Plated Steel Channel Rails
(L=5.75"x W=1.00"x h=2.50")

Preventative Maintenance Check List & Recommended Spare Parts List

Check	Daily	Weekly	50 Hrs.	Every 500 Hrs	Every 1500 Hrs	Every 3000 Hrs
Oil Level/Quality	X					
Oil Leaks	X					
Water Leaks	X					
Belts, Pulley		X				
Plumbing		X				
Recommended Spare Parts						
Oil Change See page 2			X	X		
Plunger Packing Kit (1 kit/pump) See above					X	
Oil Seal Kit (1 kit/pump) See above					X	
Valve Repair Kit (1 kit/pump) See above						X