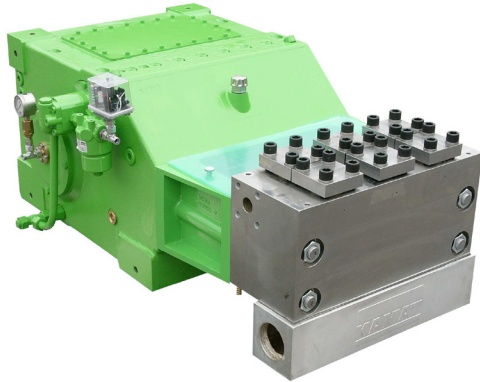


K 35000 - 3G Triplex Plunger Pump



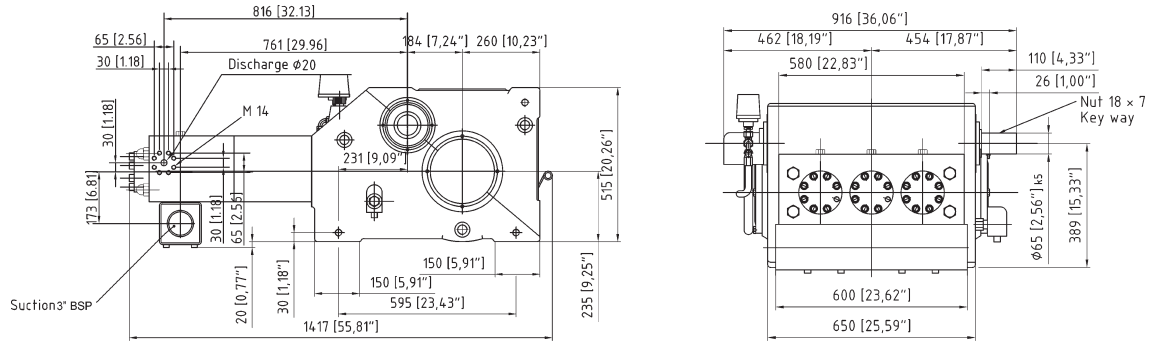
Type	Rated Speed 440 RPM		Pressure at specific power inputs								Pump Head Style										
	FLOW		375 Hp		280 kW		422 Hp		315 kW		442 Hp		330 kW		469 Hp		350 kW		A	M	MC
	GPM	L/min	PSI	Bar	PSI	Bar	PSI	Bar	PSI	Bar	PSI	Bar	PSI	Bar	PSI	Bar					
K 35018 - 3G	12.4	47	44950	3100	50750	3500	-	-	-	-	X										
K 35020 - 3G	15.3	58	36250	2500	40600	2800	42775	2950	45675	3150	X										
K 35022 - 3G	18.5	70	30088	2075	33858	2335	35380	2440	36250	2500	X										
K 35024 - 3G	21.9	83	25375	1750	28282	1950	29725	2050	31900	2200	X										
K 35026 - 3G	25.9	98	21460	1480	24215	1670	25375	1750	27260	1880	X										
K 35028 - 3G	30.1	114	18560	1280	20880	1440	22330	1540	23490	1620	X										
K 35030 - 3G	34.6	131	16675	1150	18850	1300	19575	1350	20880	1440	X										
K 35032 - 3G	39.4	149	14790	1020	16675	1150	17400	1200	18343	1265	X										
K 35036 - 3G	49.7	188	11818	815	13123	905	13775	950	14500	1000	X										
K 35040 - 3G	61.3	232	9643	665	10948	755	11310	780	11745	810	X										
K 35045 - 3G	77.7	294	7613	525	8628	595	9063	625	9280	640	X										
K 35050 - 3G	95.9	363	5873	405	6598	455	6960	480	7323	505	X	X									
K 35055 - 3G	116.0	439	4858	335	5438	375	5728	395	6090	420		X	X								
K 35060 - 3G	138.2	523	4060	280	4568	315	4785	330	5075	350		X	X								
K 35065 - 3G	162.0	613	3480	240	3915	270	4133	285	4350	300		X	X								
K 35070 - 3G	187.8	711	2973	205	3335	230	3553	245	3770	260		X	X								
K 35075 - 3G	215.6	816	2610	180	2900	200	3045	210	3263	225			X								
K 35085 - 3G	277.1	1049	2030	140	2320	160	2393	165	2538	175			X								
K 35095 - 3G	346.1	1310	1595	110	1813	125	1885	130	2030	140			X								

Subject to change without notice

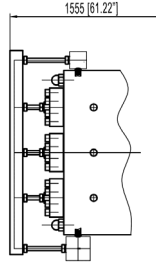
- ◆ Flow rate is based on 100% volumetric efficiency and 68° F(20° C) ambient temperature.
- ◆ Depending on fluid medium, a minimum inlet pressure is required.
- ◆ Depending on rod loading, a minimum crankshaft RPM is required.
- ◆ Dynamically balanced
- ◆ Gear with forece-fed lubrication and oil cooler
- ◆ Standard Gear Ratios: i = 3.39, 4.05, 4.76 and 5.25
- ◆ Weight: 2997 lbs (1360 kg)
- ◆ API 674 specifications available upon request.
- ◆ Contact your local distributor or Giant Industries for use with special mediums. i.e. seawater, glycol, methanol, oils, etc.

Pump Dimensions mm(in)

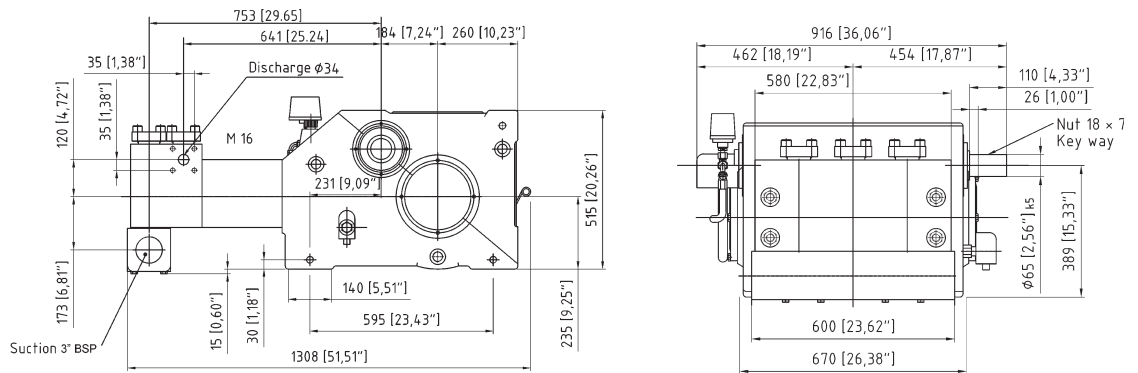
High Pressure Head A



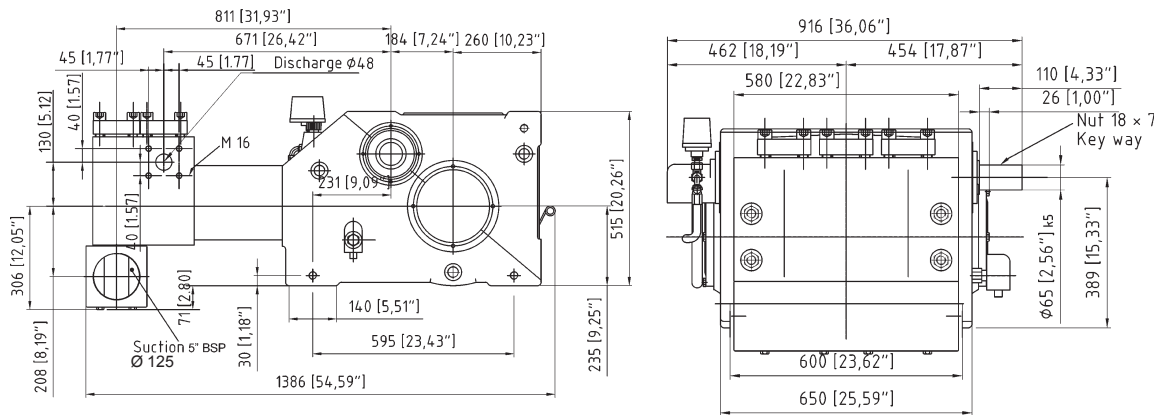
High Pressure Head 29,000 PSI (2000 Bar) and above



Compact Head M



Compact Head MC



GIANT

Performance Under Pressure

GIANT INDUSTRIES, INC.

900 N. Westwood Ave.

Toledo, Ohio 43607

Phone: (419) 531-4600

Fax: (419) 531-6836

www.giantpumps.com

© Copyright 2013 Giant Industries, Inc.

